

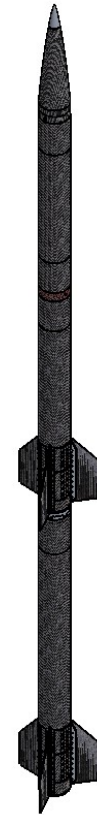
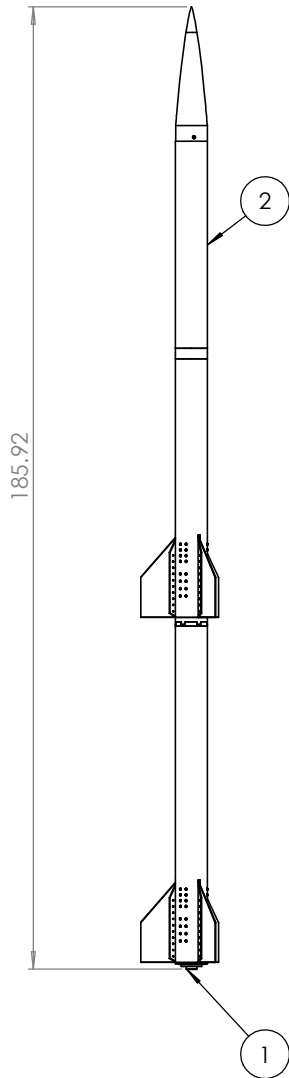
4

3

2

1

ITEM NO.	PART NUMBER	DESCRIPTION	QTY.
1	Booster		1
2	Second Stage		1



PROPRIETARY AND CONFIDENTIAL
 THE INFORMATION CONTAINED IN THIS DRAWING IS THE SOLE PROPERTY OF <INSERT COMPANY NAME HERE>. ANY REPRODUCTION IN PART OR AS A WHOLE WITHOUT THE WRITTEN PERMISSION OF <INSERT COMPANY NAME HERE> IS PROHIBITED.

		UNLESS OTHERWISE SPECIFIED:	NAME	DATE		
		DIMENSIONS ARE IN INCHES	DRAWN		TITLE: Full Vehicle	
		TOLERANCES:	CHECKED			
		FRACTIONAL ±	ENG APPR.			
		ANGULAR: MACH ± BEND ±	MFG APPR.			
		TWO PLACE DECIMAL ±	Q.A.			
		THREE PLACE DECIMAL ±	COMMENTS:		SIZE DWG. NO. REV	
		INTERPRET GEOMETRIC TOLERANCING PER:			B 1 1	
		MATERIAL			SCALE: 1:48 WEIGHT: SHEET 1 OF 1	
		Combination				
		FINISH				
		Smooth				
NEXT ASSY	USED ON	APPLICATION				
		DO NOT SCALE DRAWING				

4

3

2

1

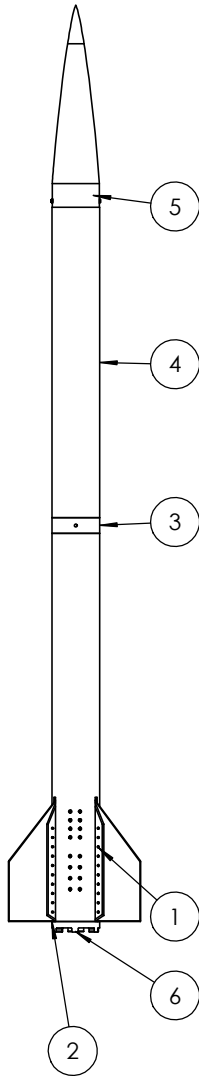
4

3

2

1

ITEM NO.	PART NUMBER	DESCRIPTION	QTY.
1	Main_vehicle_canister_rev_3		1
2	Carbon Body Tube		1
3	Avionics Bay Assembly 2nd Stage		1
4	Payload Carbon Body Tube		1
5	Rocket_NoseCone		1
6	Stripped Motor		1
7	92095A214	M5 Button Head Hex Drive Screw	48
8	94645A102	M5 High-Strength Steel Nylon-Insert Locknut	44



PROPRIETARY AND CONFIDENTIAL
 THE INFORMATION CONTAINED IN THIS DRAWING IS THE SOLE PROPERTY OF <INSERT COMPANY NAME HERE>. ANY REPRODUCTION IN PART OR AS A WHOLE WITHOUT THE WRITTEN PERMISSION OF <INSERT COMPANY NAME HERE> IS PROHIBITED.

UNLESS OTHERWISE SPECIFIED:		NAME	DATE
DIMENSIONS ARE IN INCHES		DRAWN	
TOLERANCES:		CHECKED	
FRACTIONAL: ±		ENG APPR.	
ANGULAR: MACH ± BEND ±		MFG APPR.	
TWO PLACE DECIMAL ±		Q.A.	
THREE PLACE DECIMAL ±		COMMENTS:	
INTERPRET GEOMETRIC TOLERANCING PER:			
MATERIAL		Combination	
FINISH		Smooth	
NEXT ASSY	USED ON		
APPLICATION		DO NOT SCALE DRAWING	

TITLE: Second Stage		
SIZE B	DWG. NO. 2	REV
SCALE: 1:24 WEIGHT:		SHEET 1 OF 1

4

3

2

1

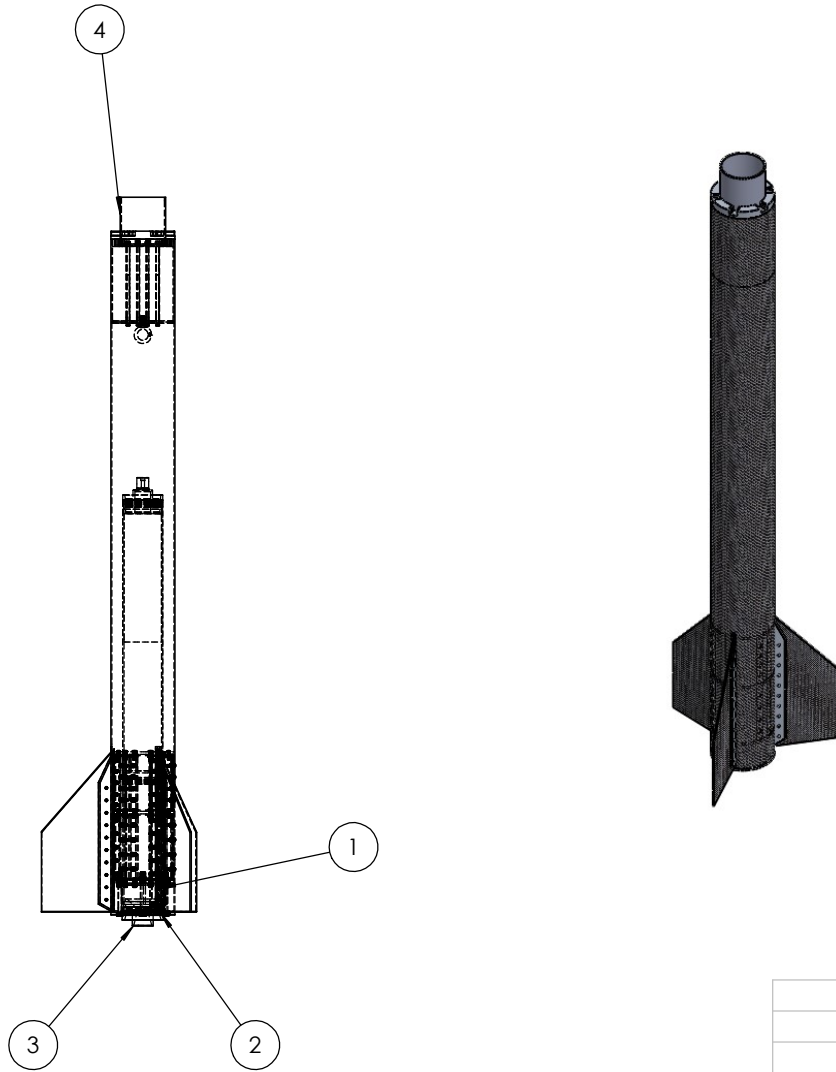
4

3

2

1

ITEM NO.	PART NUMBER	DESCRIPTION	QTY.
1	Booster_canister_rev_3		1
2	Booster Carbon Body Tube		1
3	Stripped Motor		1
4	Separation_System_Assembly_Rev7		1
5	92095A214	M5 Button Head Hex Drive Screw	48
6	94645A102	M5 High-Strength Steel Nylon-Insert Locknut	48



PROPRIETARY AND CONFIDENTIAL
 THE INFORMATION CONTAINED IN THIS DRAWING IS THE SOLE PROPERTY OF <INSERT COMPANY NAME HERE>. ANY REPRODUCTION IN PART OR AS A WHOLE WITHOUT THE WRITTEN PERMISSION OF <INSERT COMPANY NAME HERE> IS PROHIBITED.

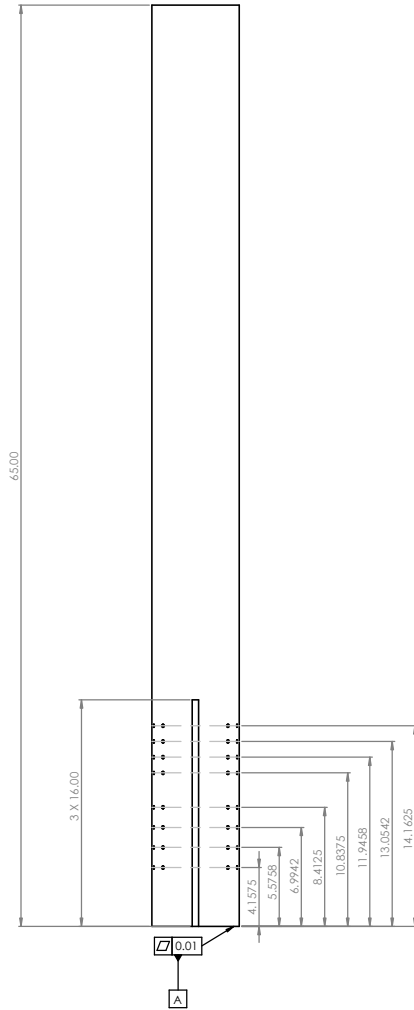
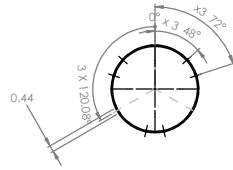
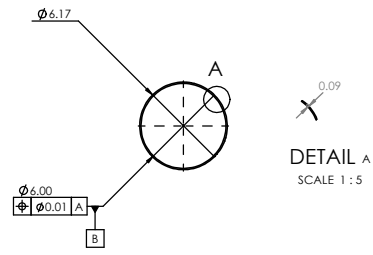
		UNLESS OTHERWISE SPECIFIED:	NAME	DATE		
		DIMENSIONS ARE IN INCHES	DRAWN		TITLE: Booster	
		TOLERANCES:	CHECKED			
		FRACTIONAL: ±	ENG APPR.			
		ANGULAR: MACH ± BEND ±	MFG APPR.			
		TWO PLACE DECIMAL ±	Q.A.		SIZE	DWG. NO.
		THREE PLACE DECIMAL ±	COMMENTS:		B	3
		INTERPRET GEOMETRIC TOLERANCING PER:			SCALE: 1:16	WEIGHT:
		MATERIAL				SHEET 1 OF 1
		Combination				
		FINISH				
NEXT ASSY	USED ON	APPLICATION				
		DO NOT SCALE DRAWING				

4

3

2

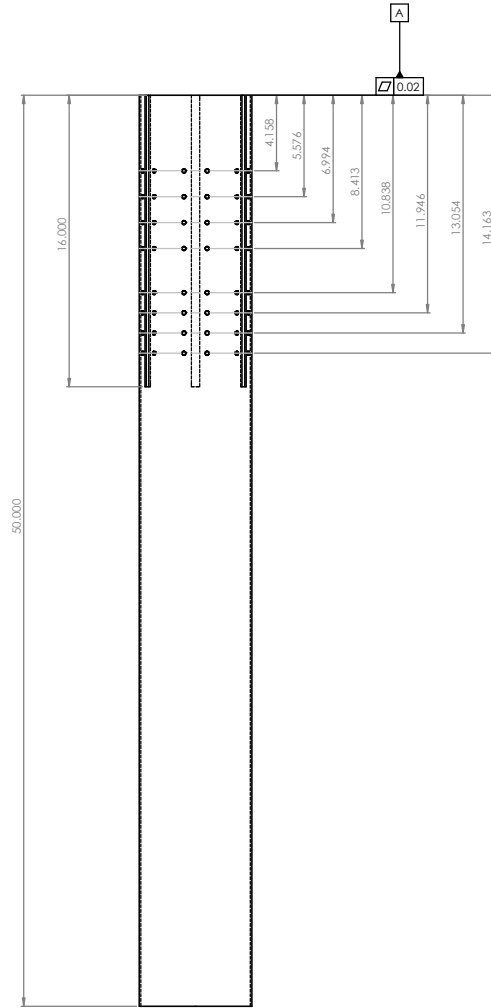
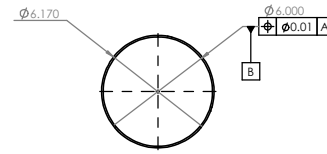
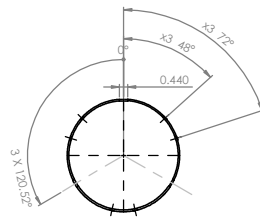
1



MATERIALS: COMPOSITE (CARBON FIBER)

- NOTES:
- SANDING REQUIRED FOR SMOOTH FINISH
 - 6-7 LAYERS MINIMUM FOR DURABILITY
 - All holes are M5 Screw Clearance

UNLESS OTHERWISE SPECIFIED:	FINISH:	TOLERANCES AND SURFACE FINISH:	DO NOT SCALE DRAWING	REVISION:
SMOOTH				
DATE:	SCALE:		TITLE:	
11/23/16			BOOSTER CARBON BODY TUBE	
11/23/16			4	A1
11/23/16				

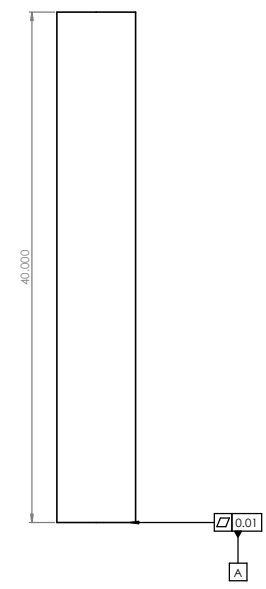
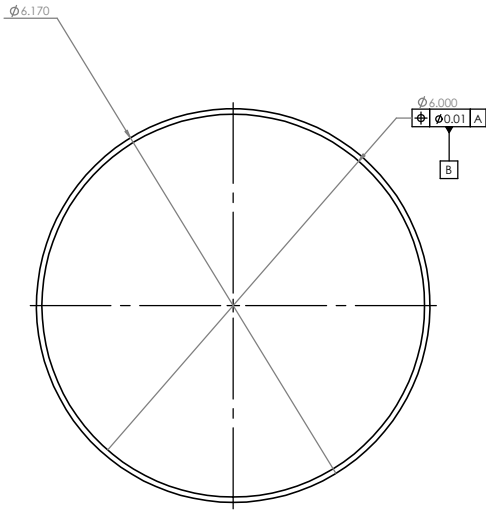


MATERIALS: COMPOSITE (CARBON FIBER)

NOTES:

- SAND FOR SMOOTH FINISH
- 6-7 LAYERS FOR DURABILITY
- All Holes Are M5 Screw Clearance

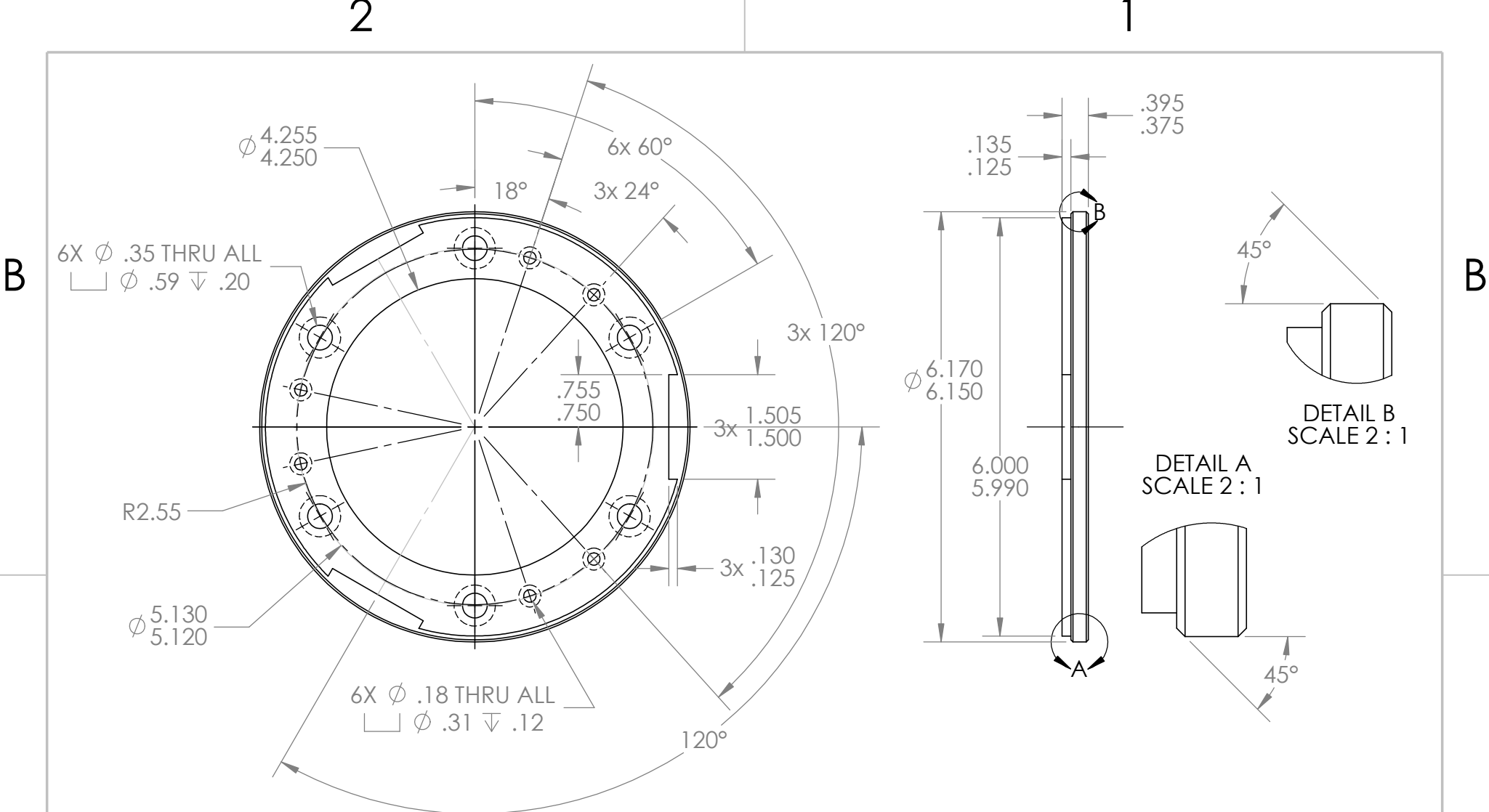
UNLESS OTHERWISE SPECIFIED: DIMENSIONS ARE IN MILLIMETERS SURFACE FINISH SHOWN TOLERANCES: FRACTIONS DECIMALS		FINISH: SMOOTH, SANDING REQUIRED	CEILING AND FLOOR GROUP BOUGS	DO NOT SCALE DRAWING	REVISION:
DATE	ISSUED	SCHEMATIC	DATE	TITLE:	
11/23/24	11/23/24		11/23/24	2ND STAGE BODY TUBE	
11/23/24				5	
11/23/24				A1	
DATE	ISSUED	SCHEMATIC	DATE	DWG NO.	
11/23/24	11/23/24		11/23/24	COMPOSITE (CARBON FIBER)	
11/23/24				SCALE: 1:1	
11/23/24				WEIGHT:	



MATERIALS: COMPOSITE (CARBON FIBER)

- NOTES:
- SAND FOR SMOOTH FINISH
 - 6-7 LAYERS FOR DURABILITY

UNLESS OTHERWISE SPECIFIED: DIMENSIONS ARE IN MILLIMETERS SURFACE FINISH IS UNLESS NOTED TOLERANCES ARE:		FINISH: SMOOTH, SANDING IF NECESSARY	DESIGN AND DRAWING GROUP	DO NOT SCALE DRAWING	REVISION:
DATE:	SCALE:	DATE:	SCALE:	TITLE: PAYLOAD BODY TUBE	
DESIGNER:	DATE:	DATE:	DATE:	6	
CHECKED:	DATE:	DATE:	DATE:	A1	
APPROVED:	DATE:	DATE:	DATE:	COMPOSITE (CARBON FIBER)	
DATE:	DATE:	DATE:	DATE:	DRAWING	
DATE:	DATE:	DATE:	DATE:	WEIGHT	
DATE:	DATE:	DATE:	DATE:	SCALE IS	
DATE:	DATE:	DATE:	DATE:	SHEET 1 OF 1	



A

PROPRIETARY AND CONFIDENTIAL
 THE INFORMATION CONTAINED IN THIS DRAWING IS THE SOLE PROPERTY OF Northrop Grumman. ANY REPRODUCTION IN PART OR AS A WHOLE WITHOUT THE WRITTEN PERMISSION OF Northrop Grumman IS PROHIBITED.

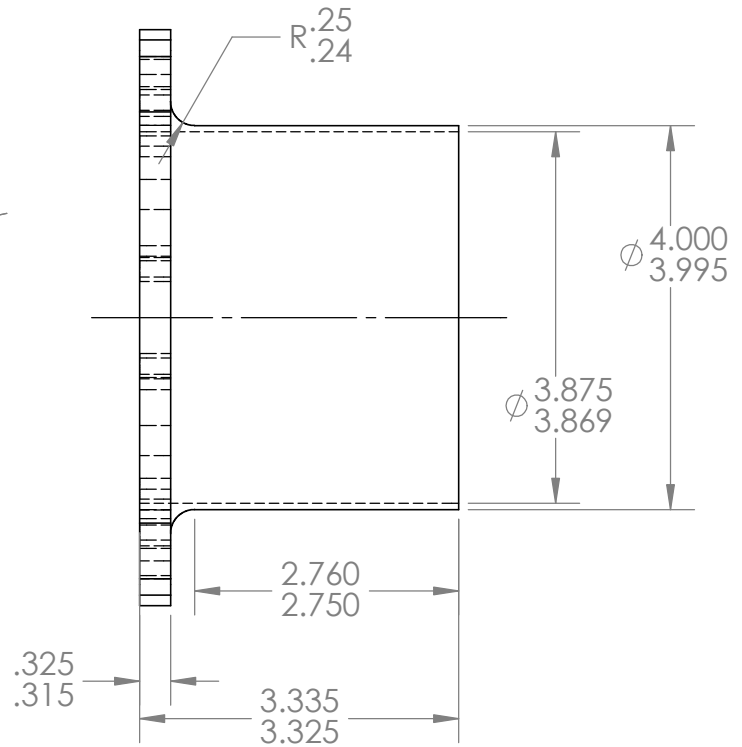
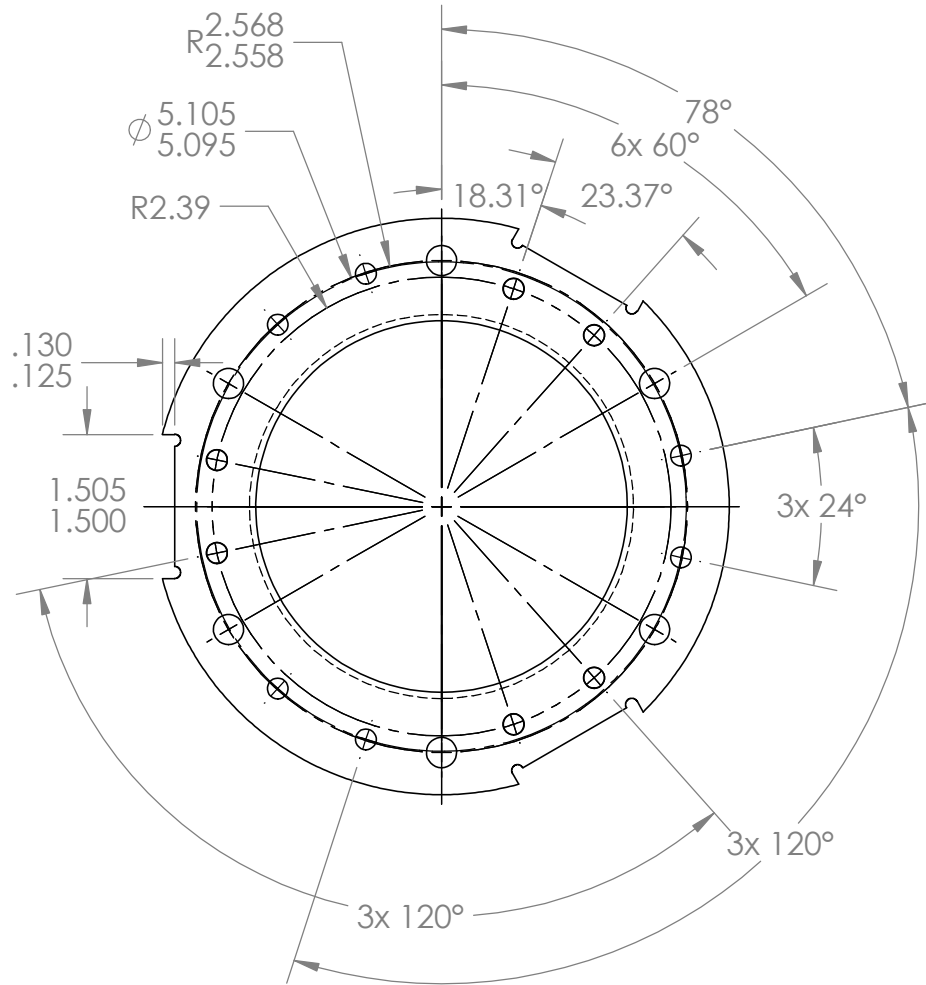
		UNLESS OTHERWISE SPECIFIED:		NAME	DATE
		DIMENSIONS ARE IN INCHES	DRAWN	kaq39	2/26/24
		TOLERANCES:	CHECKED	kaq39	2/27/24
		FRACTIONAL \pm	ENG APPR.		
		ANGULAR: MACH \pm BEND \pm	MFG APPR.		
		TWO PLACE DECIMAL \pm	Q.A.		
		THREE PLACE DECIMAL \pm	COMMENTS:		
		INTERPRET GEOMETRIC TOLERANCING PER:			
		MATERIAL			
		Aluminium			
		FINISH			
NEXT ASSY	USED ON				
APPLICATION		DO NOT SCALE DRAWING			

TITLE:
2nd Stage End Cap

SIZE	DWG. NO.	REV
A	7	2
SCALE: 1:2	WEIGHT:	SHEET 1 OF 1

B

A



B

A

PROPRIETARY AND CONFIDENTIAL
 THE INFORMATION CONTAINED IN THIS DRAWING IS THE SOLE PROPERTY OF Northrop Grumman. ANY REPRODUCTION IN PART OR AS A WHOLE WITHOUT THE WRITTEN PERMISSION OF Northrop Grumman IS PROHIBITED.

		UNLESS OTHERWISE SPECIFIED:		NAME	DATE
		DIMENSIONS ARE IN INCHES	DRAWN	kaq39	4/26/24
		TOLERANCES:	CHECKED	kaq39	4/26/24
		FRACTIONAL ±	ENG APPR.		
		ANGULAR: MACH ± BEND ±	MFG APPR.		
		TWO PLACE DECIMAL ±	Q.A.		
		THREE PLACE DECIMAL ±	COMMENTS:		
		INTERPRET GEOMETRIC TOLERANCING PER:			
		MATERIAL			
		Aluminium			
		FINISH			
NEXT ASSY	USED ON				
APPLICATION		DO NOT SCALE DRAWING			

TITLE:
Aft End Centering Ring with Sep Brace

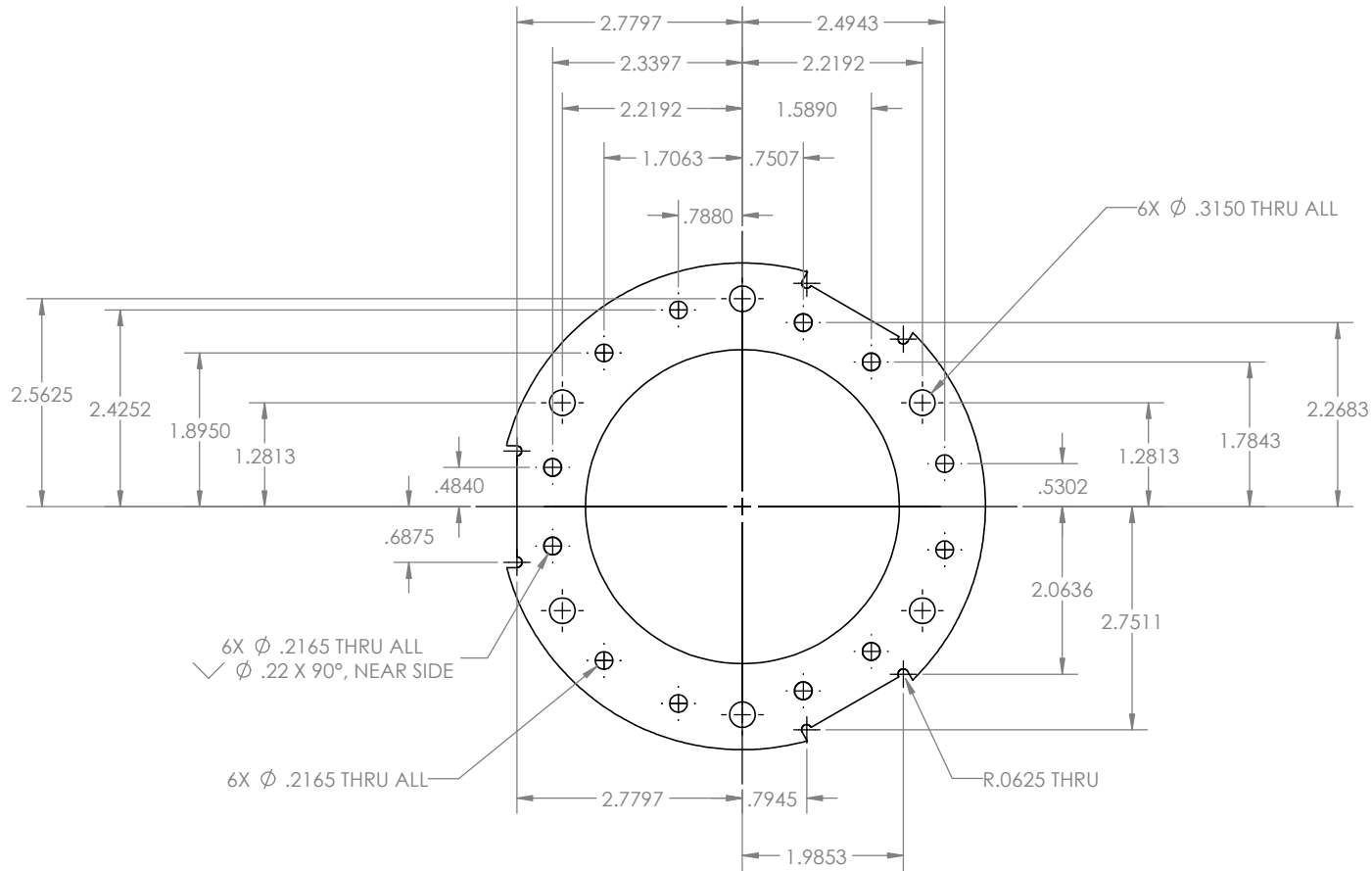
SIZE	DWG. NO.	REV
A	8	1
SCALE: 1:2	WEIGHT:	SHEET 1 OF 2

2

1

1

1



B

B

A

A

PROPRIETARY AND CONFIDENTIAL
 THE INFORMATION CONTAINED IN THIS DRAWING IS THE SOLE PROPERTY OF <INSERT COMPANY NAME HERE>. ANY REPRODUCTION IN PART OR AS A WHOLE WITHOUT THE WRITTEN PERMISSION OF <INSERT COMPANY NAME HERE> IS PROHIBITED.

		UNLESS OTHERWISE SPECIFIED:	NAME	DATE		
		DIMENSIONS ARE IN INCHES	DRAWN		TITLE:	
		TOLERANCES:	CHECKED			
		FRACTIONAL ±	ENG APPR.			
		ANGULAR: MACH ± BEND ±	MFG APPR.			
		TWO PLACE DECIMAL ±	Q.A.		SIZE DWG. NO. REV	
		THREE PLACE DECIMAL ±	COMMENTS:			
		INTERPRET GEOMETRIC TOLERANCING PER:			Aft End Centering Ring with Sep	
		MATERIAL			SCALE: 1:2 WEIGHT: SHEET 2 OF 2	
		FINISH				
NEXT ASSY	USED ON	APPLICATION		DO NOT SCALE DRAWING		

2

1

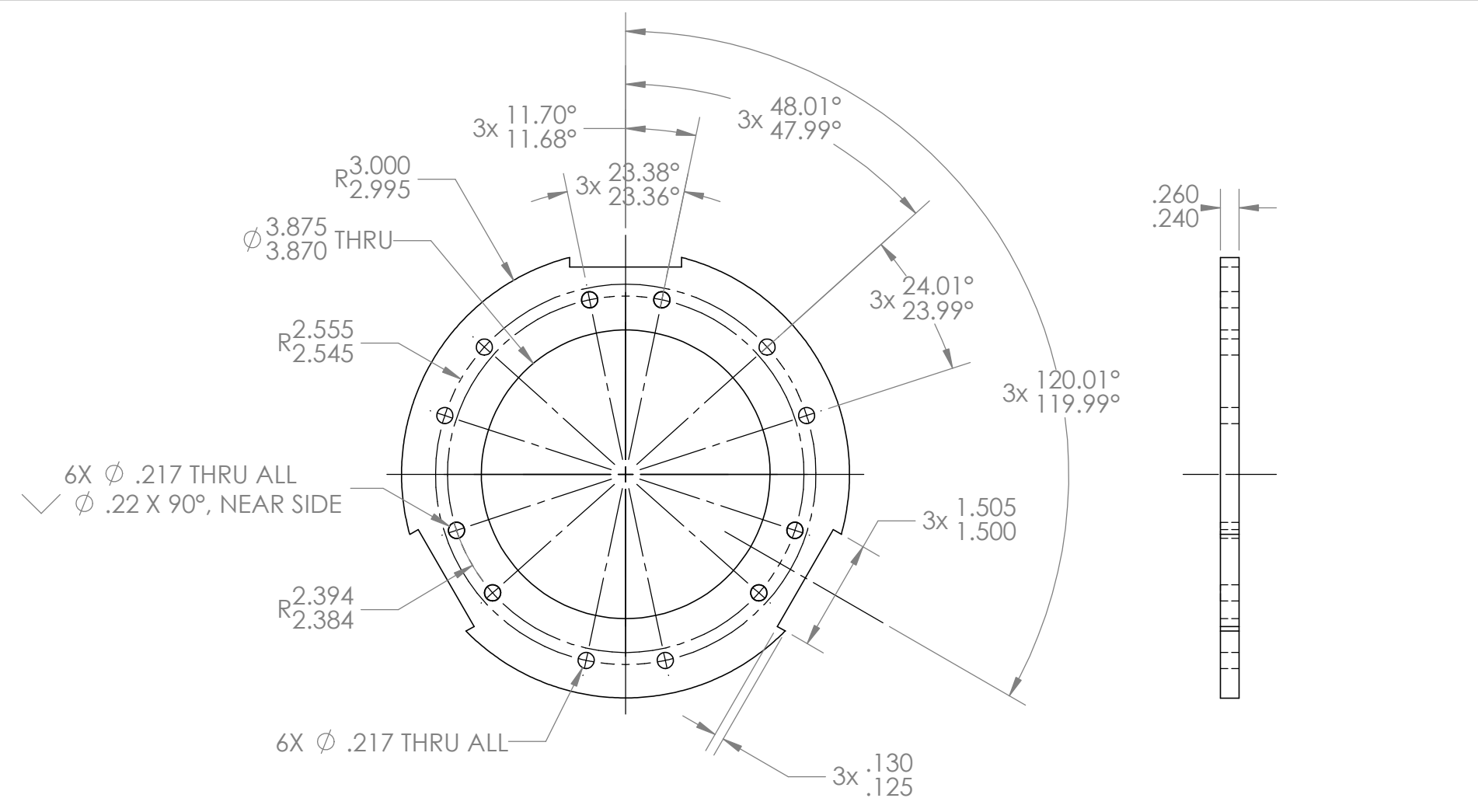
1

1

2 1

B

B



A

A

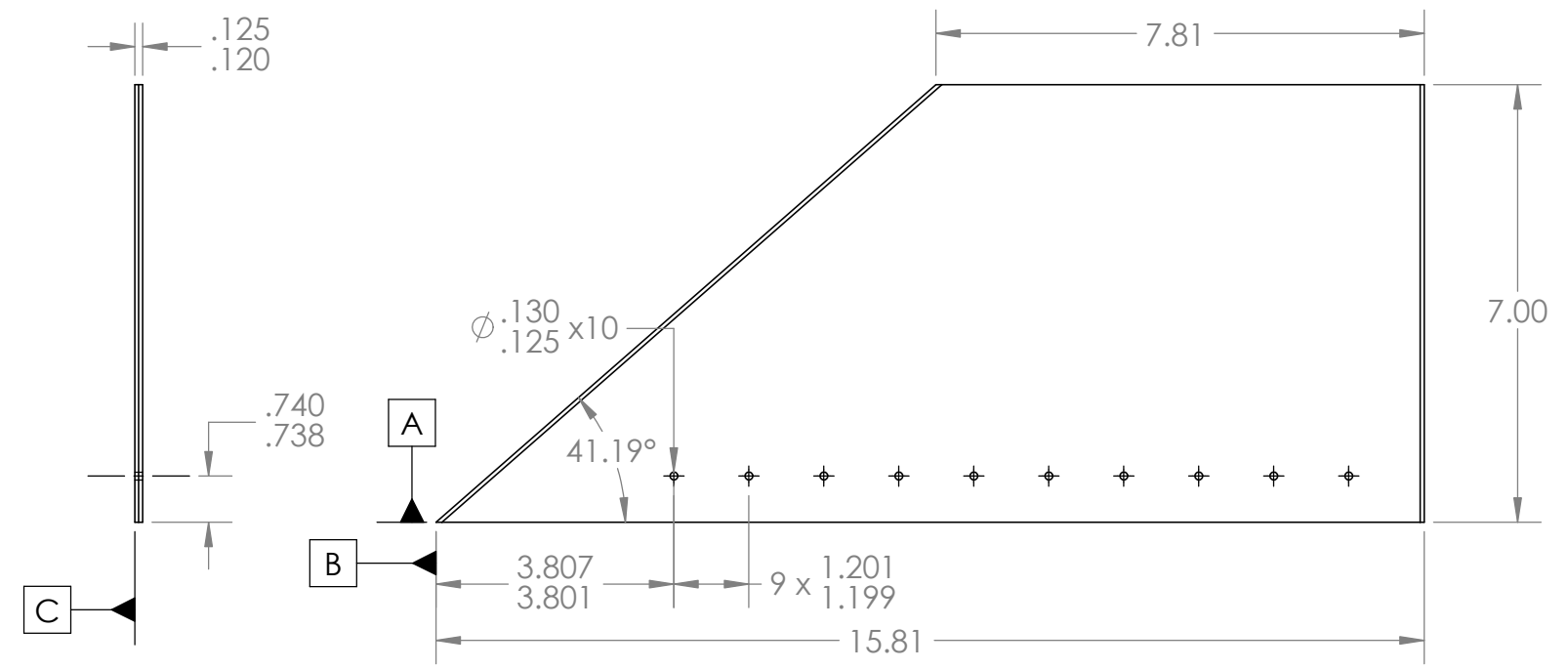
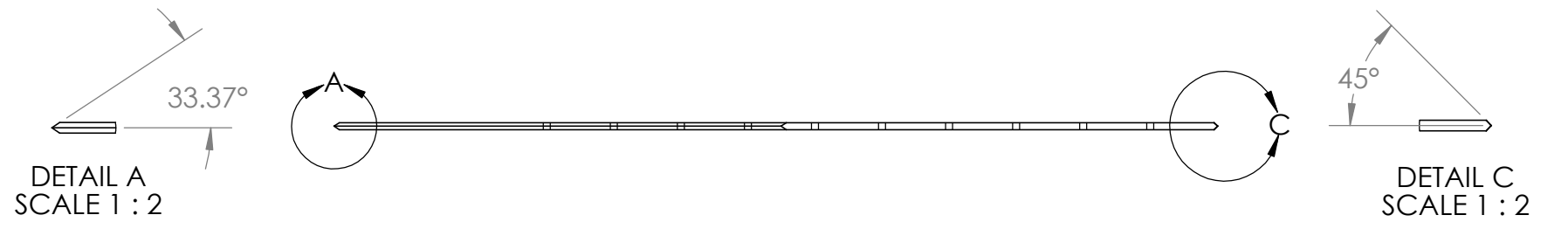
PROPRIETARY AND CONFIDENTIAL
 THE INFORMATION CONTAINED IN THIS DRAWING IS THE SOLE PROPERTY OF Northrop Grumman. ANY REPRODUCTION IN PART OR AS A WHOLE WITHOUT THE WRITTEN PERMISSION OF Northrop Grumman IS PROHIBITED.

		UNLESS OTHERWISE SPECIFIED:	NAME	DATE	
		DIMENSIONS ARE IN INCHES	DRAWN	kaq39	4/26/24
		TOLERANCES:	CHECKED	kaq39	4/27/24
		FRACTIONAL ±	ENG APPR.		
		ANGULAR: MACH ± BEND ±	MFG APPR.		
		TWO PLACE DECIMAL ±	Q.A.		
		THREE PLACE DECIMAL ±	COMMENTS:		
		INTERPRET GEOMETRIC TOLERANCING PER:			
		MATERIAL			
		Aluminium			
		FINISH			
NEXT ASSY	USED ON				
APPLICATION		DO NOT SCALE DRAWING			

TITLE:		
Centering Ring		
SIZE	DWG. NO.	REV
A	9	1
SCALE: 1:2	WEIGHT:	SHEET 1 OF 1

B

B



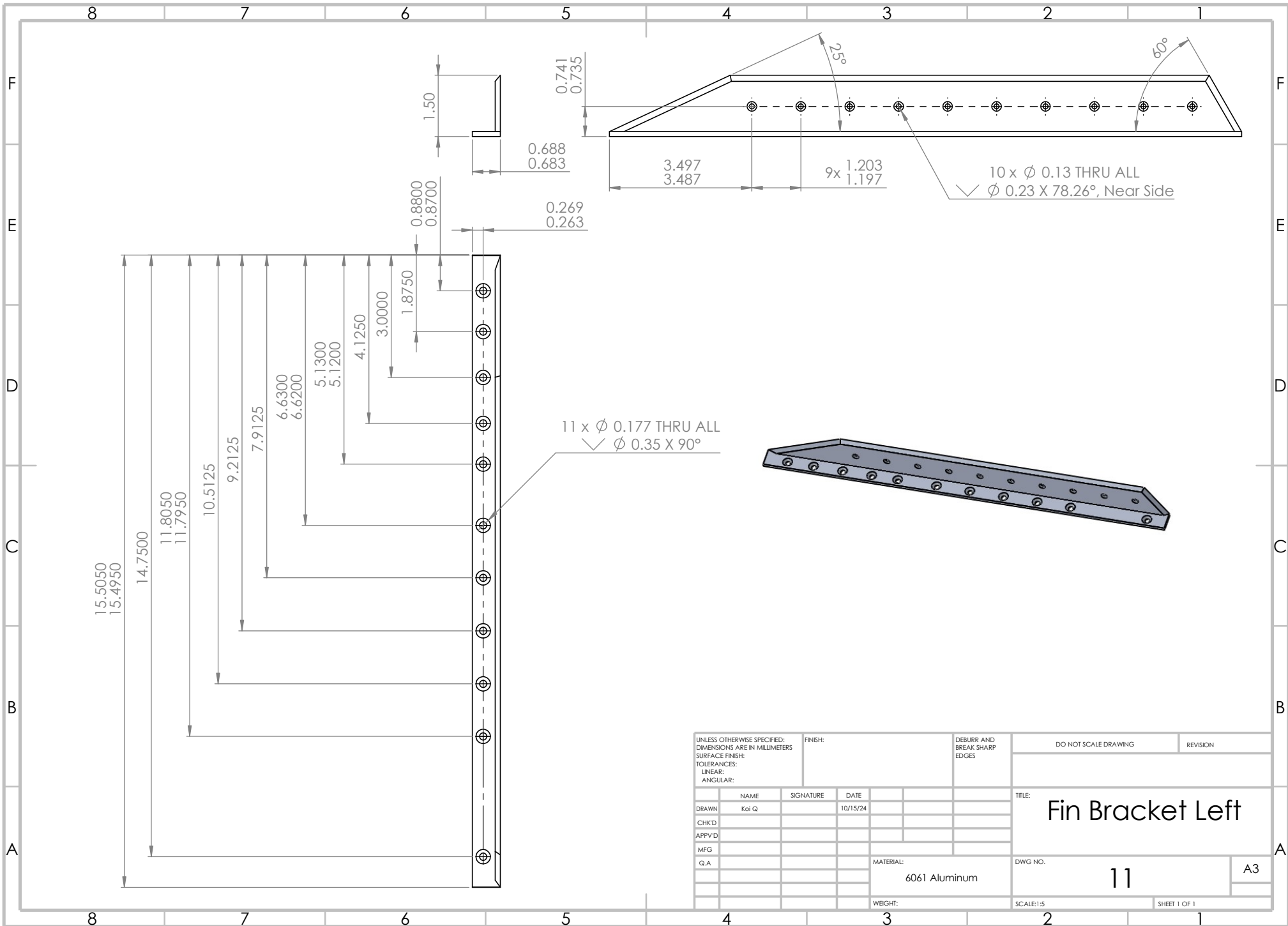
A

A

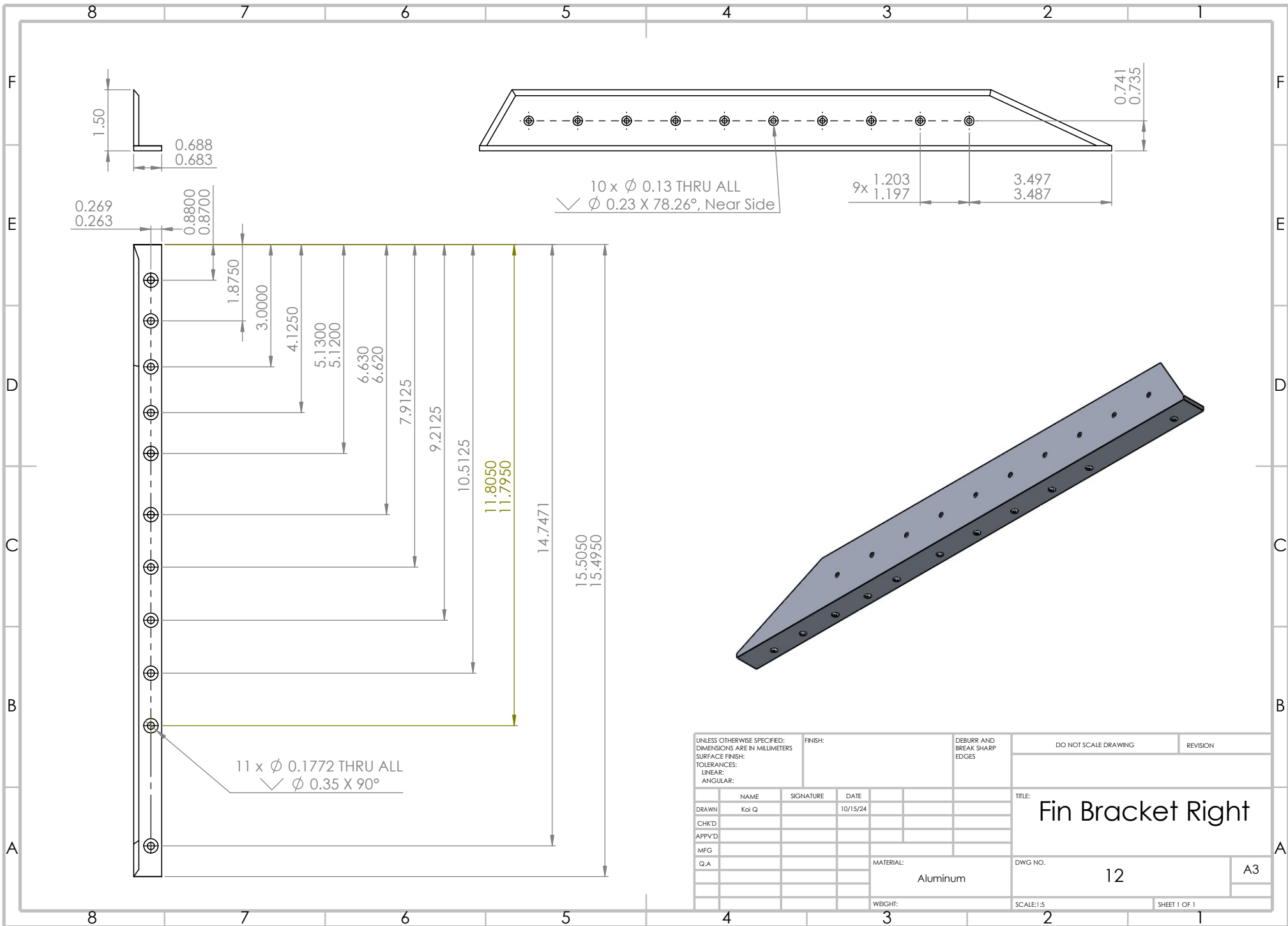
PROPRIETARY AND CONFIDENTIAL
THE INFORMATION CONTAINED IN THIS DRAWING IS THE SOLE PROPERTY OF Northrop Grumman. ANY REPRODUCTION IN PART OR AS A WHOLE WITHOUT THE WRITTEN PERMISSION OF Northrop Grumman IS PROHIBITED.

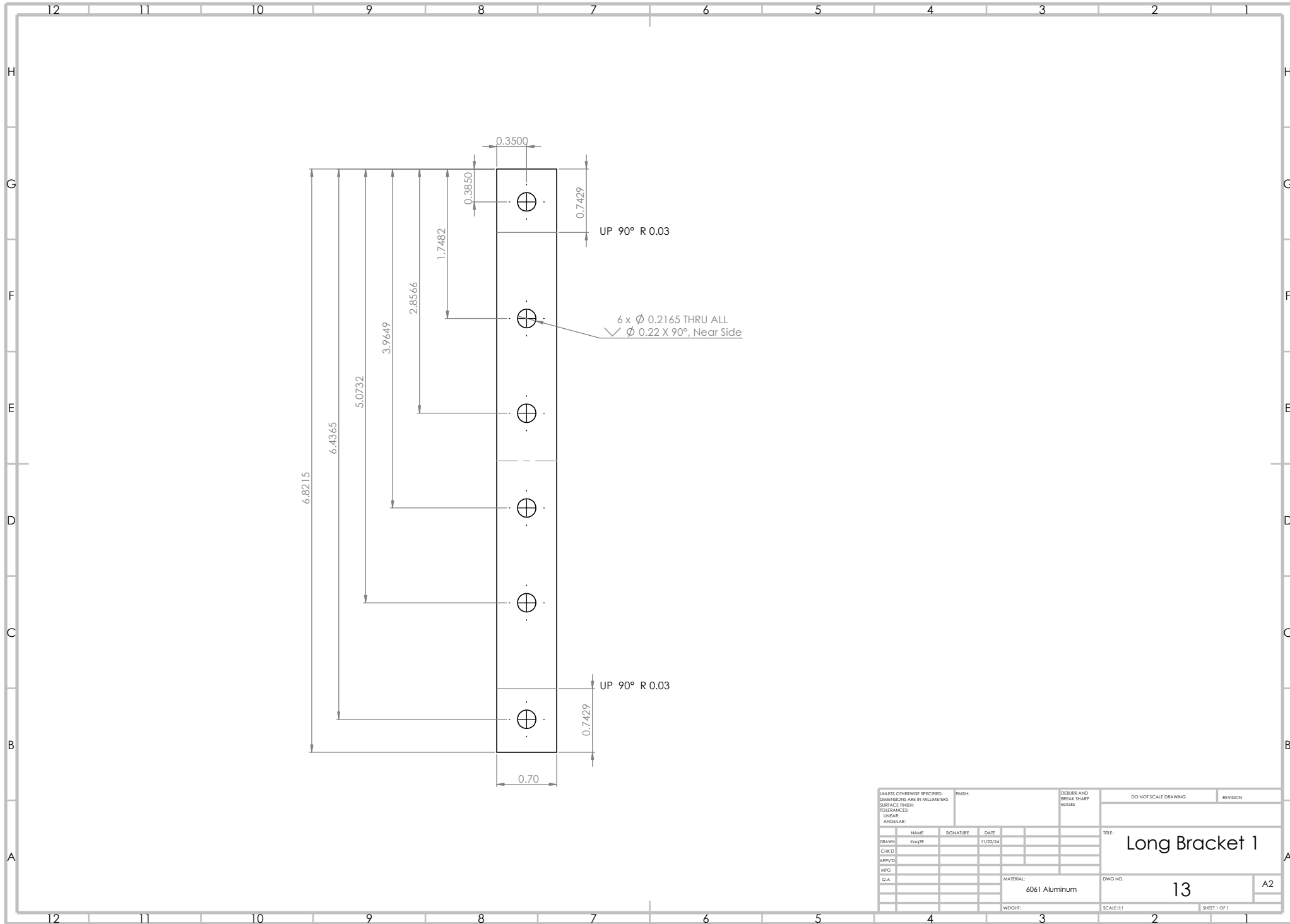
		UNLESS OTHERWISE SPECIFIED:		NAME	DATE
		DIMENSIONS ARE IN INCHES	DRAWN	kaq39	4/26/24
		TOLERANCES:	CHECKED	kaq39	4/27/24
		FRACTIONAL ±	ENG APPR.		
		ANGULAR: MACH ± BEND ±	MFG APPR.		
		TWO PLACE DECIMAL ±	Q.A.		
		THREE PLACE DECIMAL ±	COMMENTS:		
		INTERPRET GEOMETRIC TOLERANCING PER:			
		MATERIAL			
		Carbon Fiber			
		FINISH			
		High Temp. Epoxy			
NEXT ASSY	USED ON				
		APPLICATION			
		DO NOT SCALE DRAWING			

TITLE:			
Fin			
SIZE	DWG. NO.	REV	
A	10	2	
SCALE: 1:5	WEIGHT:	SHEET 1 OF 1	

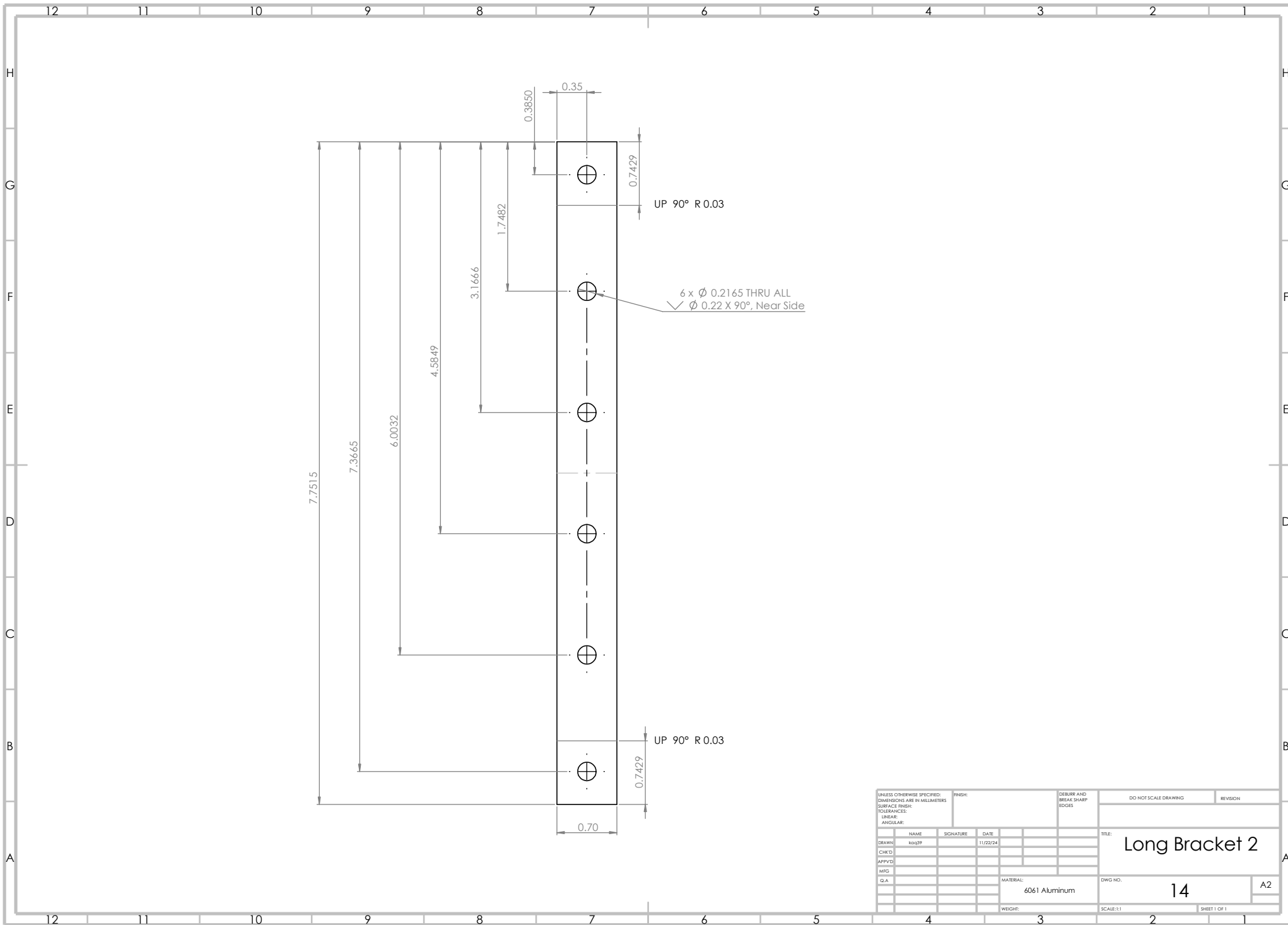


UNLESS OTHERWISE SPECIFIED: DIMENSIONS ARE IN MILLIMETERS SURFACE FINISH: TOLERANCES: LINEAR: ANGULAR:			FINISH:	DEBURR AND BREAK SHARP EDGES	DO NOT SCALE DRAWING	REVISION
DRAWN:	NAME:	SIGNATURE:	DATE:	TITLE:		
CHKD:	Kai Q		10/15/24	Fin Bracket Left		
APPVD:				DWG NO. 11		
MFG:				A3		
Q.A:				MATERIAL: 6061 Aluminum		
				WEIGHT:		
				SCALE: 1:5		
				SHEET 1 OF 1		

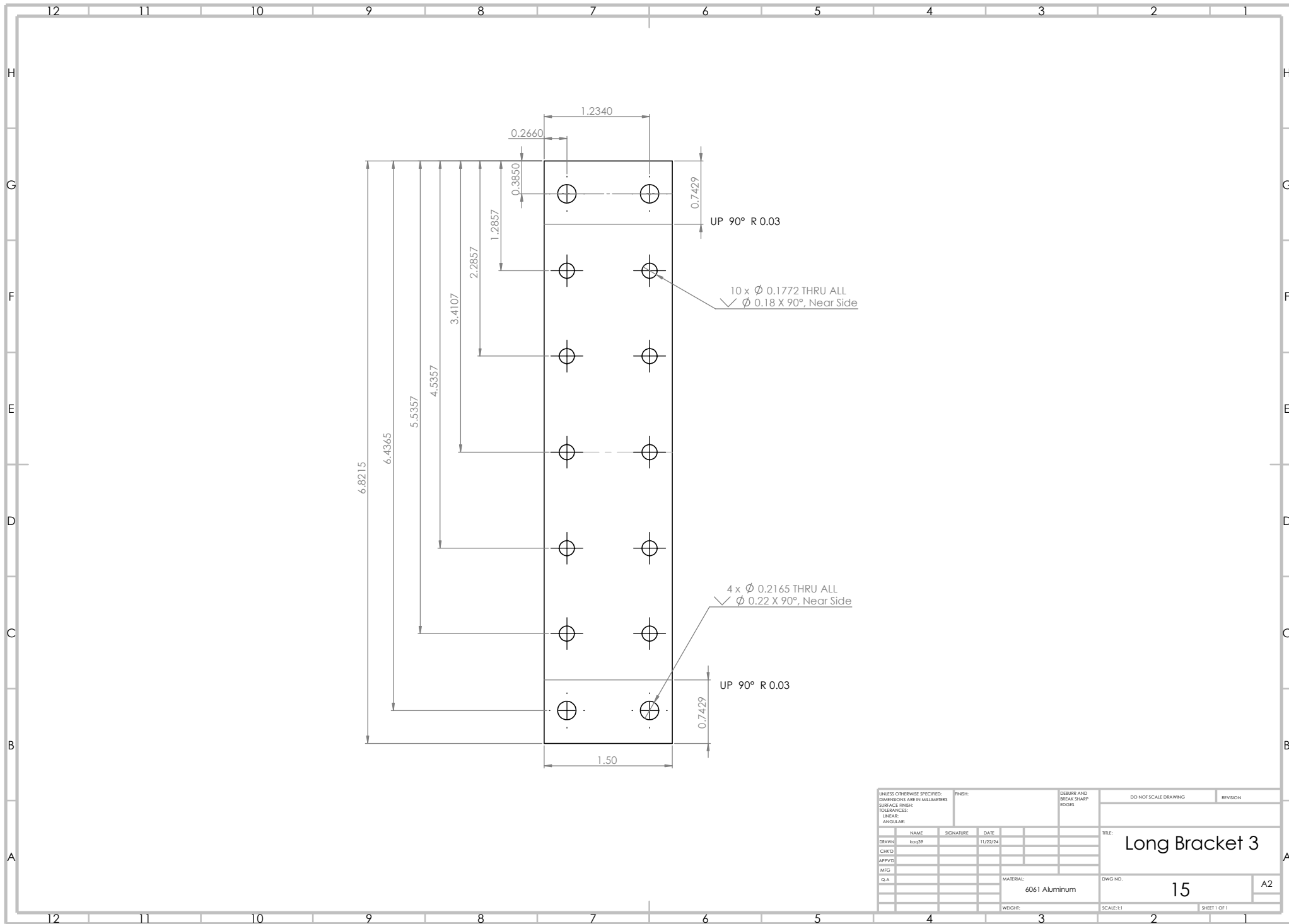




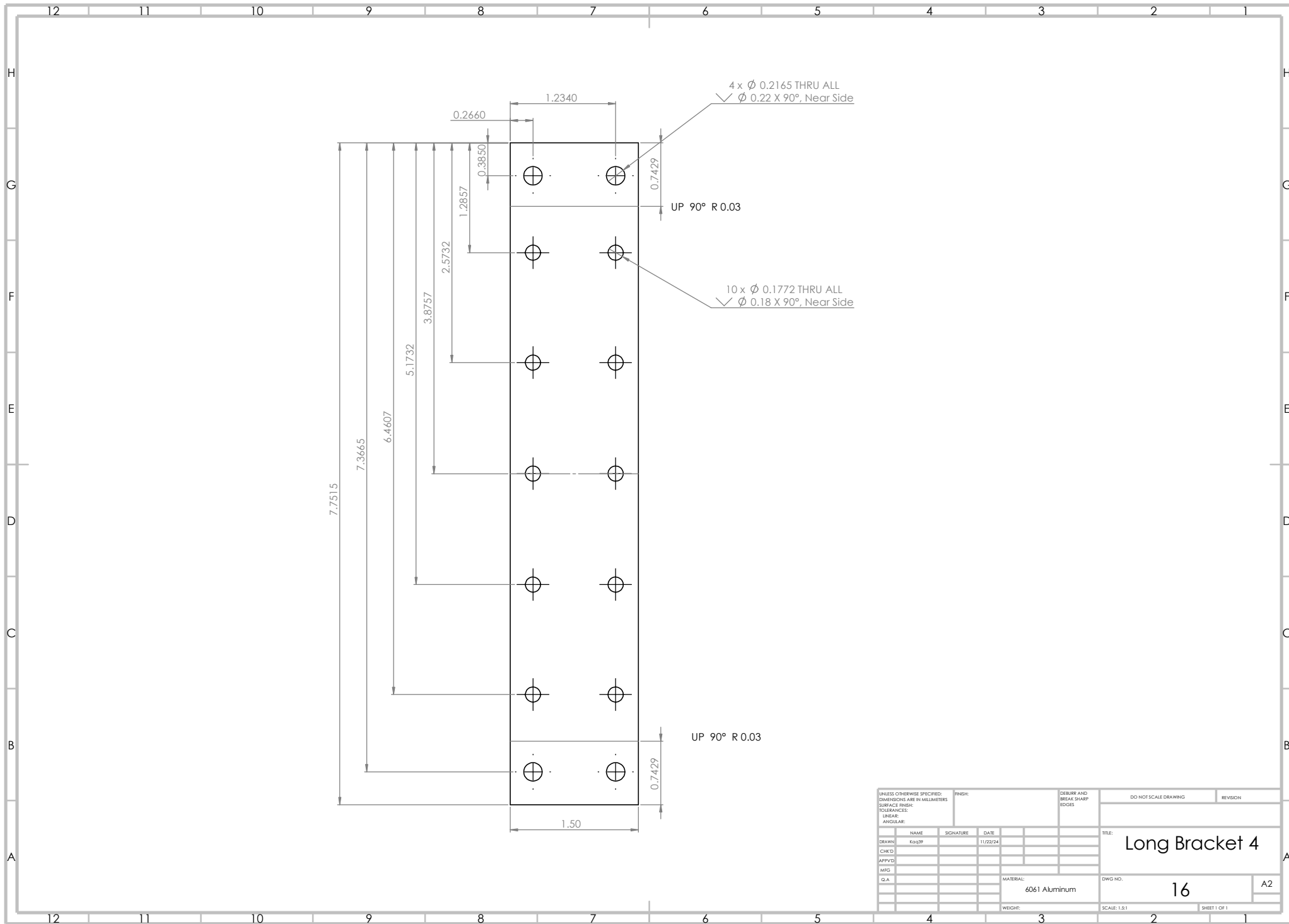
UNLESS OTHERWISE SPECIFIED: DIMENSIONS ARE IN MILLIMETERS			FINISH:	DEBURR AND BREAK SHARP EDGES	DO NOT SCALE DRAWING	REVISION
SURFACE FINISH:						
TOLERANCES:						
LINEAR:						
ANGULAR:						
DRAWN:	NAME	SIGNATURE	DATE	TITLE:		
CHKD:	KDQ39		11/22/24	Long Bracket 1		
APPVD:				MATERIAL:		
MFG:				6061 Aluminum		
QA:				DWG NO.	13	A2
				WEIGHT:	SCALE:1:1	SHEET 1 OF 1



UNLESS OTHERWISE SPECIFIED: DIMENSIONS ARE IN MILLIMETERS			FINISH:	DEBURR AND BREAK SHARP EDGES	DO NOT SCALE DRAWING	REVISION
SURFACE FINISH:						
TOLERANCES:						
LINEAR:						
ANGULAR:						
	NAME	SIGNATURE	DATE		TITLE:	
DRAWN	kdz39		11/22/24		Long Bracket 2	
CHKD						
APPVD						
MFG						
Q.A.				MATERIAL:	DWG NO.	
				6061 Aluminum	14	A2
				WEIGHT:	SCALE:1:1	SHEET 1 OF 1

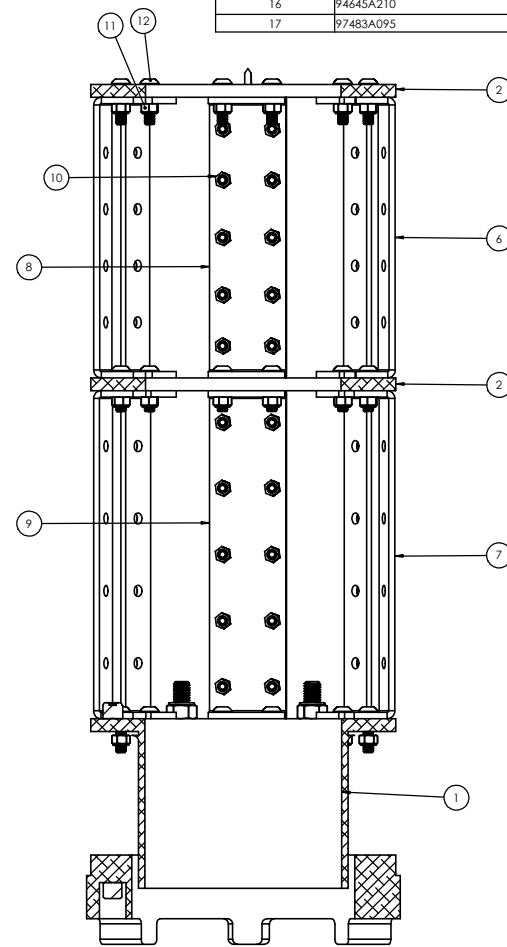
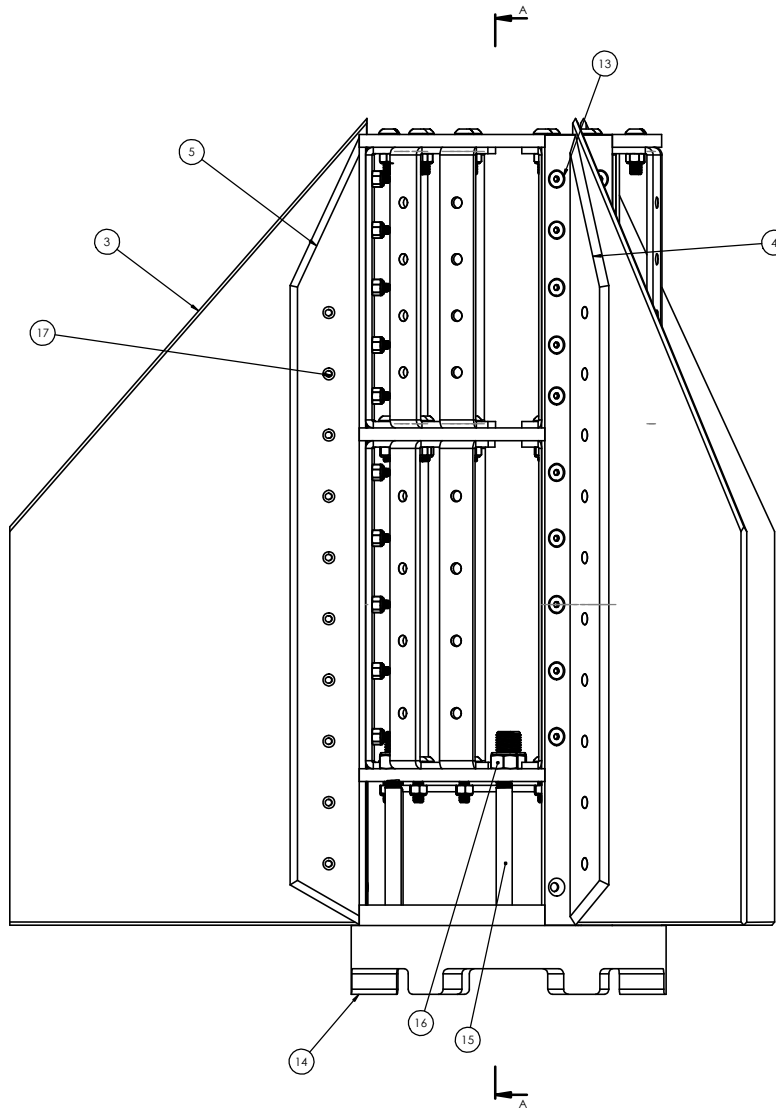


UNLESS OTHERWISE SPECIFIED: DIMENSIONS ARE IN MILLIMETERS			FINISH:	DEBURR AND BREAK SHARP EDGES	DO NOT SCALE DRAWING	REVISION
SURFACE FINISH:						
TOLERANCES:						
LINEAR:						
ANGULAR:						
DRAWN:	NAME:	SIGNATURE:	DATE:	TITLE:		
CHKD:	10239		11/22/24	Long Bracket 3		
APPVD:						
MFG:						
QA:				MATERIAL:	DWG NO.	A2
				6061 Aluminum	15	
				WEIGHT:	SCALE:1:1	SHEET 1 OF 1



UNLESS OTHERWISE SPECIFIED: DIMENSIONS ARE IN MILLIMETERS			FINISH:	DEBURR AND BREAK SHARP EDGES	DO NOT SCALE DRAWING	REVISION
SURFACE FINISH:						
TOLERANCES:						
LINEAR:						
ANGULAR:						
DRAWN	NAME	SIGNATURE	DATE	TITLE:		
CHKD	Kdq39		11/22/24	Long Bracket 4		
APPVD						
MFG						
Q.A.				MATERIAL:	DWG NO.	A2
				6061 Aluminum	16	
				WEIGHT:	SCALE: 1:1	SHEET 1 OF 1

ITEM NO.	PART NUMBER	DESCRIPTION	QTY.
1	Aft End Centering Ring with Sep Brace Maching		1
2	Centering Ring		2
3	Fin		3
4	Fin Bracket Left		3
5	Fin Bracket Right		3
6	Long Bracket 1		6
7	Long Bracket 2		6
8	Long Bracket 3		3
9	Long Bracket 4		3
10	94645A101	M4 High-Strength Steel Nylon-Insert Locknut	60
11	94645A102	M5 High-Strength Steel Nylon-Insert Locknut	36
12	92095A214	M5 Button Head Hex Drive Screw	36
13	91294A193	M4 Black-Oxide Alloy Steel Hex Drive Flat Head Screw	60
14	Seperation System Top Plate REV6		1
15	91292A214	M8 18-8 Stainless Steel Socket Head Screw	6
16	94645A210	M8 High-Strength Steel Nylon-Insert Locknut	6
17	97483A095	1/8 Aluminum Flush-Mount Solid Rivets	30



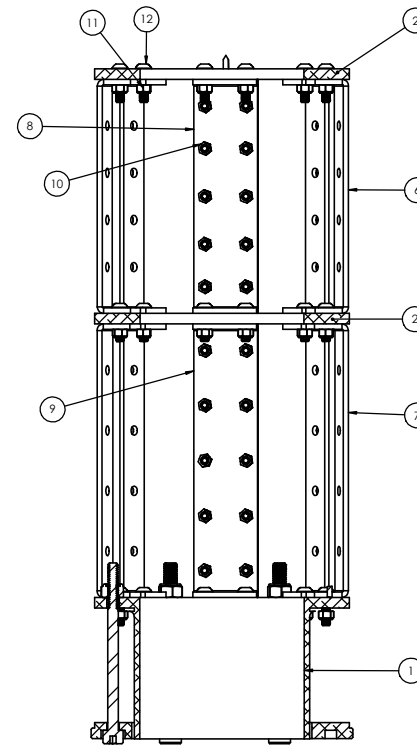
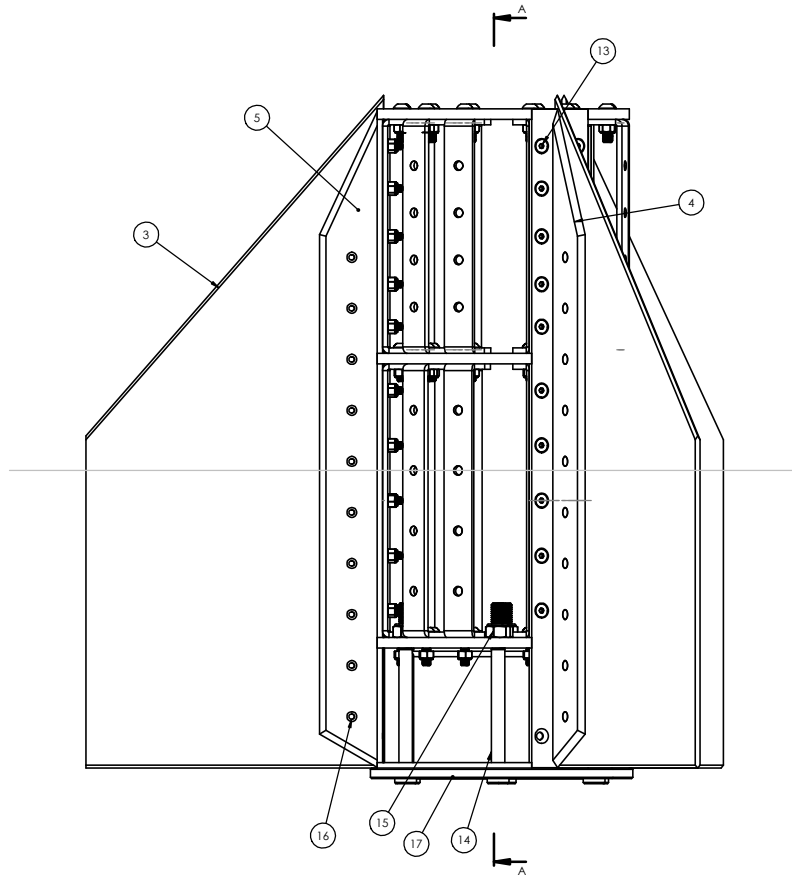
SECTION A-A
SCALE 1 : 1.25

UNLESS OTHERWISE SPECIFIED: DIMENSIONS ARE IN MILLIMETERS SURFACE FINISH TOLERANCES UNLESS INDICATED		FINISH	DATE	DO NOT SCALE DRAWING	REVISION
DATE	DESIGN	SCHEMATIC	DATE		3
DATE	APP'D				
DATE	QA				
MATERIAL			DRWG NO.	A1	
Combination			SCALE 1:1.25	SHEET 1 OF 1	

Main Vehicle Fin Canister

17

ITEM NO.	PART NUMBER	DESCRIPTION	QTY.
1	Aft End Centering Ring with Sep Brace Maching		1
2	Centering Ring		2
3	Fin		3
4	Fin Bracket Left		3
5	Fin Bracket Right		3
6	Long Bracket 1		6
7	Long Bracket 2		6
8	Long Bracket 3		3
9	Long Bracket 4		3
10	94645A101	M4 High-Strength Steel Nylon-Insert Locknut	60
11	94645A102	M5 High-Strength Steel Nylon-Insert Locknut	36
12	92095A214	M5 Button Head Hex Drive Screw	36
13	91294A193	M4 Black-Oxide Alloy Steel Hex Drive Flat Head Screw	60
14	91292A214	M8 18-8 Stainless Steel Socket Head Screw	6
15	94645A210	M8 High-Strength Steel Nylon-Insert Locknut	6
16	97483A095	1/8 Aluminum Flush-Mount Solid Rivets	30
17	2nd Stage End Cap		1



SECTION A-A
SCALE 1 : 1.5

UNLESS OTHERWISE SPECIFIED: DIMENSIONS ARE IN MILLIMETERS SURFACE FINISH IS UNLESS NOTED TOLERANCES: FRACTIONS DECIMALS		FINISH	DATE	SCALE AND GROUP CODES	DO NOT SCALE DRAWING	REVISION: 3
DATE	ISSUED	REVISED	DATE	SCALE	TITLE	
DATE	ISSUED	REVISED	DATE	SCALE	Booster Canister	
DATE	ISSUED	REVISED	DATE	SCALE	18	A1
DATE	ISSUED	REVISED	DATE	SCALE	Combination	
DATE	ISSUED	REVISED	DATE	SCALE	18	
DATE	ISSUED	REVISED	DATE	SCALE	18	
DATE	ISSUED	REVISED	DATE	SCALE	18	
DATE	ISSUED	REVISED	DATE	SCALE	18	
DATE	ISSUED	REVISED	DATE	SCALE	18	
DATE	ISSUED	REVISED	DATE	SCALE	18	

4

3

2

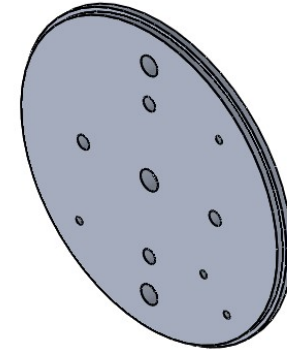
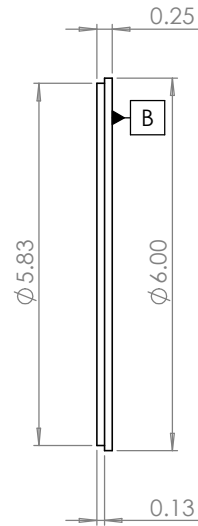
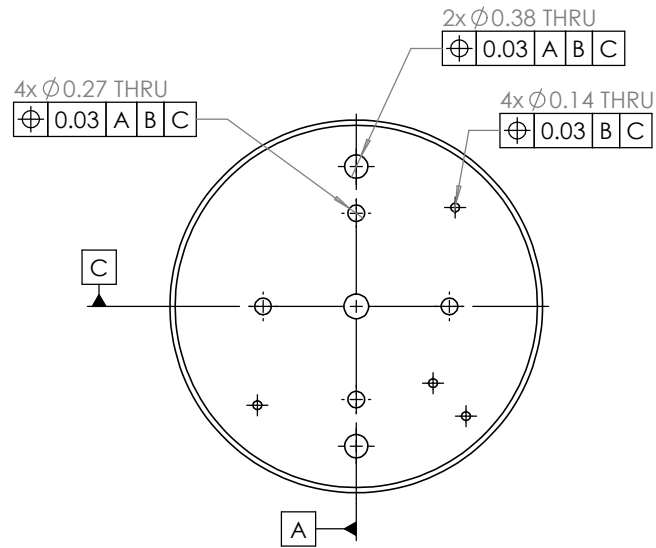
1

B

B

A

A



PROPRIETARY AND CONFIDENTIAL
 THE INFORMATION CONTAINED IN THIS DRAWING IS THE SOLE PROPERTY OF <INSERT COMPANY NAME HERE>. ANY REPRODUCTION IN PART OR AS A WHOLE WITHOUT THE WRITTEN PERMISSION OF <INSERT COMPANY NAME HERE> IS PROHIBITED.

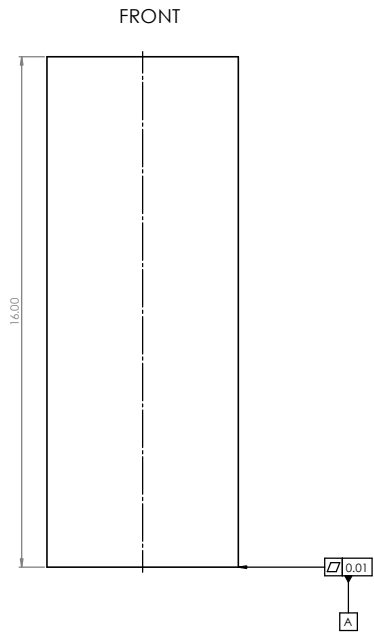
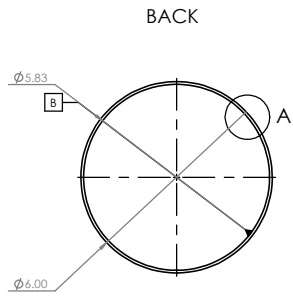
		UNLESS OTHERWISE SPECIFIED:	NAME	DATE		
		DIMENSIONS ARE IN INCHES	DRAWN	AP	11/22/24	TITLE: Avionics Bulkhead
		TOLERANCES:	CHECKED			
		FRACTIONAL: \pm	ENG APPR.			
		ANGULAR: MACH \pm BEND \pm	MFG APPR.			
		TWO PLACE DECIMAL \pm	Q.A.			SIZE DWG. NO. REV B 19
		THREE PLACE DECIMAL \pm	COMMENTS:			
		INTERPRET GEOMETRIC TOLERANCING PER:				SCALE: 1:2 WEIGHT: SHEET 1 OF 1
		MATERIAL	6061 T6			
NEXT ASSY	USED ON	FINISH				
APPLICATION		DO NOT SCALE DRAWING				

4

3

2

1



MATERIAL: CARBON FIBER (COMPOSITE)

- NOTES:
- SANDING REQUIRED FOR SMOOTH EDGES.
 - 6-7 LAYERS REQUIRED

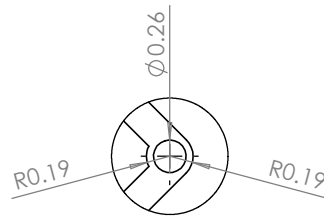
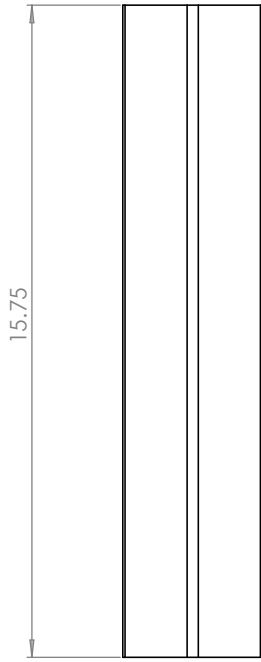
UNLESS OTHERWISE SPECIFIED: DIMENSIONS ARE IN MILLIMETERS SURFACE FINISH: SAO001 TOLERANCES: ISO		FINISH: SMOOTH, SANDING REQUIRED	DESIGN AND DRAWING GROUP	DO NOT SCALE DRAWING	REVISION:
DATE:	NAME:	SCALE:	DATE:	TITLE:	
DRAWN BY:	DESIGNED BY:	DATE:	DATE:	Avionics Coupler	
CHECKED BY:	DATE:	DATE:	DATE:	2nd Stage	
APPROVED BY:	DATE:	DATE:	DATE:	20	
DATE:	DATE:	DATE:	DATE:	A1	
DATE:	DATE:	DATE:	DATE:	COMPOSITE (CARBON FIBER)	
DATE:	DATE:	DATE:	DATE:	SCALE: 1:1	
DATE:	DATE:	DATE:	DATE:	SHEET 1 OF 1	

4

3

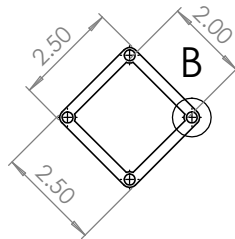
2

1



DETAIL B

SCALE 1 : 1



PROPRIETARY AND CONFIDENTIAL

THE INFORMATION CONTAINED IN THIS DRAWING IS THE SOLE PROPERTY OF <INSERT COMPANY NAME HERE>. ANY REPRODUCTION IN PART OR AS A WHOLE WITHOUT THE WRITTEN PERMISSION OF <INSERT COMPANY NAME HERE> IS PROHIBITED.

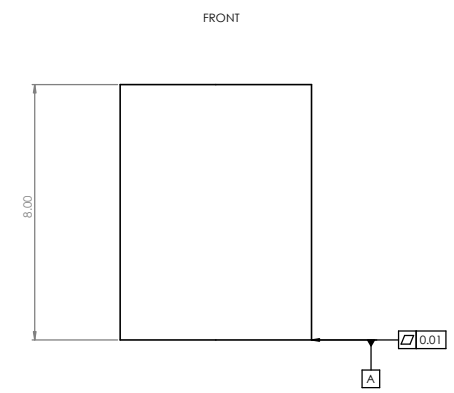
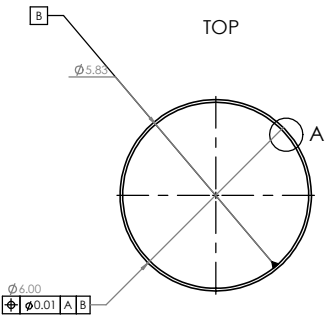
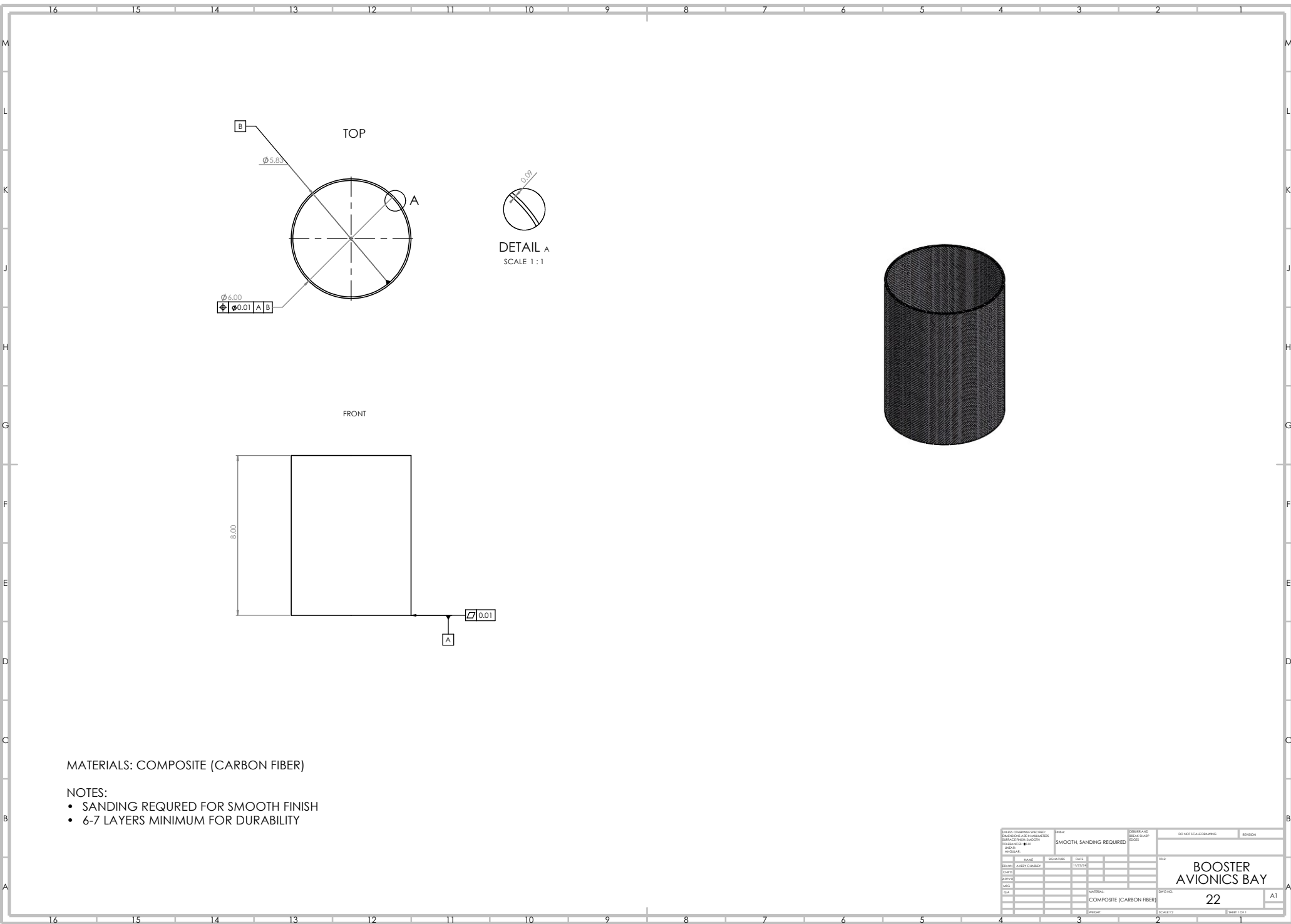
		UNLESS OTHERWISE SPECIFIED:	NAME	DATE	
		DIMENSIONS ARE IN INCHES	DRAWN		
		TOLERANCES:	CHECKED		
		FRACTIONAL \pm	ENG APPR.		
		ANGULAR: MACH \pm BEND \pm	MFG APPR.		
		TWO PLACE DECIMAL \pm	Q.A.		
		THREE PLACE DECIMAL \pm	COMMENTS:		
		INTERPRET GEOMETRIC TOLERANCING PER:			
		MATERIAL			
		FINISH			
NEXT ASSY	USED ON	APPLICATION			
		DO NOT SCALE DRAWING			
			TITLE: 3d Printed Avionics Sled		
SIZE	DWG. NO.	REV			
B	21				
SCALE: 1:4		WEIGHT:	SHEET 1 OF 1		

4

3

2

1



MATERIALS: COMPOSITE (CARBON FIBER)

- NOTES:
- SANDING REQUIRED FOR SMOOTH FINISH
 - 6-7 LAYERS MINIMUM FOR DURABILITY

UNLESS OTHERWISE SPECIFIED: DIMENSIONS ARE IN MILLIMETERS SURFACE FINISH UNLESS NOTED TOLERANCES ARE:		FINISH: SMOOTH, SANDING REQUIRED	DESIGN AND DRAWING GROUP	DO NOT SCALE DRAWING	REVISION
DATE	NAME	SCALE	DATE	TITLE	
DATE	DESIGNER/ENGINEER	DATE	DATE	BOOSTER AVIONICS BAY	
DATE	CHECKER	DATE	DATE	22	
DATE	DATE	DATE	DATE	A1	
DATE	DATE	DATE	DATE	COMPOSITE (CARBON FIBER)	
DATE	DATE	DATE	DATE	2	
DATE	DATE	DATE	DATE	SCALE 1:1	
DATE	DATE	DATE	DATE	SHEET 1 OF 1	

4

3

2

1

ITEM NO.	PART NUMBER	DESCRIPTION	QTY.
1	Avionics Coupler 2nd Stage	Carbon Coupler	1
2	SecondStageAftAV Bulkhead	6061 Aft Bulkhead	1
3	Avionics Bulkhead	6061 Bulkhead	1
4	Avionics Sled	3d Printed Avionics Sled	1
5	Raven 4 v9	Featherweight Flight Computer	2
6	GPS Tracker v15	Featherweight GPS	1
7	92001A321	18-8 Stainless Steel Wing Nut	8
8	90322A657	High-Strength Steel Threaded Rod	4
9	Switch Band	Carbon Switch Band	1
10	3014T954	Steel Eyebolt with Shoulder - for Lifting	1
11	97135A230	High-Strength Steel Nylon-Insert Locknut	1

B

B

A

A

PROPRIETARY AND CONFIDENTIAL
 THE INFORMATION CONTAINED IN THIS
 DRAWING IS THE SOLE PROPERTY OF
 <INSERT COMPANY NAME HERE>. ANY
 REPRODUCTION IN PART OR AS A WHOLE
 WITHOUT THE WRITTEN PERMISSION OF
 <INSERT COMPANY NAME HERE> IS
 PROHIBITED.

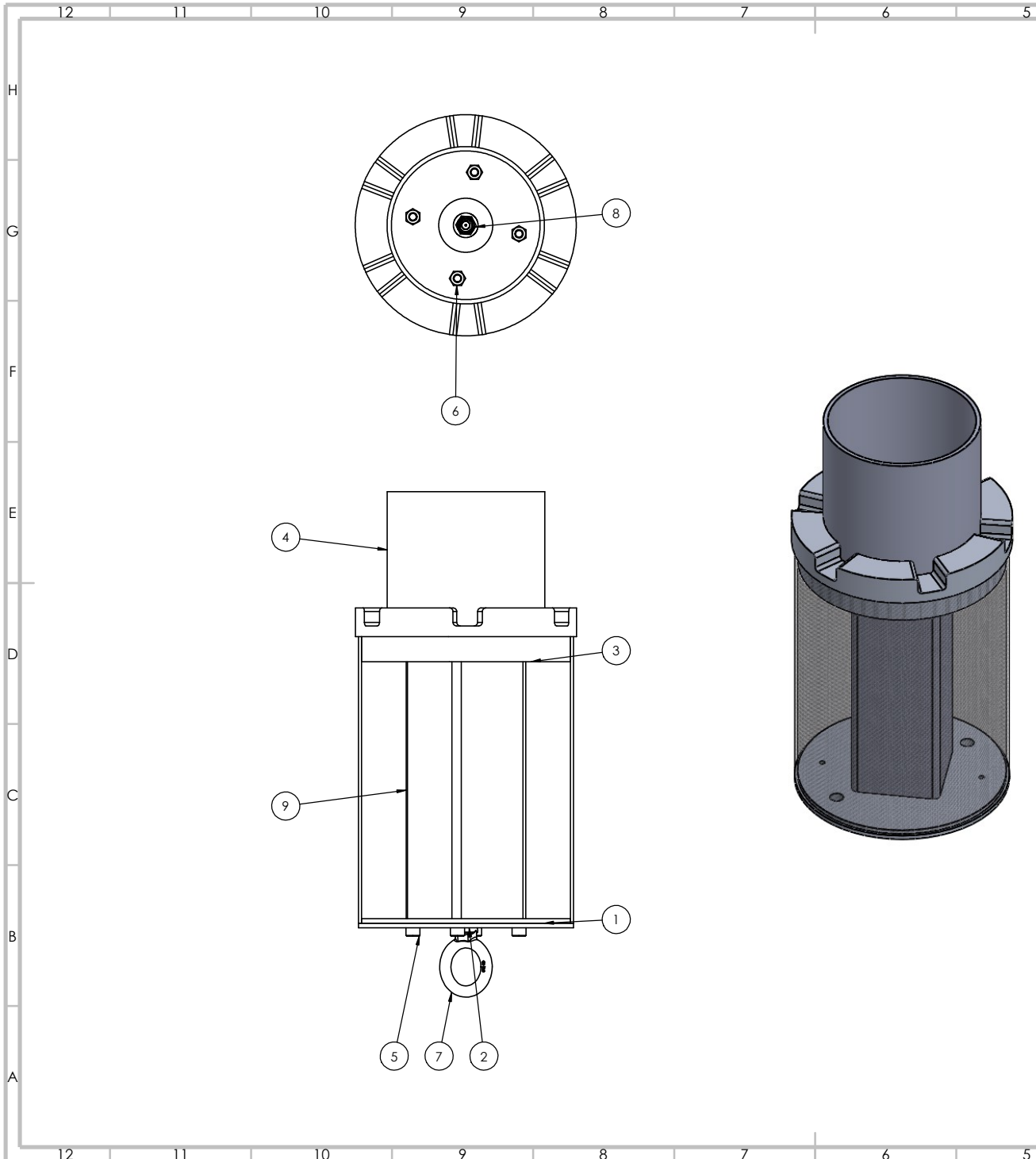
		UNLESS OTHERWISE SPECIFIED:	NAME	DATE			
		DIMENSIONS ARE IN INCHES	DRAWN	AP	11/22/24	TITLE: <h2 style="text-align: center;">Avionics Bay Second Stage</h2>	
		TOLERANCES:	CHECKED				
		FRACTIONAL ±	ENG APPR.				
		ANGULAR: MACH ± BEND ±	MFG APPR.				
		TWO PLACE DECIMAL ±	Q.A.				
		THREE PLACE DECIMAL ±	COMMENTS:				
		INTERPRET GEOMETRIC TOLERANCING PER:					
		MATERIAL					
		Combination					
		FINISH					
		None					
NEXT ASSY	USED ON				SIZE B	DWG. NO. 23	REV
APPLICATION		DO NOT SCALE DRAWING		SCALE: 1:8 WEIGHT:		SHEET 1 OF 1	

4

3

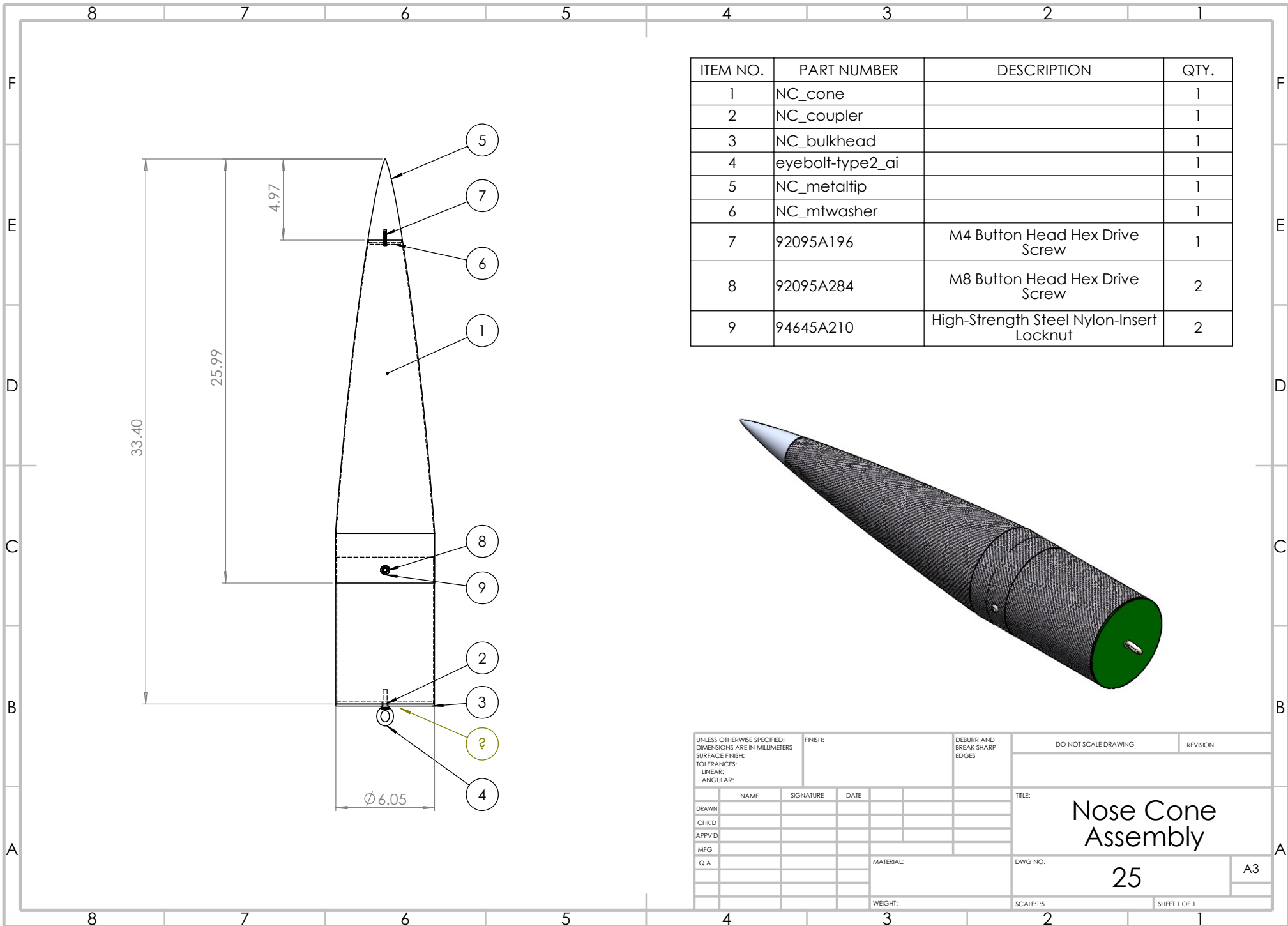
2

1



ITEM NO.	PART NUMBER	DESCRIPTION	QTY.
1	Booster Avionics Bay		1
2	Avionics Bulkhead		1
3	BottomPlateRevision7		1
4	InnerTubeBottomPlate Revision7		1
5	B18.3.1M - 6 x 1.0 x 120 Hex SHCS -- 24NHX		4
6	AM-M6-N		4
7	3014T954	Steel Eyebolt with Shoulder - for Lifting	1
8	ASME B18.16.6-FLNG-0.313-18-N		1
9	Avionics Sled Booster	3d Printed Avionics Sled	1

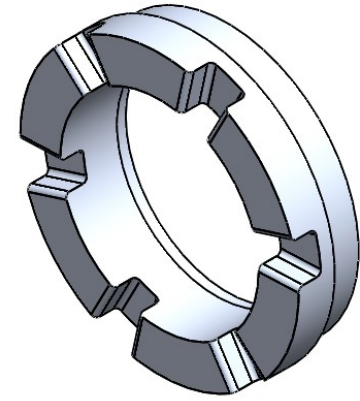
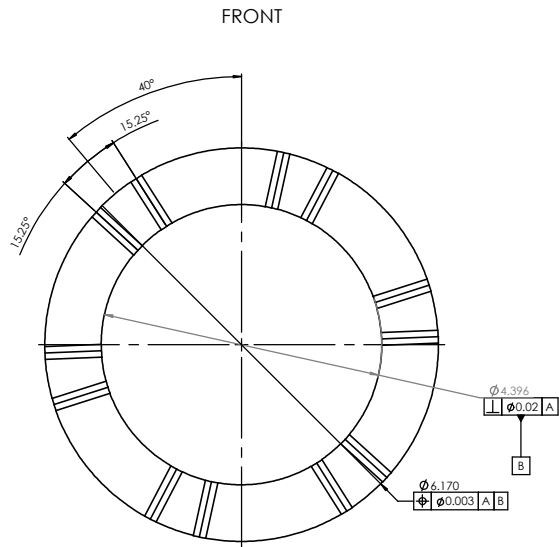
UNLESS OTHERWISE SPECIFIED: DIMENSIONS ARE IN MILLIMETERS SURFACE FINISH: TOLERANCES: LINEAR: ANGULAR:			FINISH:	DEBURR AND BREAK SHARP EDGES	DO NOT SCALE DRAWING	REVISION
DRAWN:	NAME	SIGNATURE	DATE	TITLE: Seperation System Coupler		
CHKD:				DWG NO. 24		
APPVD:				SHEET 1 OF 1		
MFG:				SCALE:1:3		
QA:				A2		
				WEIGHT:		



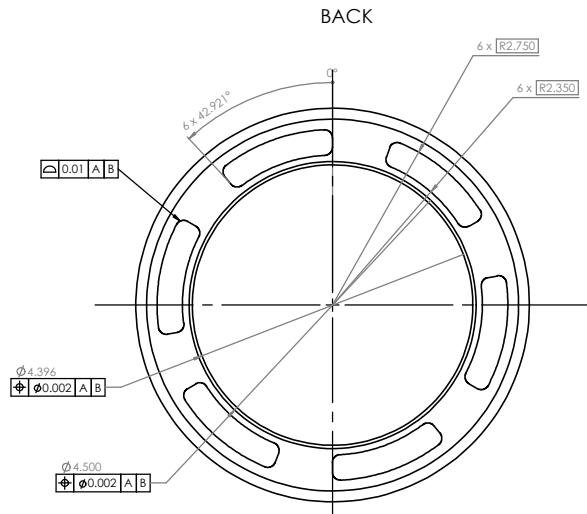
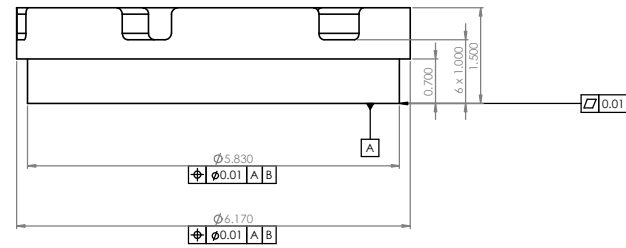
ITEM NO.	PART NUMBER	DESCRIPTION	QTY.
1	NC_cone		1
2	NC_coupler		1
3	NC_bulkhead		1
4	eyebolt-type2_ai		1
5	NC_metaltip		1
6	NC_mtwasher		1
7	92095A196	M4 Button Head Hex Drive Screw	1
8	92095A284	M8 Button Head Hex Drive Screw	2
9	94645A210	High-Strength Steel Nylon-Insert Locknut	2



UNLESS OTHERWISE SPECIFIED: DIMENSIONS ARE IN MILLIMETERS SURFACE FINISH: TOLERANCES: LINEAR: ANGULAR:			FINISH:	DEBURR AND BREAK SHARP EDGES	DO NOT SCALE DRAWING	REVISION
DRAWN	NAME	SIGNATURE	DATE		TITLE: Nose Cone Assembly	
CHKD					DWG NO. 25	
APPVD					A3	
MFG				MATERIAL:	SCALE:1:5	
G.A.				WEIGHT:	SHEET 1 OF 1	



BOTTOM



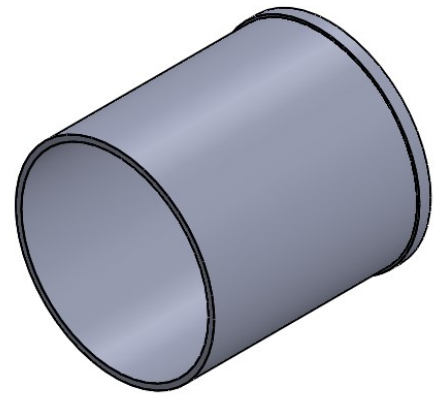
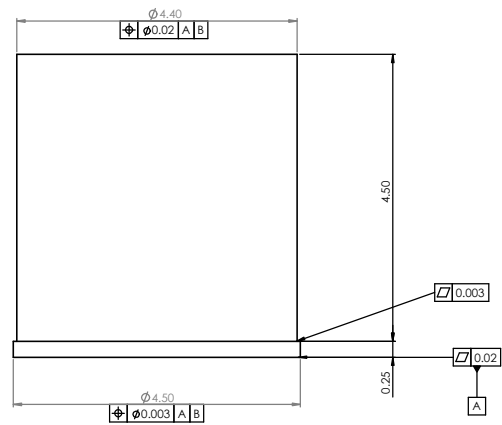
MATERIAL: ALUMINUM 6061-T6

NOTE:

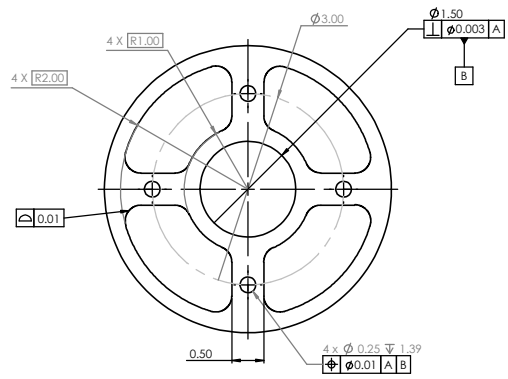
- BOTTOM CUT FILLETS R = 0.125 IN
- TOP SLOTTED FILLETS R = 0.1 IN

UNLESS OTHERWISE SPECIFIED: DIMENSIONS ARE IN INCHES SURFACE FINISH IS UNLESS INDICATED OTHERWISE		FINISH: SMOOTH	DESIGN AND DRAWING GROUP BOES	DO NOT SCALE DRAWING	REVISION: 8
DATE	ISSUE	SCALE	DATE	TITLE:	
DESIGNER	APPROVED			OUTER BOTTOM PLATE	
DRAWN	CHECKED			26 A1	
DATE		MATERIAL:	6061-T6 (ALUMINUM)	DWG NO:	
		WEIGHT:		SCALE:	1:1

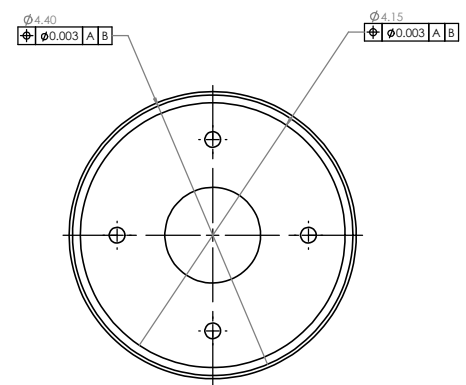
BOTTOM



BACK



FRONT

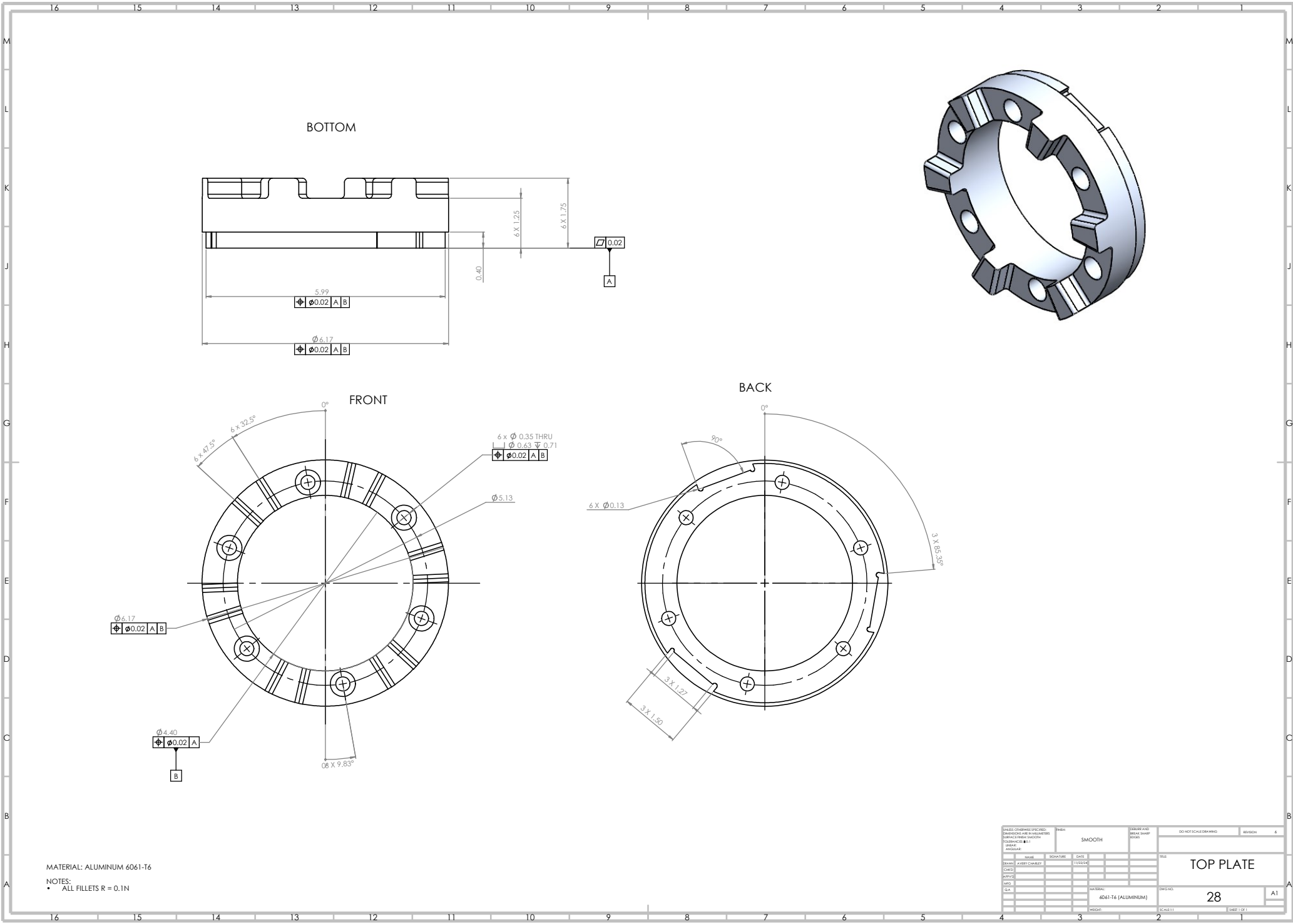


MATERIAL : ALUMINUM 6061-T6

NOTE:

- PATTERN CUTOUT FILLETS R = 0.1 IN
- PATTERN CUTOUTS DEPTH = 0.25 IN

UNLESS OTHERWISE SPECIFIED: DIMENSIONS ARE IN INCHES SURFACE FINISH AS SHOWN TOLERANCES: FRACTIONS DECIMALS ANGLES		FINISH: SMOOTH	EDGES AND SHARP CORNERS: CHAMFER	DO NOT SCALE DRAWING	REVISION: 9
DATE:	SCALE:	DATE:	SCALE:	TITLE: INNER TUBE BOTTOM PLATE	
DESIGNER:	SCALE:	DATE:	SCALE:	27	
DRAWN:	SCALE:	DATE:	SCALE:	A1	
CHECKED:	SCALE:	DATE:	SCALE:		
MATERIAL: 6061-T6 (ALUMINUM)	WEIGHT:	DWG NO.:	SCALE: 1:1	SHEET 1 OF 1	



UNLESS OTHERWISE SPECIFIED: DIMENSIONS ARE IN INCHES SURFACE FINISH UNLESS NOTED TOLERANCES: FRACTIONS DECIMALS		FINISH: SMOOTH	DESIGN AND DRAWING GROUP BOES	DO NOT SCALE DRAWING	REVISION: 4
DATE	ISSUE	SCHEMATIC	DATE	TITLE: TOP PLATE	
DESIGNER	APPROVED	DATE	DATE	28	
DATE	DATE	DATE	DATE	A1	
DATE	DATE	DATE	DATE	SCALE: 1:1	
DATE	DATE	DATE	DATE	SHEET 1 OF 1	