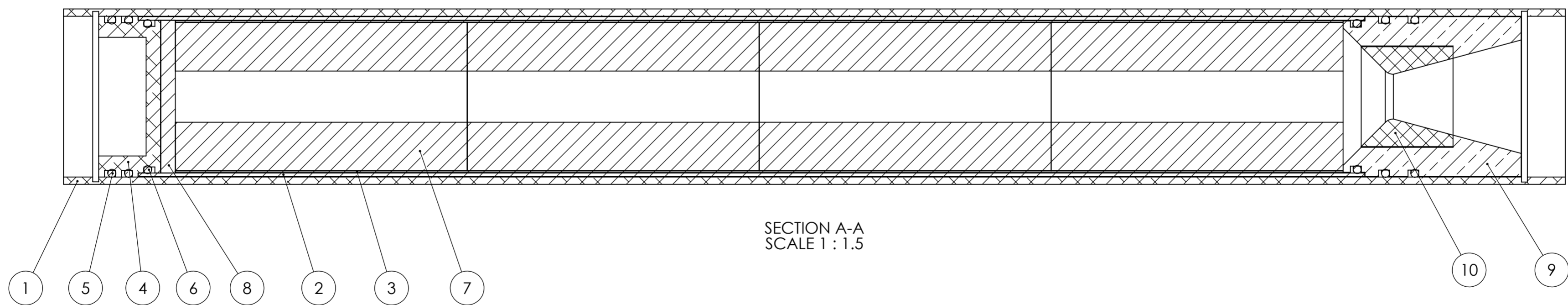
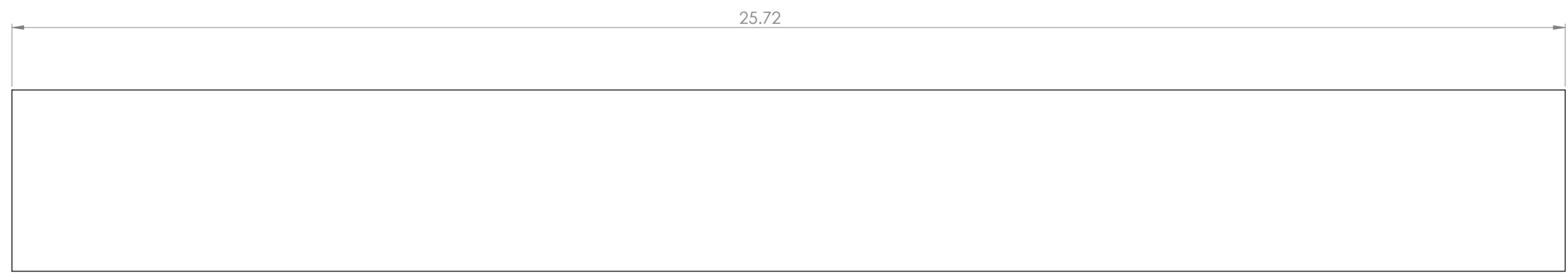


12 11 10 9 8 7 6 5 4 3 2 1

ITEM NO.	PART NUMBER	DESCRIPTION	QTY.
1	Aluminum Tube (3in)	75mm Aluminum Casing (4 Grain)	1
2	75mm Liner	Insulating Material Protecting Aluminum Casing	1
3	75mm Casting Tube	Tube Where Propellant Is Casted Into	1
4	Forward Bulkhead V2	Back End Of Casing To Hold Internal Pressure In	1
5	High-Heat Dash 230 O-Ring	O-Ring For Casing Attachment	4
6	High-Heat Dash 229 O-Ring	O-Ring For Liner Attachment	2
7	Grain (76mm 4G)	Fuel For The Rocket	4
8	Phenolic Spacer	Protects Forward Bulkhead From High-Heat	1
9	Nozzle	Creates The Thrust Required To Launch	1
10	Insert	Protects the Throat of Nozzle From High Thermal Stresses	1



SECTION A-A
SCALE 1 : 1.5

UNLESS OTHERWISE SPECIFIED: DIMENSIONS ARE IN MILLIMETERS			FINISH:		DEBURR AND BREAK SHARP EDGES		DO NOT SCALE DRAWING		REVISION	
SURFACE FINISH:										
TOLERANCES:										
LINEAR:										
ANGULAR:										
DRAWN		NAME		SIGNATURE		DATE		TITLE:		
CHK'D		RLD				4/12/24		Test Assembly FINAL		
APPV'D										
MFG										
Q.A								MATERIAL:		DWG NO.
										A2
								WEIGHT:		SCALE:1:5
										SHEET 1 OF 1

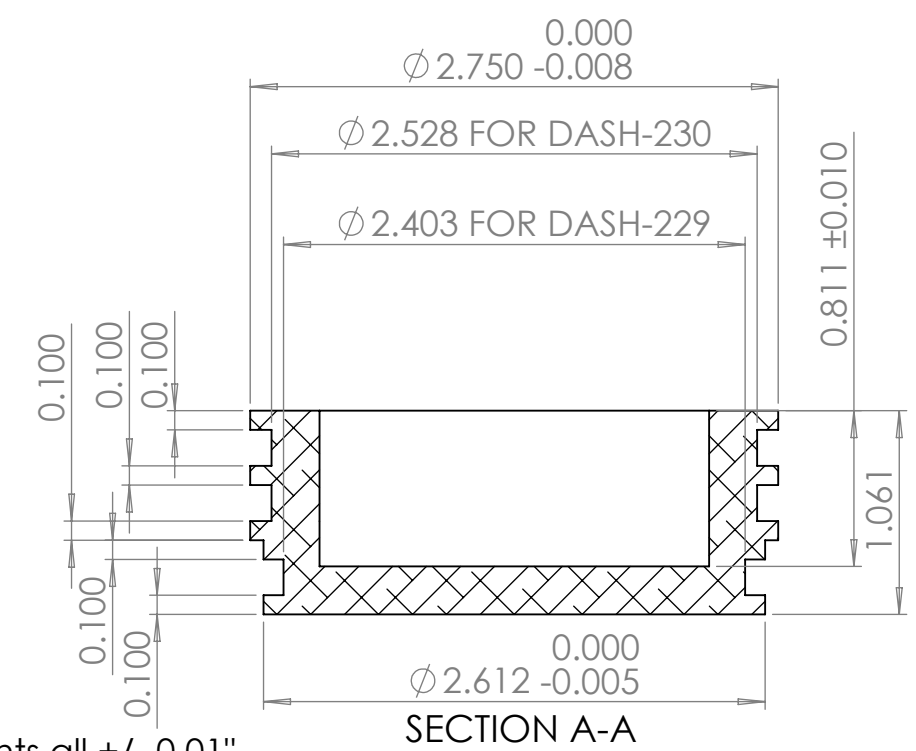
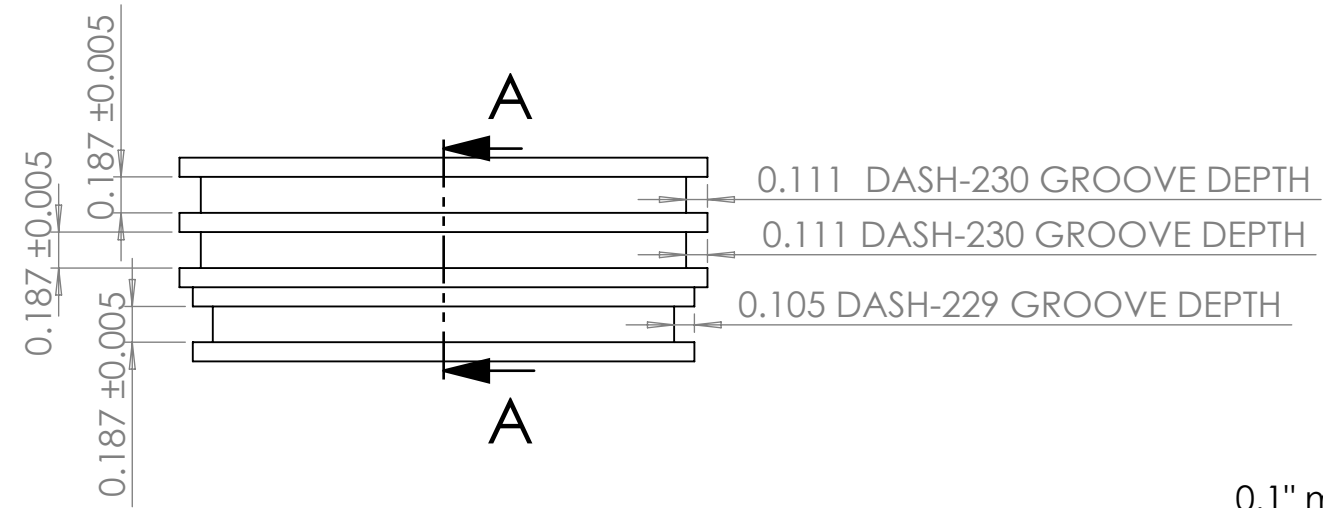
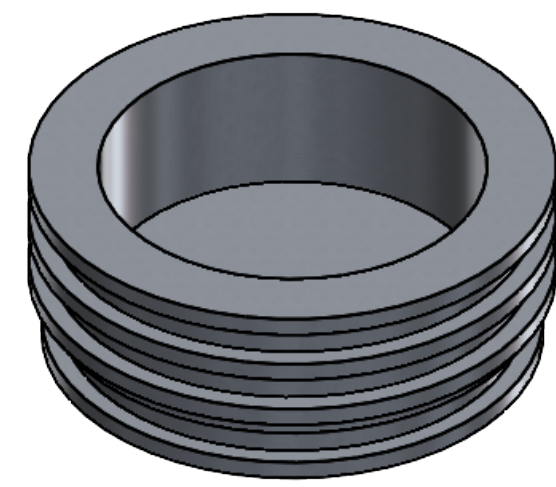
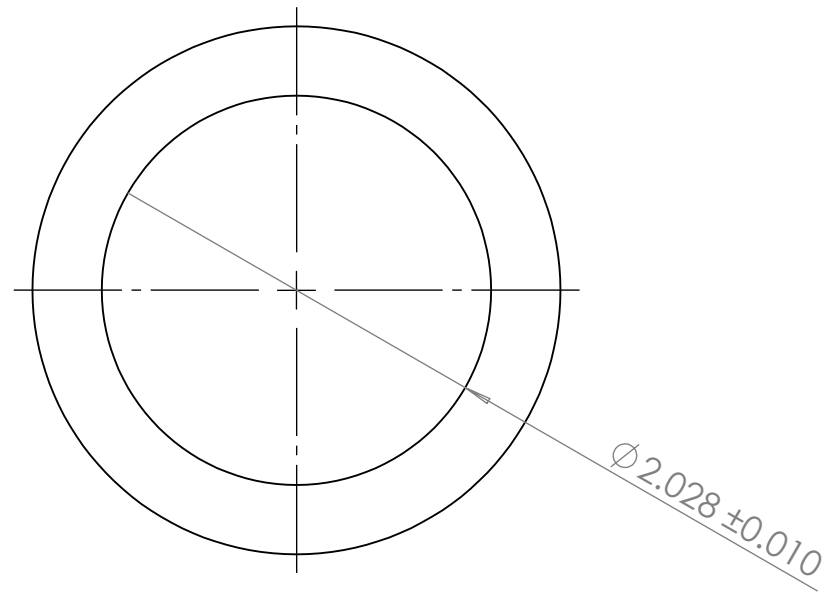
12 11 10 9 8 7 6 5 4 3 2 1

4

3

2

1



0.1" measurements all +/- 0.01"

ALL O-RING MEASUREMENTS TOLERANCE OF +0.005/-0.000

PROPRIETARY AND CONFIDENTIAL
THE INFORMATION CONTAINED IN THIS DRAWING IS THE SOLE PROPERTY OF <INSERT COMPANY NAME HERE>. ANY REPRODUCTION IN PART OR AS A WHOLE WITHOUT THE WRITTEN PERMISSION OF <INSERT COMPANY NAME HERE> IS PROHIBITED.

		UNLESS OTHERWISE SPECIFIED:		NAME	DATE	TITLE: Forward Bulkhead V2	
		DIMENSIONS ARE IN INCHES		DRAWN	RLD		1/13/24
		TOLERANCES:		CHECKED			
		FRACTIONAL \pm		ENG APPR.			
		ANGULAR: MACH \pm BEND \pm		MFG APPR.			
		TWO PLACE DECIMAL \pm		Q.A.			
		THREE PLACE DECIMAL \pm		COMMENTS:			
		INTERPRET GEOMETRIC TOLERANCING PER:				SIZE DWG. NO. REV	
		MATERIAL Aluminum				B	
NEXT ASSY	USED ON	FINISH				SCALE: 1:1 WEIGHT: SHEET 1 OF 1	
APPLICATION		DO NOT SCALE DRAWING					

4

3

2

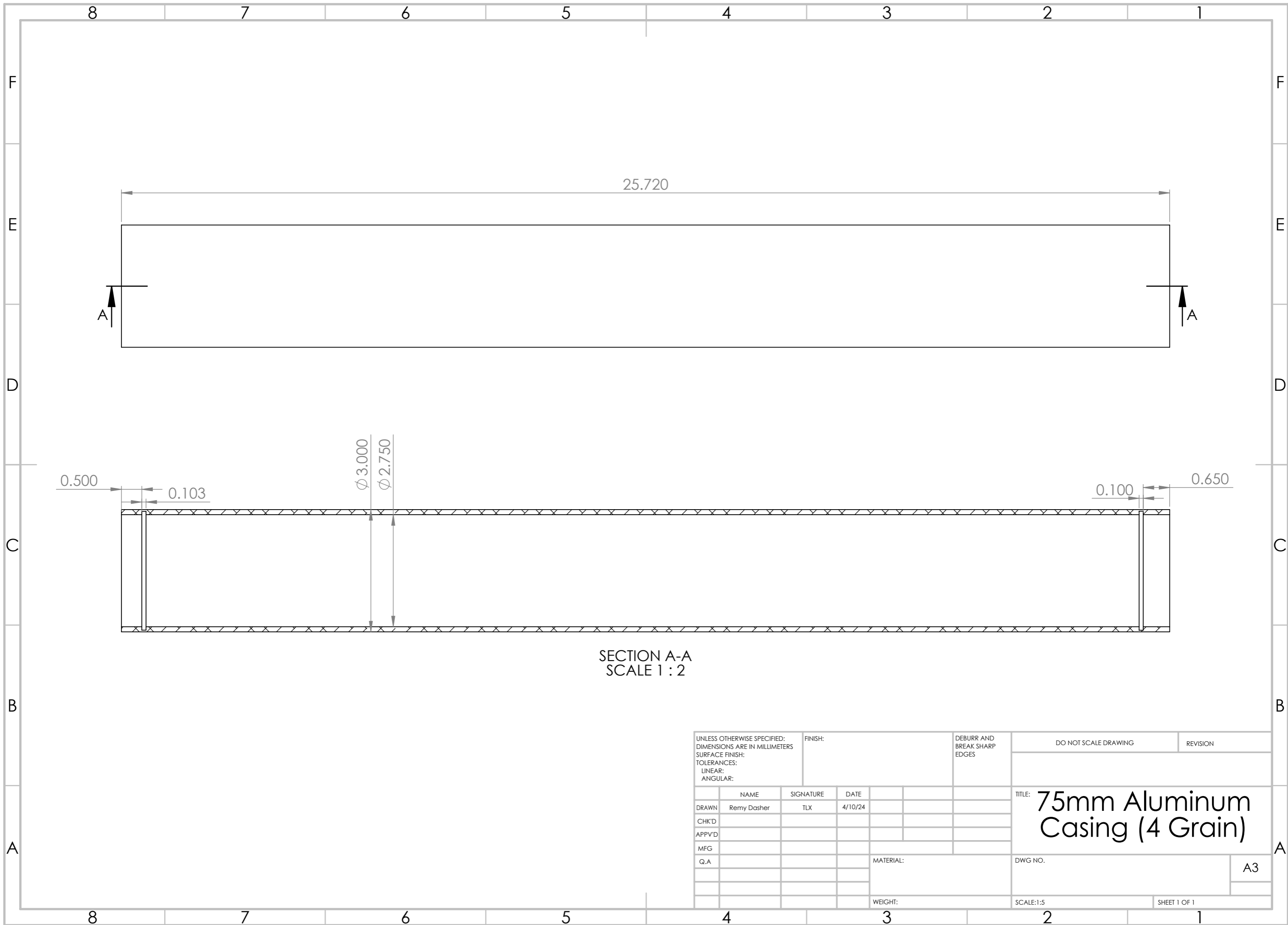
1

B

B

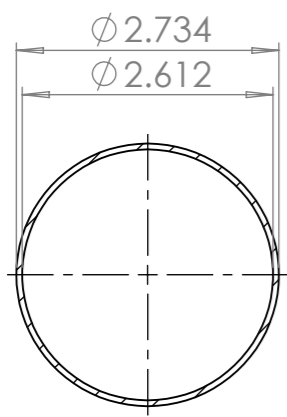
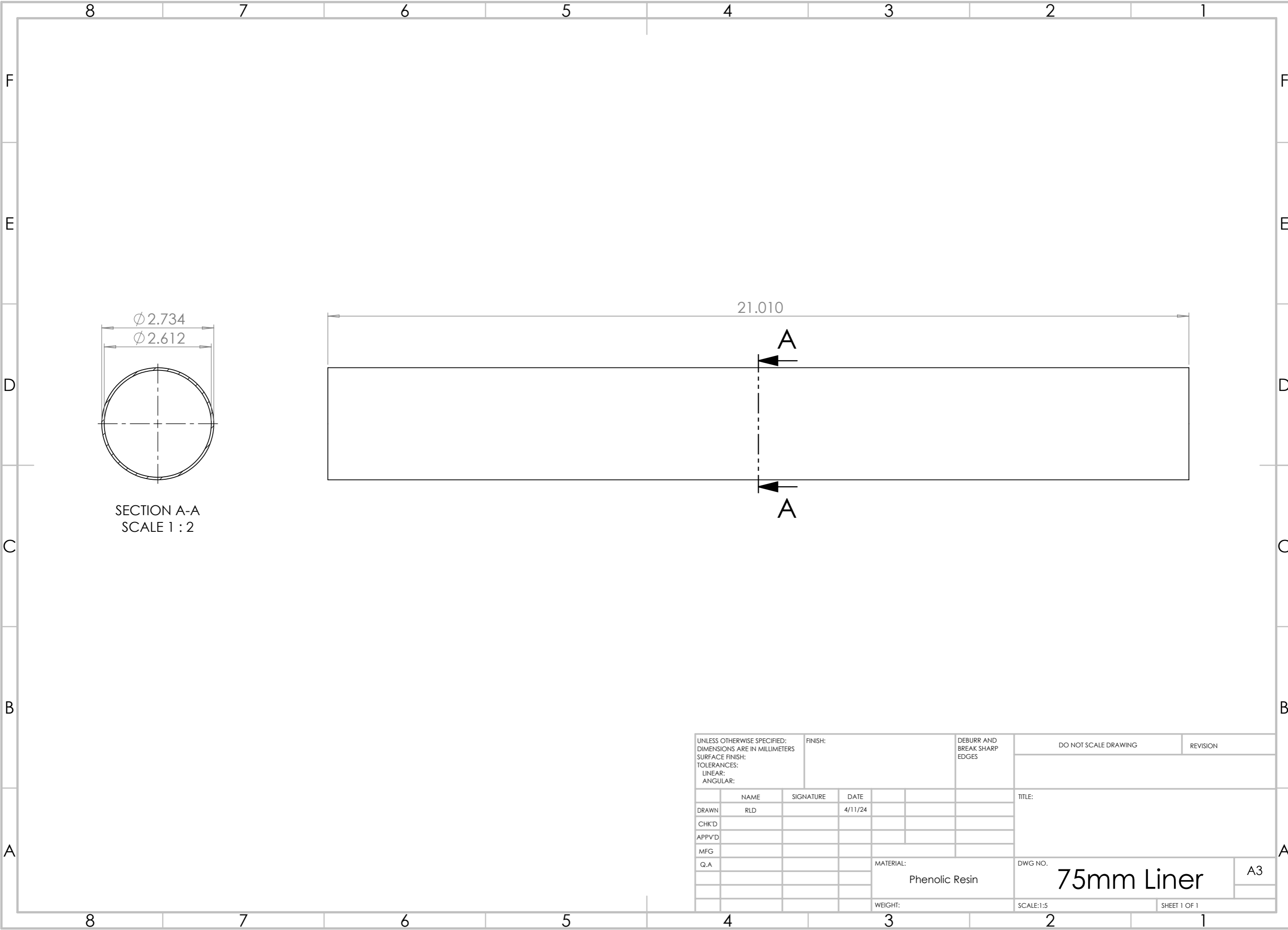
A

A

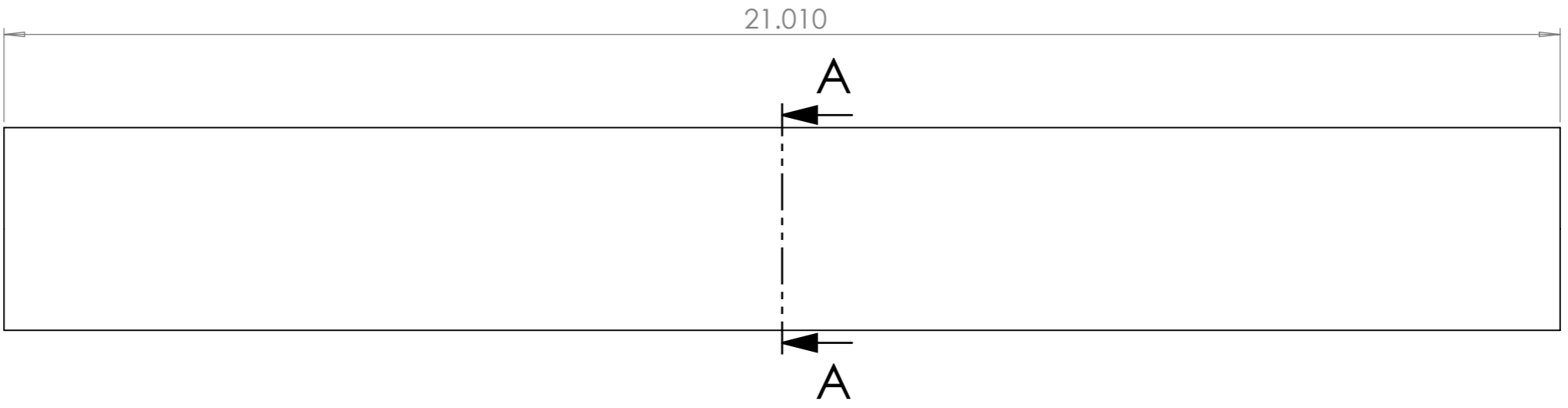


SECTION A-A
SCALE 1 : 2

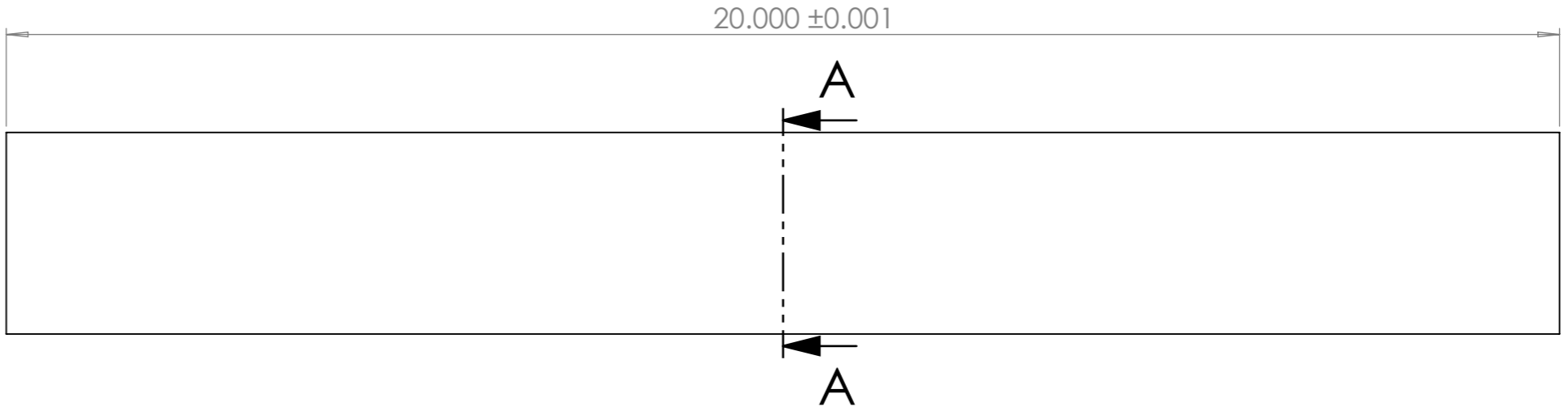
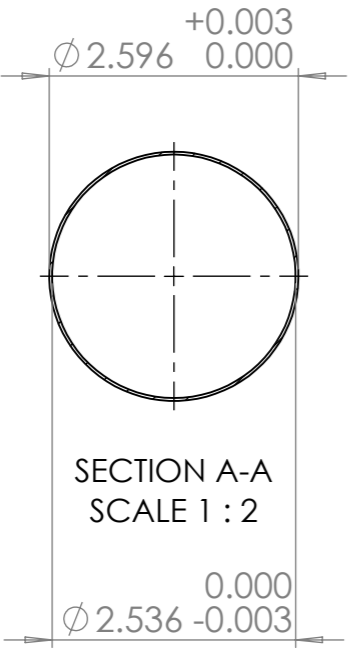
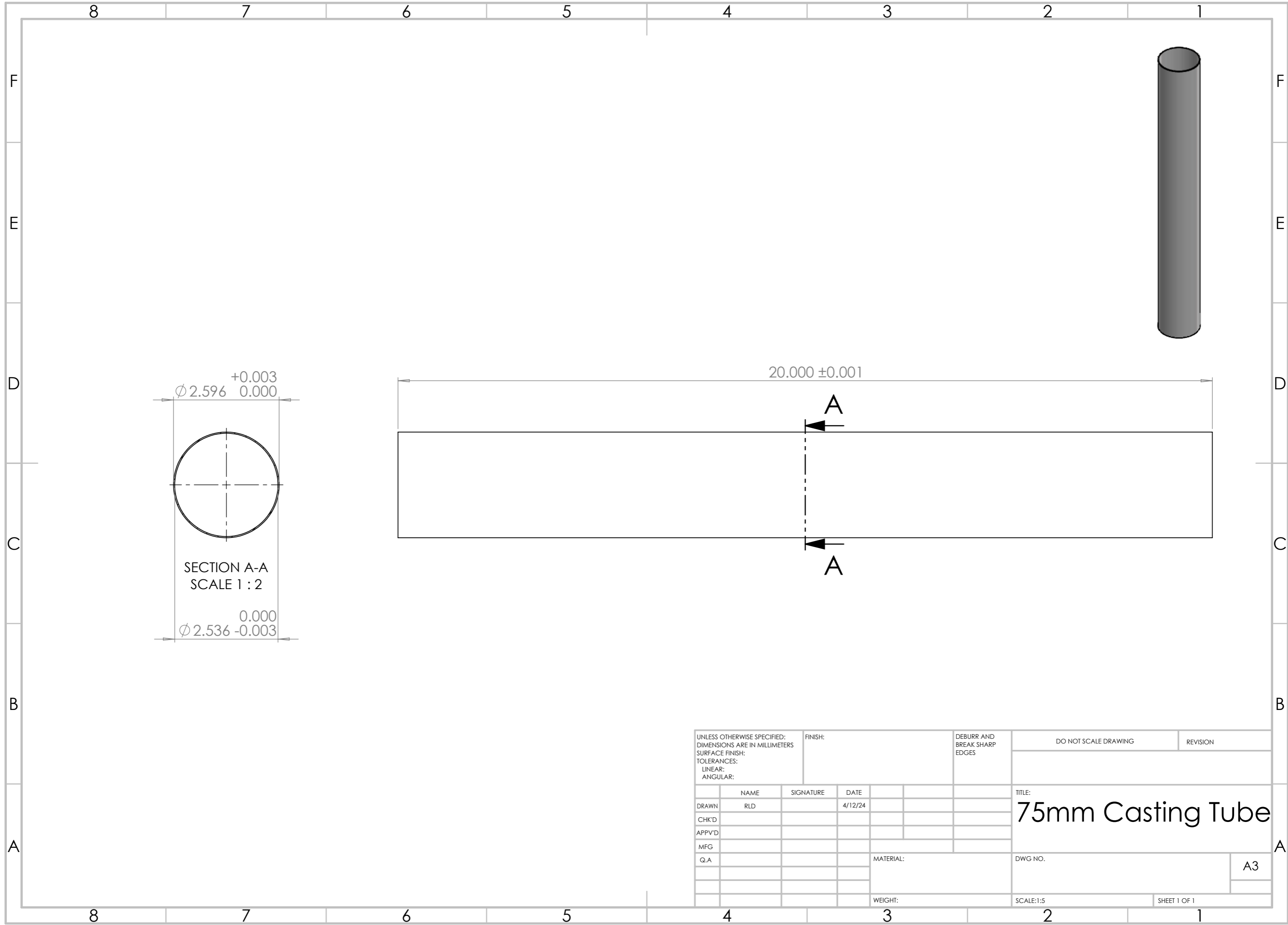
UNLESS OTHERWISE SPECIFIED: DIMENSIONS ARE IN MILLIMETERS				FINISH:		DEBURR AND BREAK SHARP EDGES		DO NOT SCALE DRAWING		REVISION	
SURFACE FINISH:								TITLE: 75mm Aluminum Casing (4 Grain)			
TOLERANCES:											
LINEAR:											
ANGULAR:											
	NAME	SIGNATURE	DATE					DWG NO.		A3	
DRAWN	Remy Dasher	TLX	4/10/24								
CHK'D											
APPV'D											
MFG											
Q.A						MATERIAL:					
						WEIGHT:		SCALE:1:5		SHEET 1 OF 1	



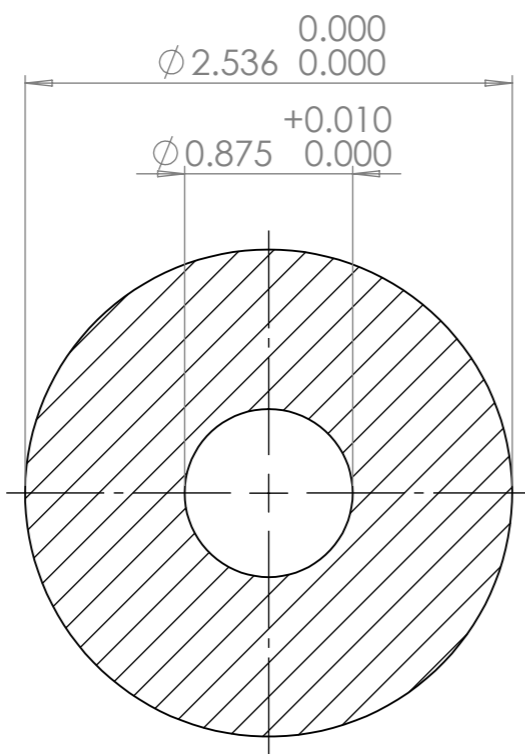
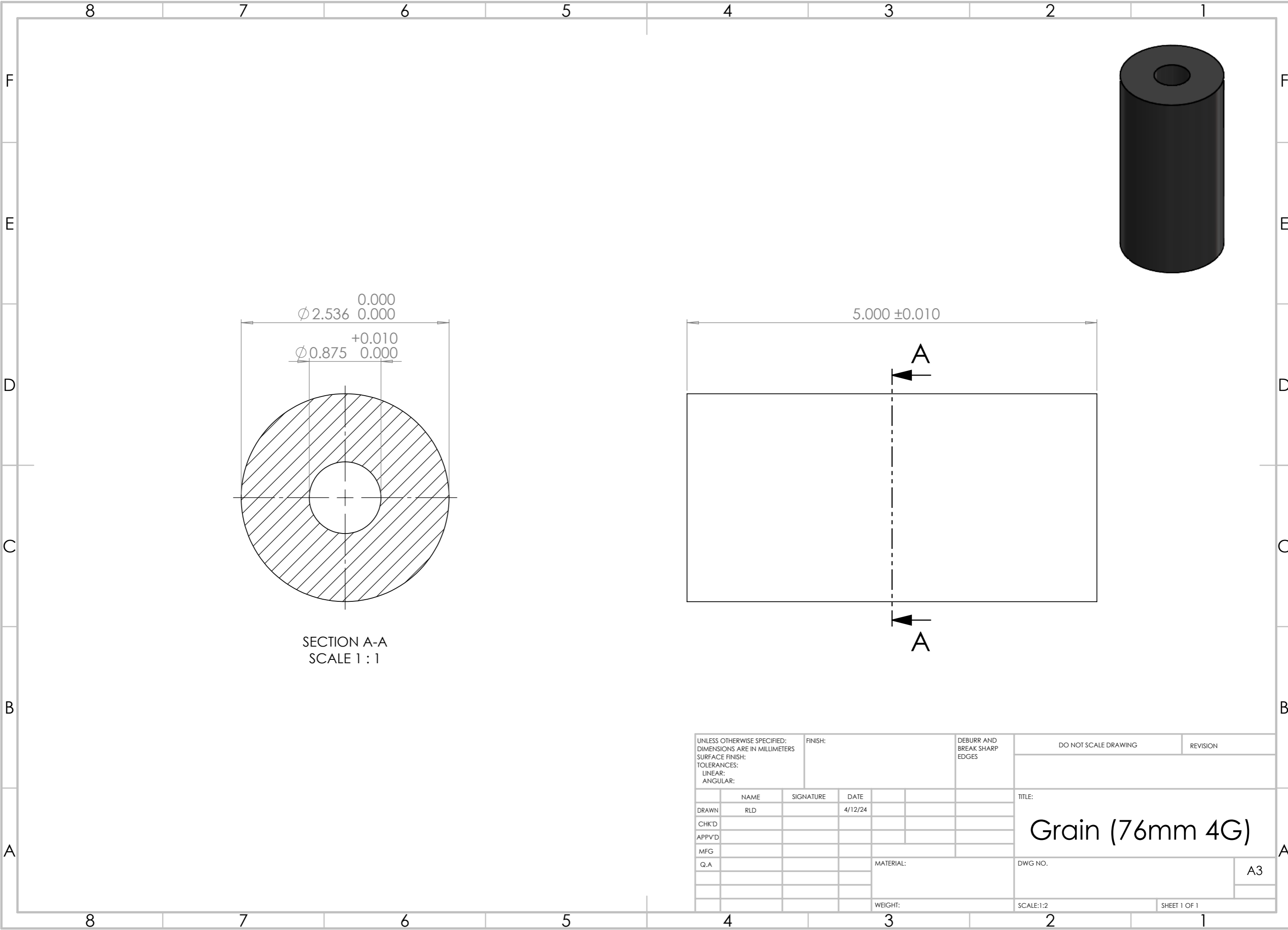
SECTION A-A
SCALE 1 : 2



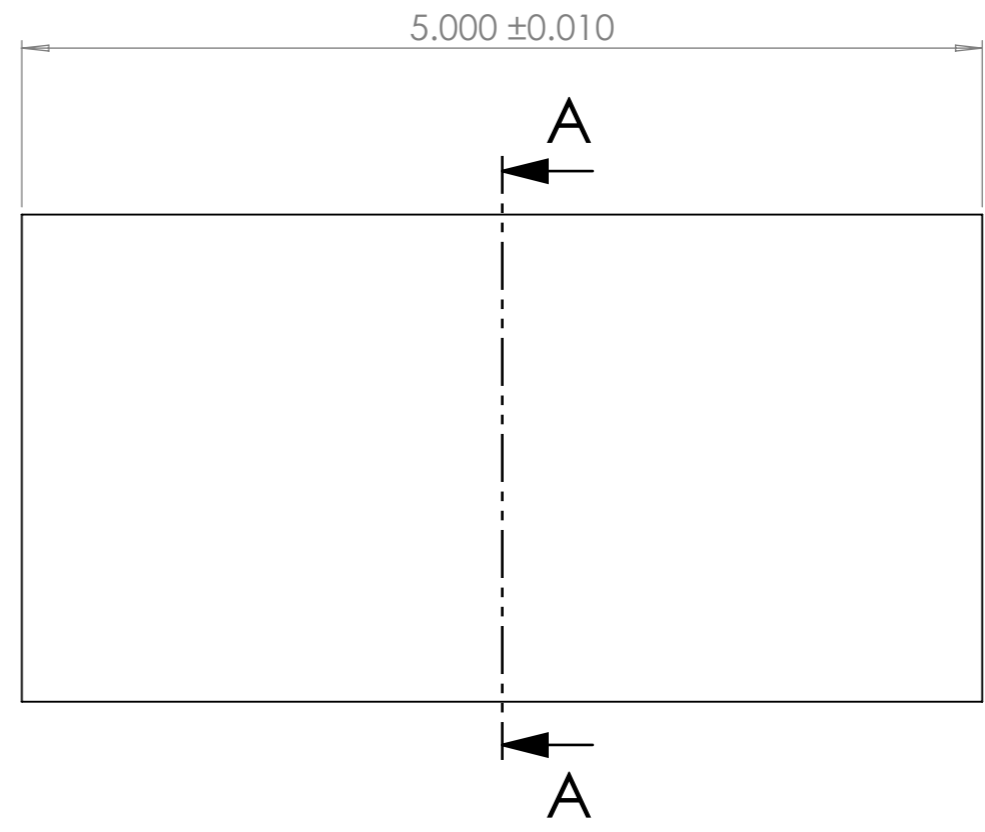
UNLESS OTHERWISE SPECIFIED: DIMENSIONS ARE IN MILLIMETERS				FINISH:		DEBURR AND BREAK SHARP EDGES		DO NOT SCALE DRAWING		REVISION	
SURFACE FINISH:											
TOLERANCES:											
LINEAR:											
ANGULAR:											
	NAME	SIGNATURE	DATE					TITLE:			
DRAWN	RLD		4/11/24								
CHK'D											
APPV'D											
MFG											
Q.A								MATERIAL:		DWG NO.	
								Phenolic Resin		75mm Liner	
								WEIGHT:		SCALE:1:5	
										SHEET 1 OF 1	
										A3	



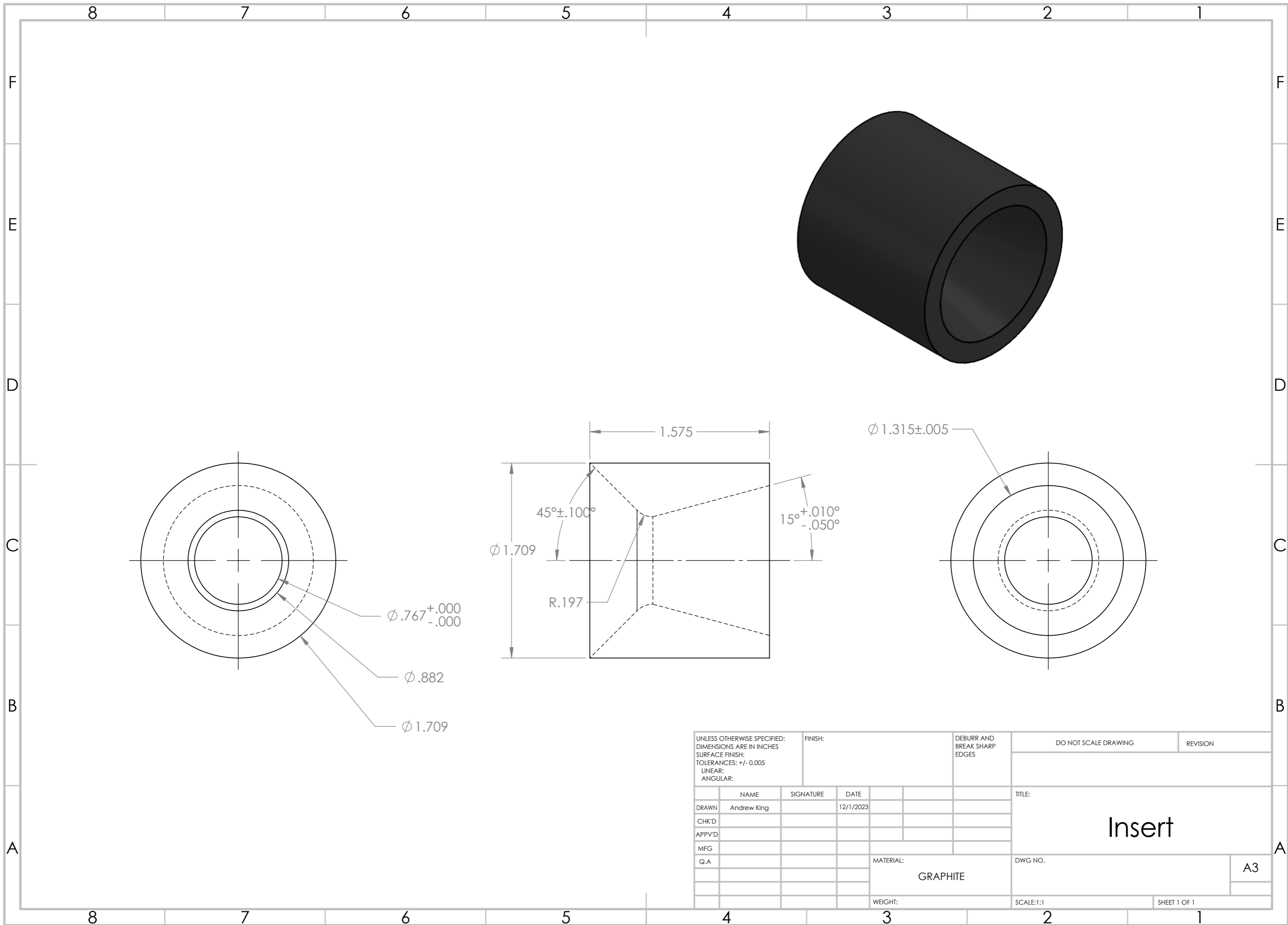
UNLESS OTHERWISE SPECIFIED: DIMENSIONS ARE IN MILLIMETERS				FINISH:		DEBURR AND BREAK SHARP EDGES		DO NOT SCALE DRAWING		REVISION	
SURFACE FINISH:											
TOLERANCES:											
LINEAR:											
ANGULAR:											
	NAME	SIGNATURE	DATE			TITLE: 75mm Casting Tube					
DRAWN	RLD		4/12/24								
CHK'D											
APPV'D											
MFG											
Q.A						MATERIAL:		DWG NO.		A3	
						WEIGHT:		SCALE:1:5		SHEET 1 OF 1	



SECTION A-A
SCALE 1 : 1



UNLESS OTHERWISE SPECIFIED: DIMENSIONS ARE IN MILLIMETERS SURFACE FINISH: TOLERANCES: LINEAR: ANGULAR:				FINISH:		DEBURR AND BREAK SHARP EDGES		DO NOT SCALE DRAWING		REVISION	
DRAWN				NAME		SIGNATURE		DATE		TITLE:	
CHK'D				RLD				4/12/24		Grain (76mm 4G)	
APPV'D											
MFG											
Q.A											
								MATERIAL:		DWG NO.	
								WEIGHT:		SCALE:1:2	
										SHEET 1 OF 1	
										A3	



$\phi .767^{+.000}_{-.000}$

$\phi .882$

$\phi 1.709$

$\phi 1.709$

$45^{\circ} \pm .100^{\circ}$

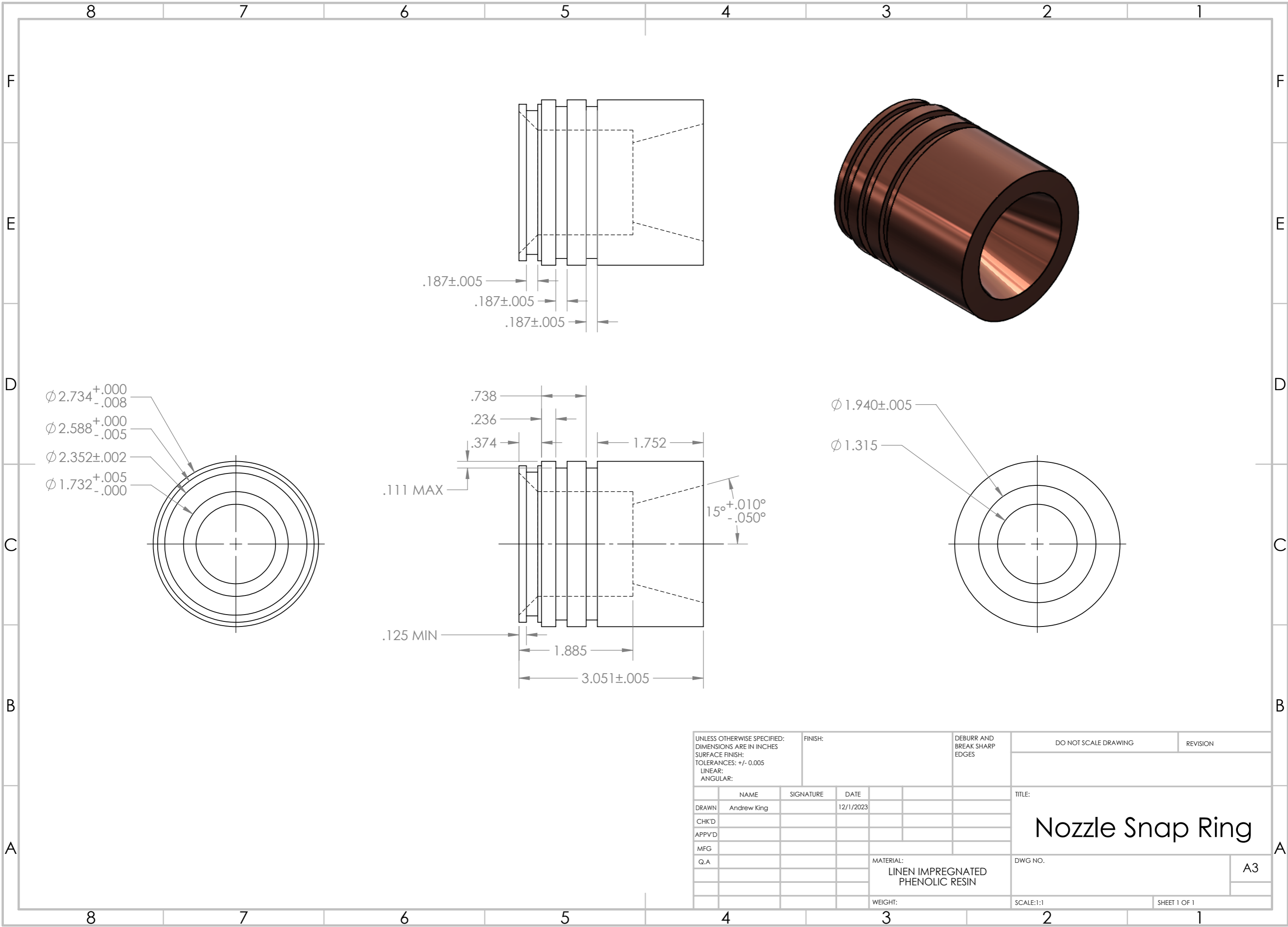
R.197

1.575

$15^{\circ} \pm .010^{\circ}_{-.050^{\circ}}$

$\phi 1.315 \pm .005$

UNLESS OTHERWISE SPECIFIED: DIMENSIONS ARE IN INCHES SURFACE FINISH: TOLERANCES: +/- 0.005 LINEAR: ANGULAR:				FINISH:		DEBURR AND BREAK SHARP EDGES		DO NOT SCALE DRAWING		REVISION	
DRAWN Andrew King				SIGNATURE		DATE 12/1/2023		TITLE: Insert			
CHK'D				APPV'D		MFG		Q.A		MATERIAL: GRAPHITE	
								DWG NO.		A3	
								WEIGHT:		SCALE:1:1	
										SHEET 1 OF 1	



UNLESS OTHERWISE SPECIFIED: DIMENSIONS ARE IN INCHES SURFACE FINISH: TOLERANCES: +/- 0.005 LINEAR: ANGULAR:				FINISH:		DEBURR AND BREAK SHARP EDGES		DO NOT SCALE DRAWING		REVISION	
DRAWN Andrew King				SIGNATURE		DATE 12/1/2023		TITLE: Nozzle Snap Ring			
CHK'D				APPV'D		MFG		Q.A		MATERIAL: LINEN IMPREGNATED PHENOLIC RESIN	
DWG NO.				SCALE:1:1		SHEET 1 OF 1		A3			