

Hardware Status Update 100%

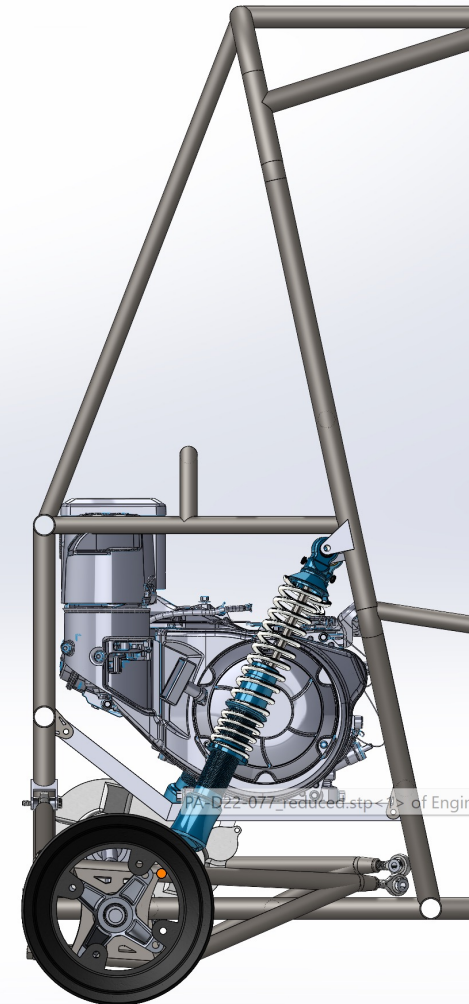
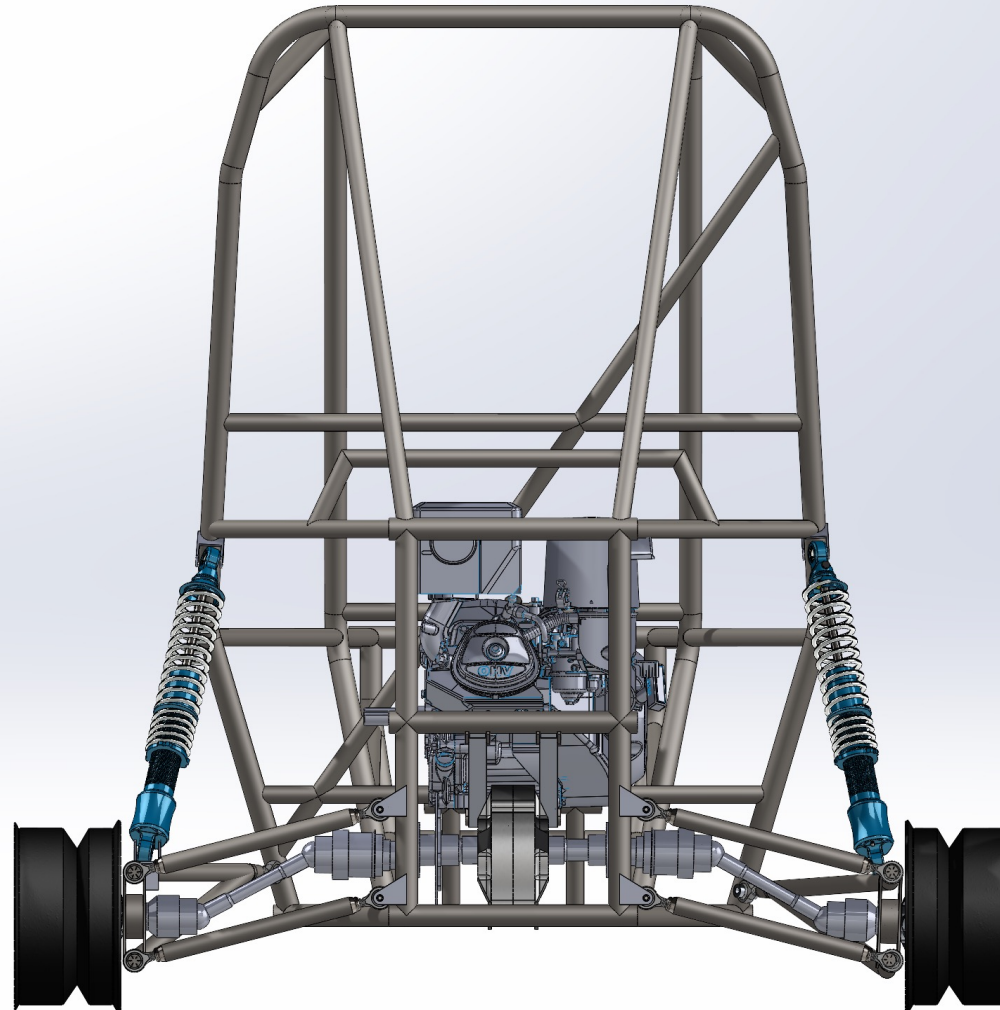
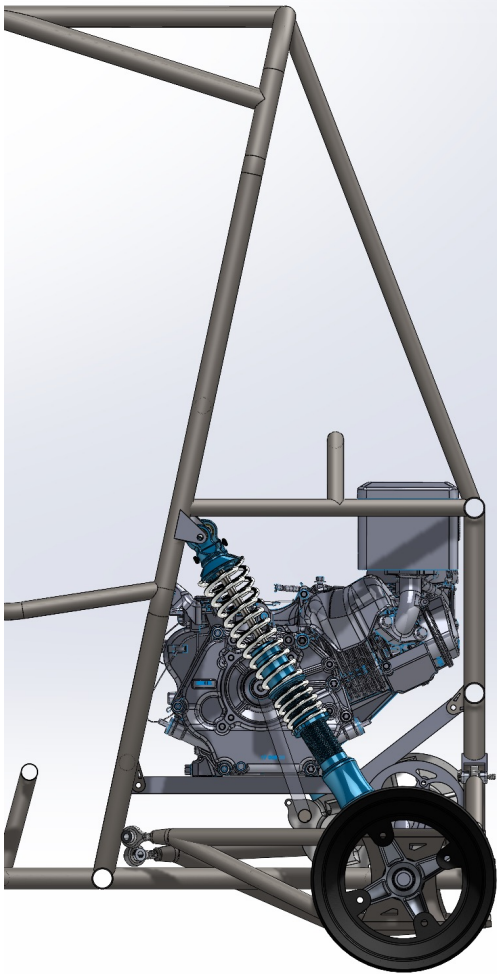
Northern Arizona University

NAU SAE Baja
Rear Suspension
Team #74

By: Robert Gerlinger, Tanner Bunch, Samuel Larios

Rear Suspension

Design Efforts



Rear Suspension

Key		
Item Already owned/in house (reused)	30	100.00%
Item Ordered	30	100.00%
Total Purchased		100.00%
Need to order (In Process)	0	0.00%
Running Total	1350.35	100.00%
Total Items Needed	30	Rear End Suspension

Rear Suspension											
No.	Part Name	Action Needed	Size/Dimensions	QTY	Price (Each)	Price (Total)	Link to Website	Part No. (From Website)	Manufacture	Primary Vendor	Secondary Vendor
1	Hubs (Aluminum)	None	See Cad File	3	0	0	N/A	N/A	Henry	N/A	N/A
2	Heims	None	1/2"-20 Thread	12	12.5	209.79	MI-LWw9pmT	60645K16	ceTech Titan	RaceTech Titanium	N/A
3	Steel Plates	None	5"x5" inches	4	0	0	w.advancedmeta	N/A	lvanced Met	Advanced Metals	N/A
4	Tie Rods	None	9" Length	4	0	0	w.advancedmeta	CMR1065	lvanced Met	Advanced Metals	N/A
5	Shocks	None	N/A	4	0	0	N/A	N/A	AFCO	AFCO	N/A
6	Shock Mounts	None	Reference CAD File	4	0	0	N/A	N/A	Machine Sho	Machine Shop	N/A
7	Tie Rod Mounts	None	Reference CAD File	8	0	0	N/A	N/A	Machine Sho	Machine Shop	N/A
8	Brake Caliper/With pads	None	See Website	1	139.99	139.99	acing.com/HBS-F	366-050	Hyperracing	HBS	N/A
9	Brake Rotor	None	Reference CAD File	2	0	0	N/A	N/A	Machine Sho	Machine Shop	N/A
10	Control Arms	None	Reference CAD File	2	0	0	v.industrialmetals	4130RDT12506	ustrial Met	Industrial Metals	N/A
11	Shock Bolts	None	2" 5/16 ID	6	0	0	N/A	N/A	N/A	N/A	N/A
12	Shock Nuts	None	.25 ID	6	0	0	N/A	N/A	N/A	N/A	N/A
13	Heim Nuts	None	1/2" D 20 thread	12	4.86	58.32		RT65009	ceTech Titan	RaceTech Titanium	N/A
14	Heim Bolts	None	1/2" D 20 thread	8	0	0	N/A	TBD	ceTech Titan	RaceTech Titanium	N/A
15	Wheel Studs	None	3/8"	8	0	0	N/A	TBD	N/A	N/A	N/A
16	Lug Nuts	None	3/8"	8	0	0	N/A	TBD	N/A	N/A	N/A
17	Hub Bearings	None	OD 2.165"	4	0	0	ps://www.skf.com	6006 -2RS1	SKF	SKF	N/A
18	Axle Nuts	None			0	0		TBD	GO AZ	Go AZ	N/A
19	Heim Spacers	None	Reference CAD File	20	0	0	N/A	N/A	N/A	N/A	N/A
20	Brake Mount	None	Reference CAD File	1	0	0	N/A	N/A	Machine Sho	Machine Shop	N/A
21	Brake Mount Bolts	None	3/8" OD 1.5" Length	2	0	0	N/A	N/A	N/A	N/A	N/A
22	Axles	None		2	150	300		TBD	GO AZ	Go AZ	N/A
23	Shock Tabs	None	Reference CAD File	8	0	0	N/A	N/A	Machine Sho	Machine Shop	N/A
24	Heim Bolts(In control arm	None	2"Length 1/2" OD	4	0	0	N/A	N/A	N/A	N/A	N/A
25	2" Partially threaded bo	None	2-20 thread partially threaded bo	10	2.724	27.24	x-cap-screws-par	UPC:842176164632	Fastener	Fastener	N/A
26	Classic MX transponder	None	N/A	1	122	122	ping Cart (mylaps	TR2 MX	Laps Speed I	MyLaps	N/A
27	Dzus Fasters(hardware)	None	N/A	1	153.03	153.03	s://www.aa-mfg.c	Several Check link	A Manufactu	aa-mfg	N/A
28	Frame Paint	None	N/A	5		0					
29	Helmet	None	small and medium size helmets	2	169.99	339.98	d-v-23-helmet-bl	0628-163	ONeal	Oneal	N/A
30	Head Rest Material	None	N/A	1	0	0	N/A	N/A	N/A	N/A	N/A

Purchasing Plan

Rear Suspension

Manufacturing Plan

Importance	Part	Number of parts	Who	Time to manufacture/ part (hr)	Total times (hr)	Percent of time	Total # of parts manufactured	Percent of parts Built	Percent of total build	Raw Material	Location	Material on hand	Status
CNC													
1	Rear Hubs	3	Henry	5	15	23.95%	3	100.00%	23.95%	6061 T6	Machine shop	Yes	on hand/ finished
Plasma Cutter													
1	Housing plates	4	Tanner	0.033	0.133	0.21%	4	100.00%	0.21%	4130	Family shop	Yes	on hand/ finished
Fab													
1	Right/ left upper control arm	2	Tanner	0.5	1	1.60%	2	100.00%	1.60%	4130	Family shop	yes	on hand/ finished
2	Head rest	1	Team	2	2	3.19%	1	100.00%	3.19%	wood/foam	Machine shop	Yes	on hand/ finished
3	Seat	1	Team	3	3	4.79%	1	100.00%	4.79%	Carbon fiber	Machine shop	Yes	on hand/ finished
4	Rear tow hitch	1	Team	0.5	0.5	0.80%	1	100.00%	0.80%	4130	Machine shop	Yes	on hand/ finished
5	Tow hitch mounts	2	Team	0.25	0.5	0.80%	0	0.00%	0.00%	4130	Machine shop	Yes	Not made
6	Fuel Splash guard	1	Team	1	1	1.60%	0.7	70.00%	2.28%	6061 T6	Machine shop	Yes	Made but needs modification to be installed
7	Shock mount	2	Team	1	2	3.19%	2	100.00%	3.19%	4130	Machine shop	Yes	on hand/ finished
8	Body panels	8	Team	2	16	25.55%	6	75.00%	19.16%	Carbon fiber	Machine shop	Yes	Molds made and 75% of carbon panels made
9	Right/left lower control arm	2	Tanner	0.5	1	1.60%	2	100.00%	1.60%	4130	Family shop	Yes	on hand/ finished
10	Control arm/lateral link/Shock mounts	10	Samuel	0.5	5	7.98%	10	100.00%	7.98%	4130	Machine shop	yes	on hand/ finished
Lathe													
1	Lateral link	4	Robert	0.75	3	4.79%	4	100.00%	4.79%	4130	Machine shop	Yes	on hand/ finished
2	Lateral link inserts	8	Robert	0.5	4	6.39%	8	100.00%	6.39%	4130	Machine shop	Yes	on hand/ finished
3	Control arm bearing housing	2	Travis	3	6	9.58%	2	100.00%	9.58%	4130	Machine shop	Yes	on hand/ finished
4	Heim spacers	10	Robert	0.25	2.5	3.99%	10	100.00%	3.99%	6061 T6	Machine shop	yes	on hand/ finished
					Total hours=	62.633	100.00%	Total Percent Build=	93.50%				
					Rear suspension Parts =				100.00%				

Rear Suspension

Demonstration



Rear Suspension

Gantt Chart

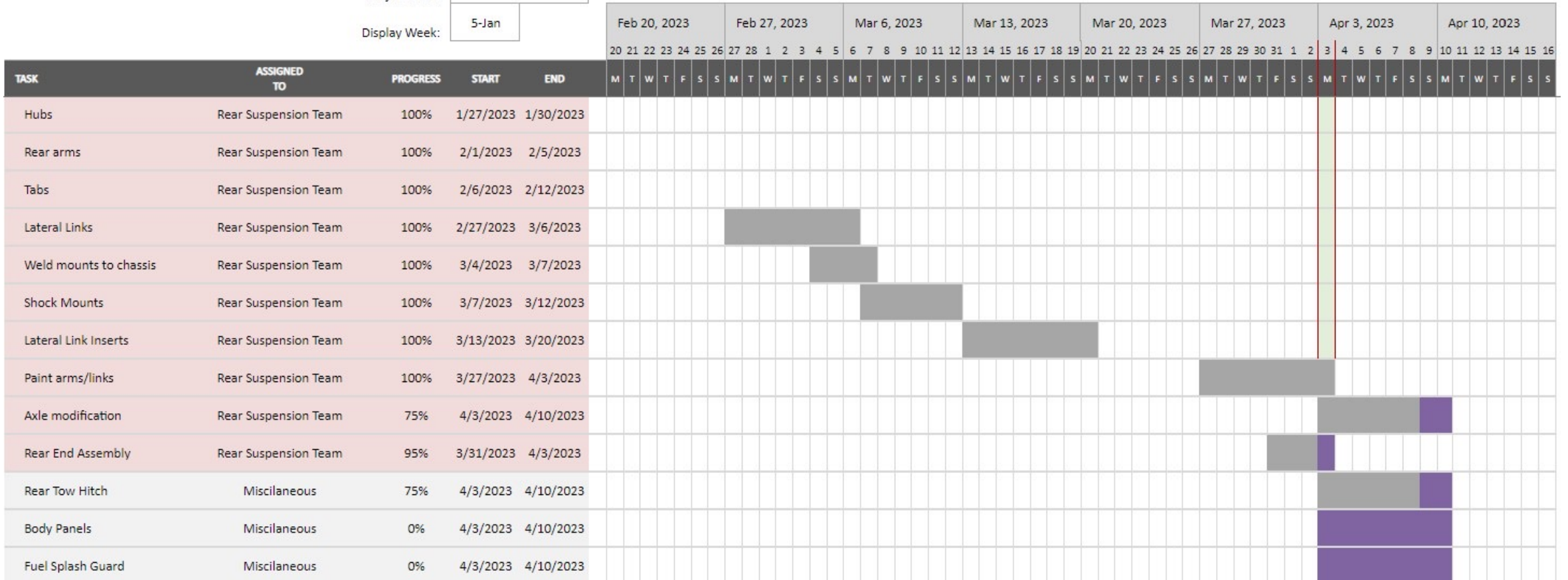
Rear Suspension Gantt Chart

Lumberjacks Motorsports
Project Lead

SIMPLE GANTT CHART by Vertex42.com
<https://www.vertex42.com/ExcelTemplates/simple-gantt-chart.html>

Project Start:

Display Week:



Questions?

