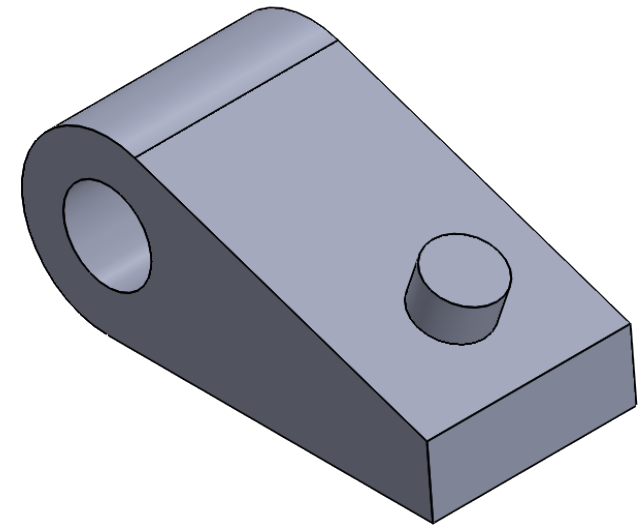
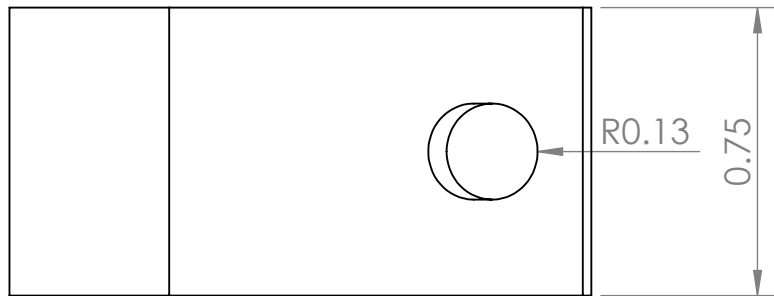
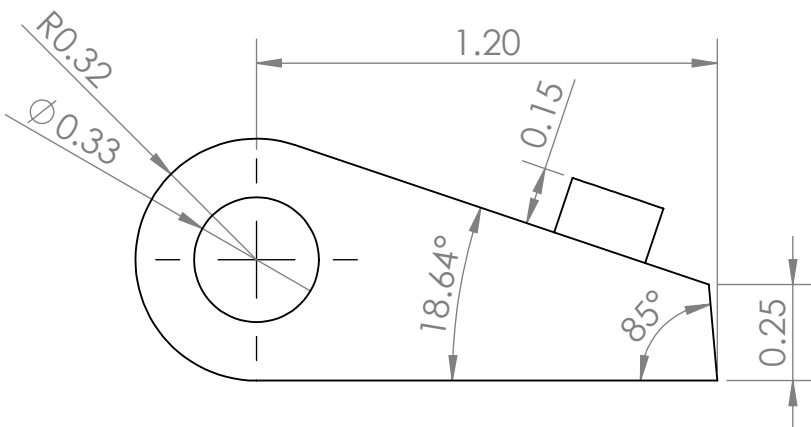


B



B

A



A

NOTES:  
NONE

CHECKED BY : JOSH GLENN

UNLESS OTHERWISE SPECIFIED:

DIMENSIONS ARE IN INCHES  
TOLERANCES:  $\pm .05$  INCHES

MATERIAL: POLYLACTIC ACID  
PLASTIC

FINISH: 3D PRINTED

DO NOT SCALE DRAWING

DRAWN BY:

JONATHAN WALGREN

PART NAME:

RATCHET TOOTH

SCALE: 2:1

WEIGHT: .02 LBS

SHEET 16 OF 28