

SAE Baja Design Mid-point Presentation Team Drivetrain

By
Abdulrahman Almuflih, Andrew Perryman,
Caizhi Ming, Zan Zhu, Ruoheng Pan

Overview

- Introduction
- Parts Order Status
- Parts completed
 - Engine Mount
- Parts to be assembled or made
 - Reshape CVT output pulley
 - Throttle cable
 - Shifter
 - Drip pan and CVT guard
- Project plan
 - Gantt Chart
- Conclusions
- More pictures

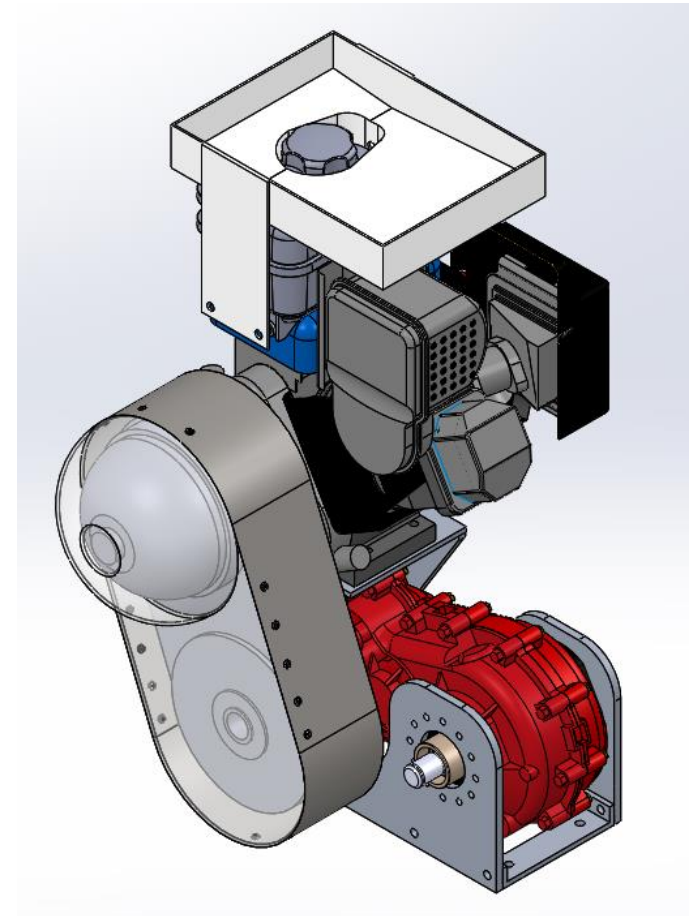
Introduction

Sponsored by SAE

- Project Description: Design and build Baja vehicle
- The Baja competition project in NAU:
 - Frame design
 - Suspension design
 - Drive-train design

For drive-train design:

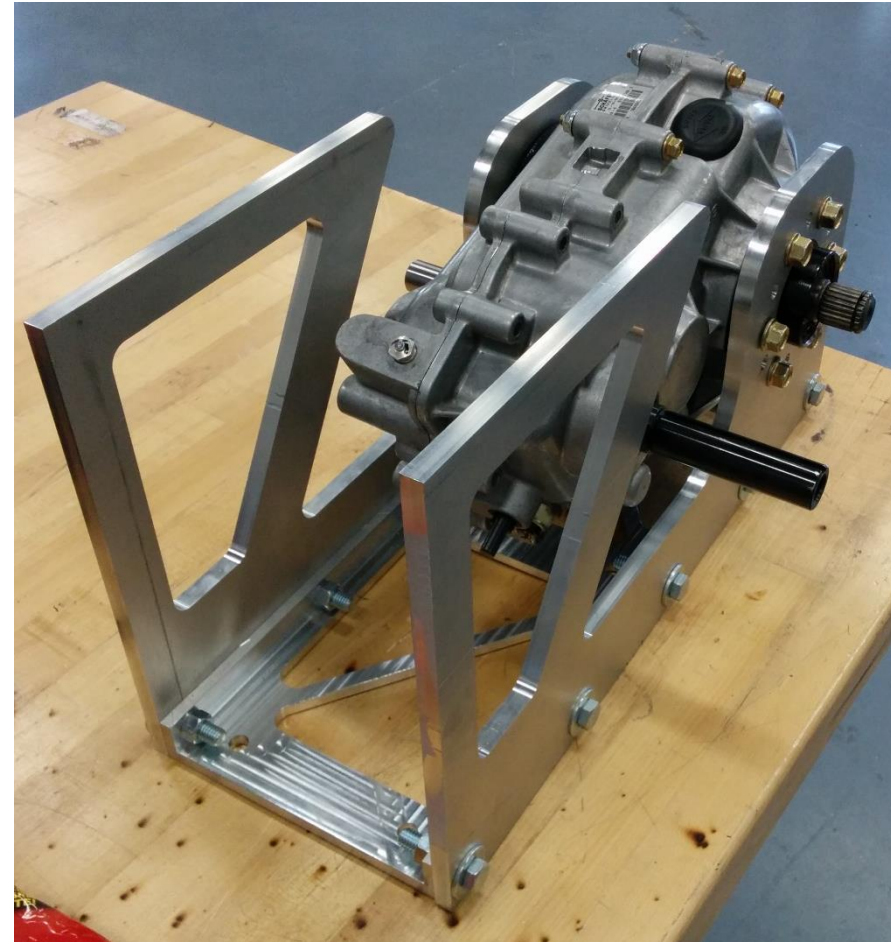
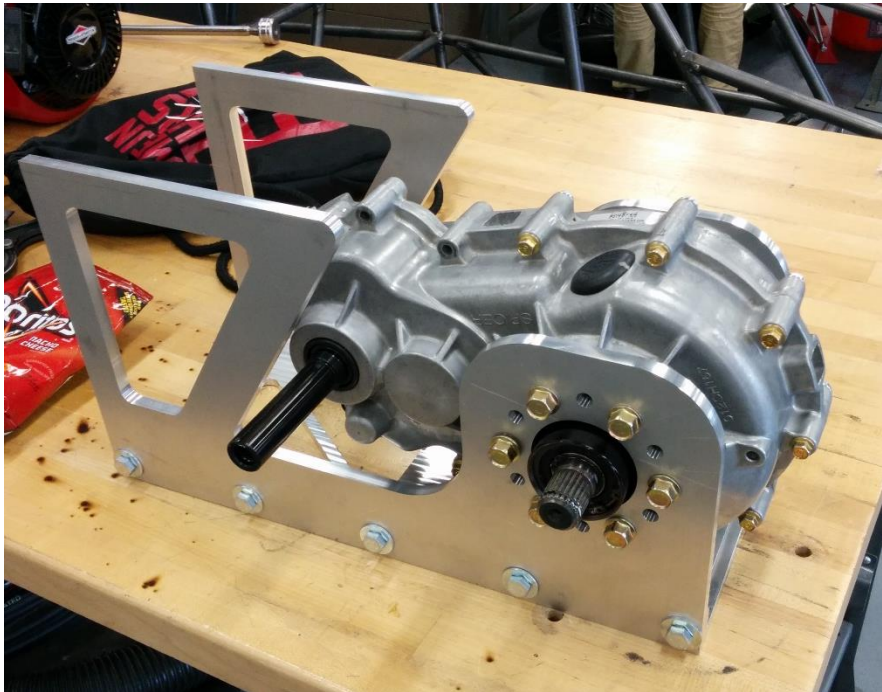
- Our team aims to build the drive-train and assemble it along with the engine so that the Baja vehicle can achieve all of the competition events.



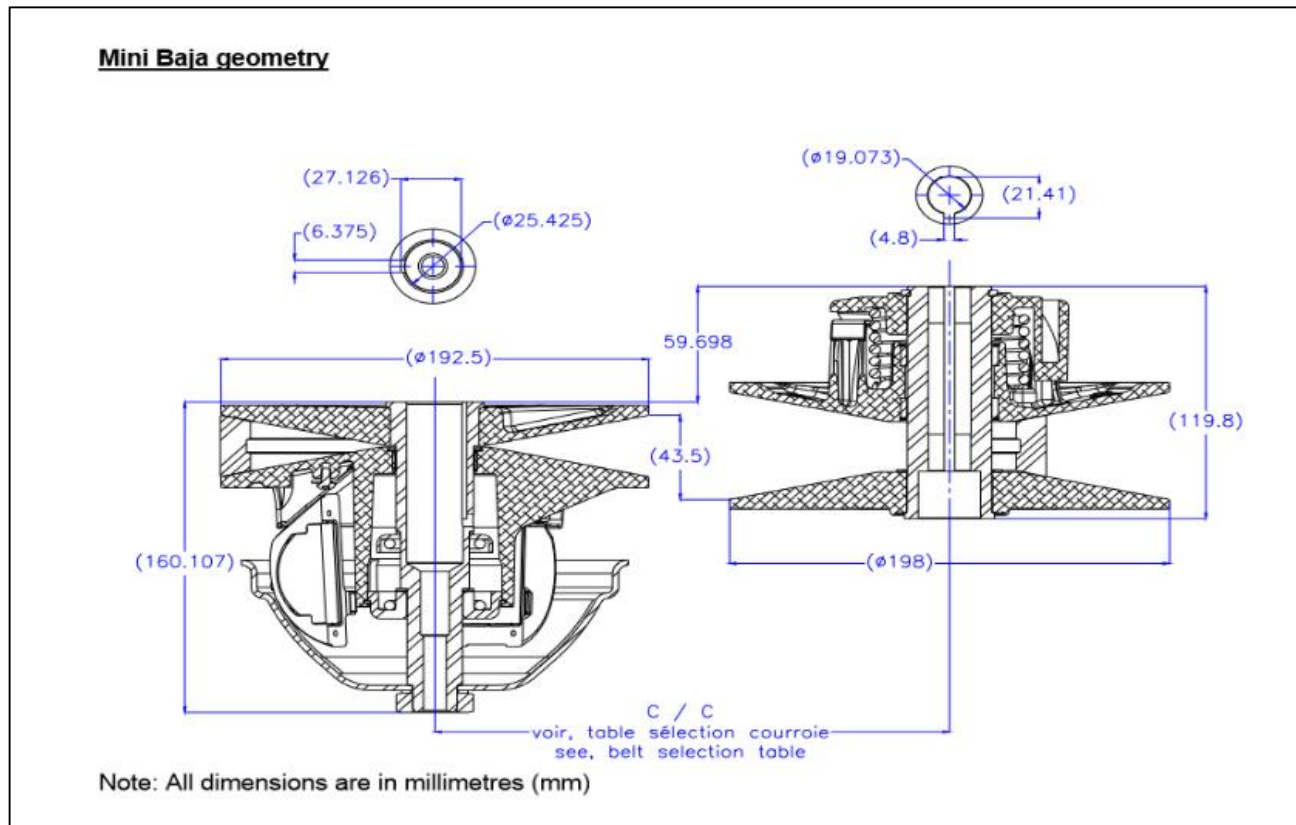
Parts Order Status

Ordered Parts	Quantity	Status
Engine	1	Arrived
Differential	1	Arrived
CVT	1	Arrived
Shaft	2	Arrived
Key	4	Arrived

Engine Mount



Reshape CVT output pulley



Throttle Cable Parts



- Ball Joint



- Cable Stop



- Throttle Cable



- 90° Elbow

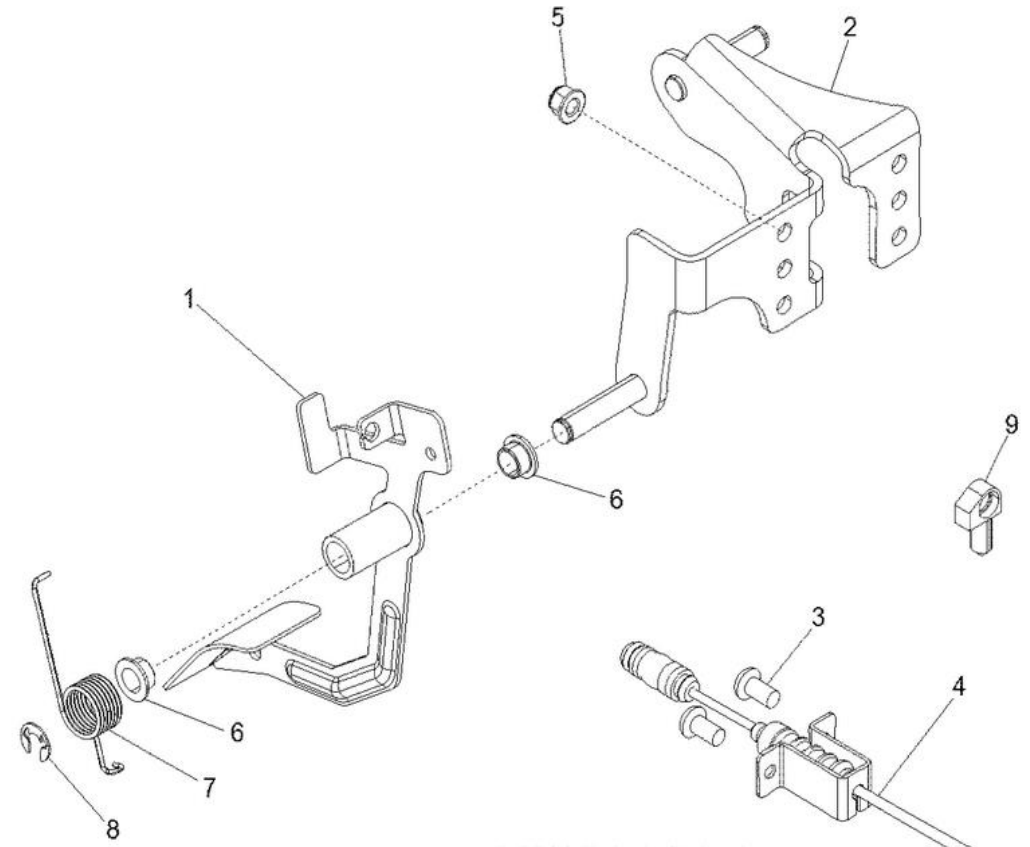
Throttle Cable Detail

- 96 inches in length
- Runs along the floor board
- Provided by Control Cables Inc.

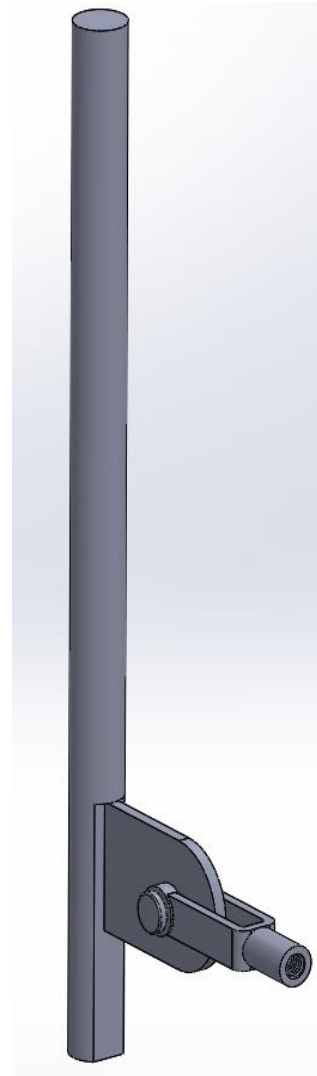
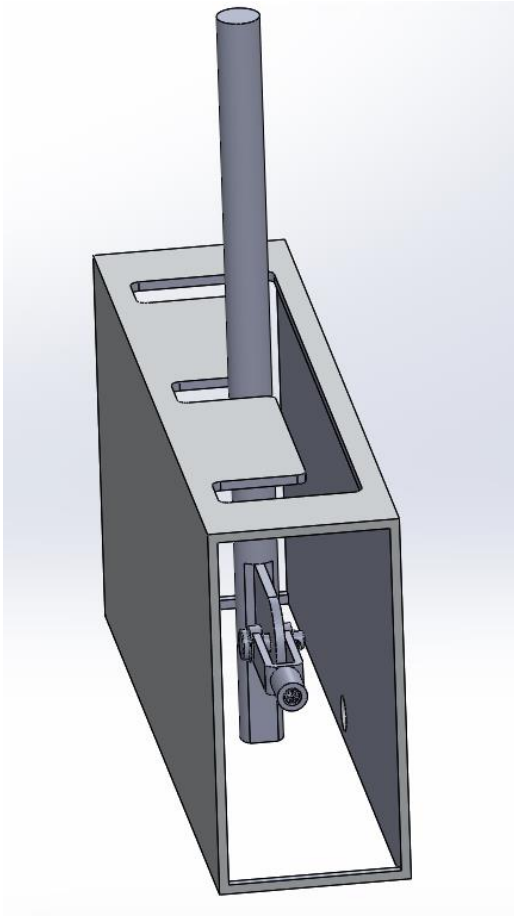


Gas Pedal

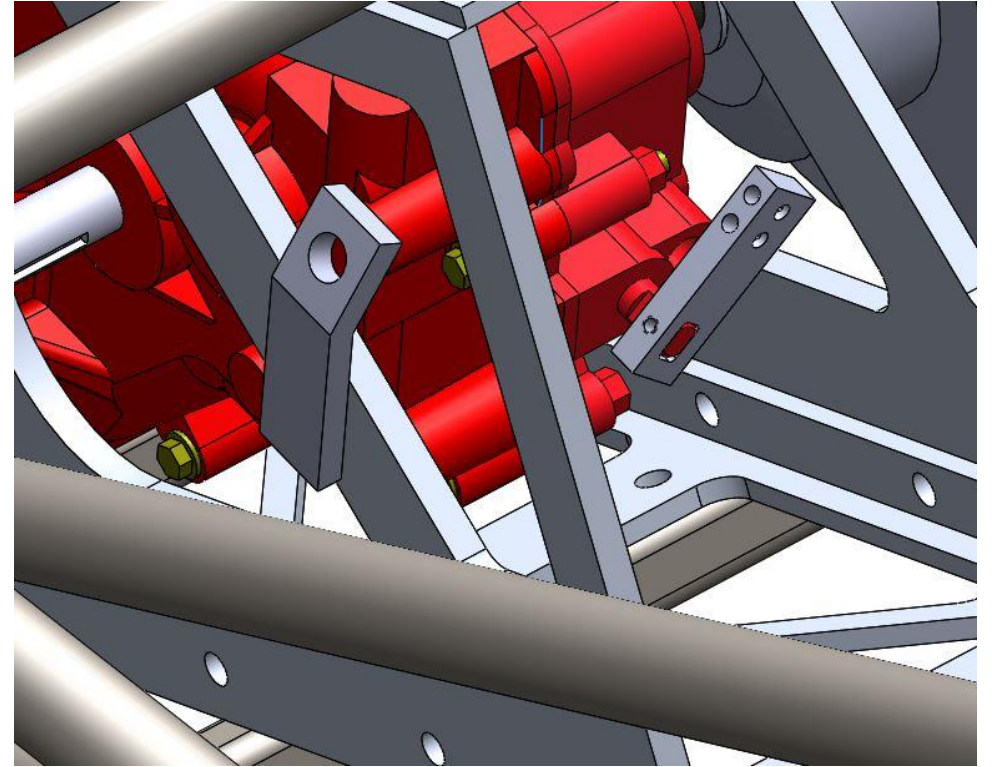
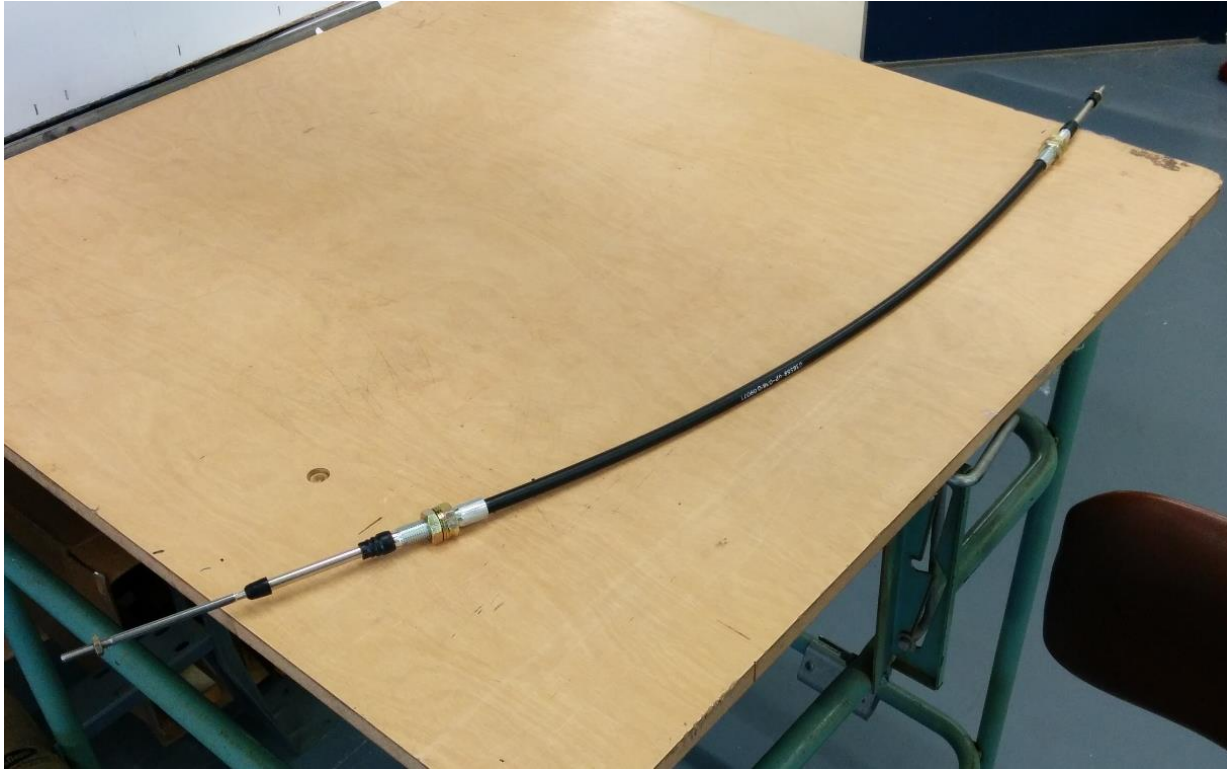
- Designed for Polaris RZR 900 XP
- Complete throttle and brake cluster
- Selected to fit our throttle cable design specifically
- Unfortunately...



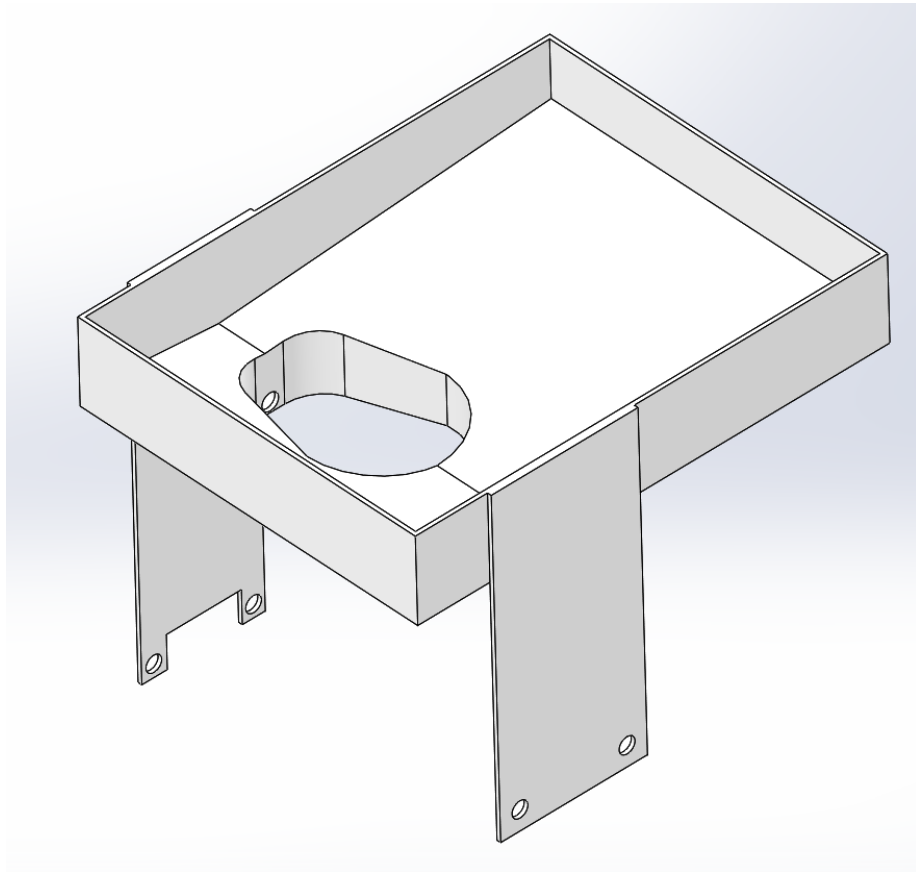
Shifter Box



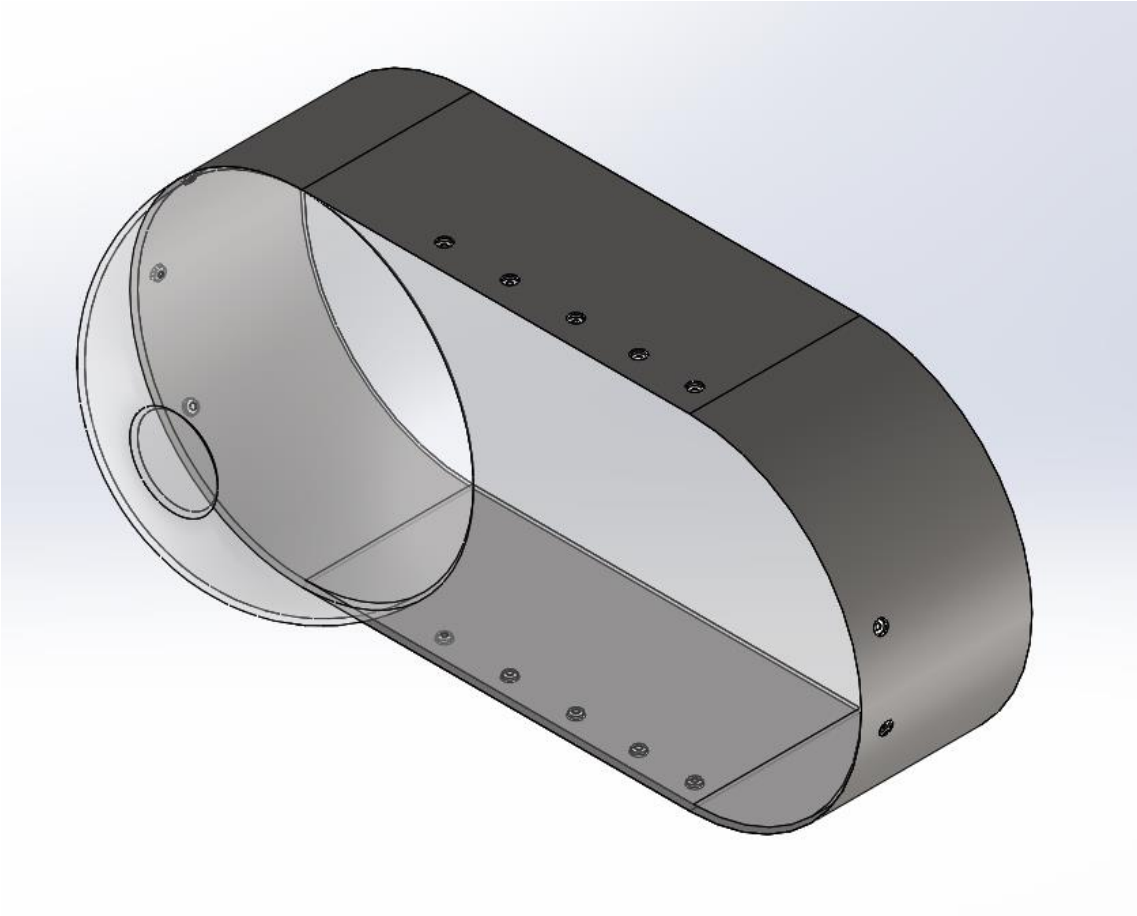
Shifter Cable and Connection



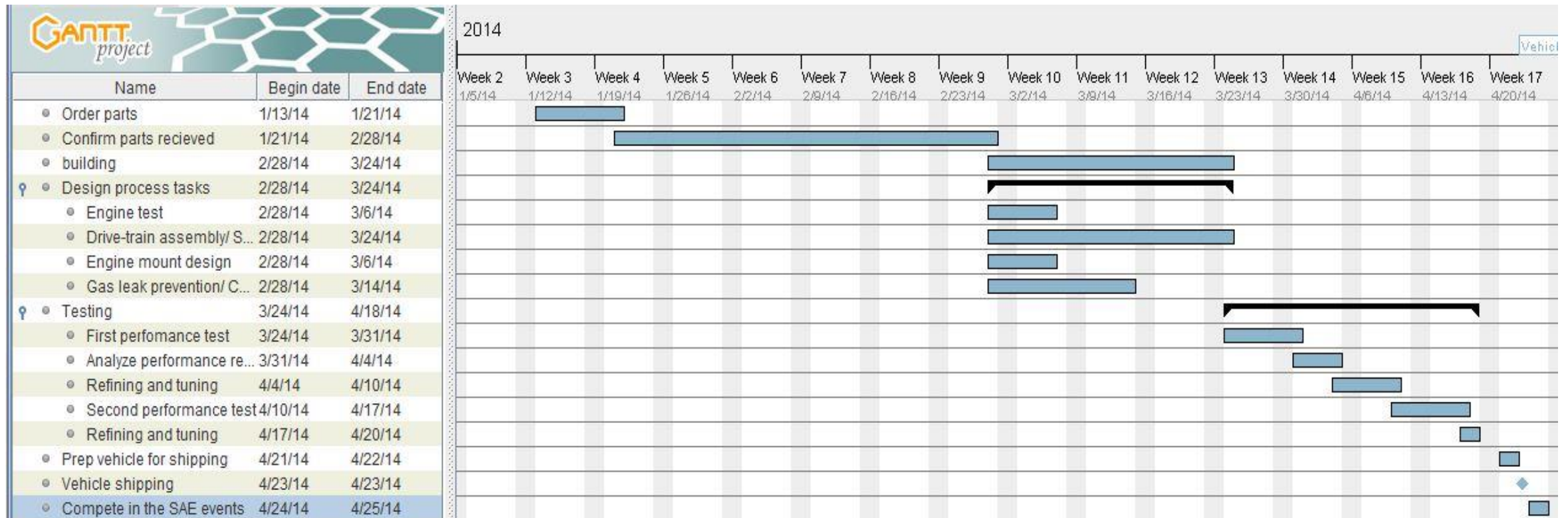
Drip Pan



CVT Guard



Project Plan- Spring 2014



Conclusion

For drive-train design progress:

- Our team has confirmed that all the ordered parts have been received.
- All design process have been completed including CAD drawing and all that left is building or assembling the system.
- Some of the parts received needs to be modified to fit our design.
- We expect to be able to follow the project plan to finish all of the tasks in a timely manner.

More Pictures



More Pictures

