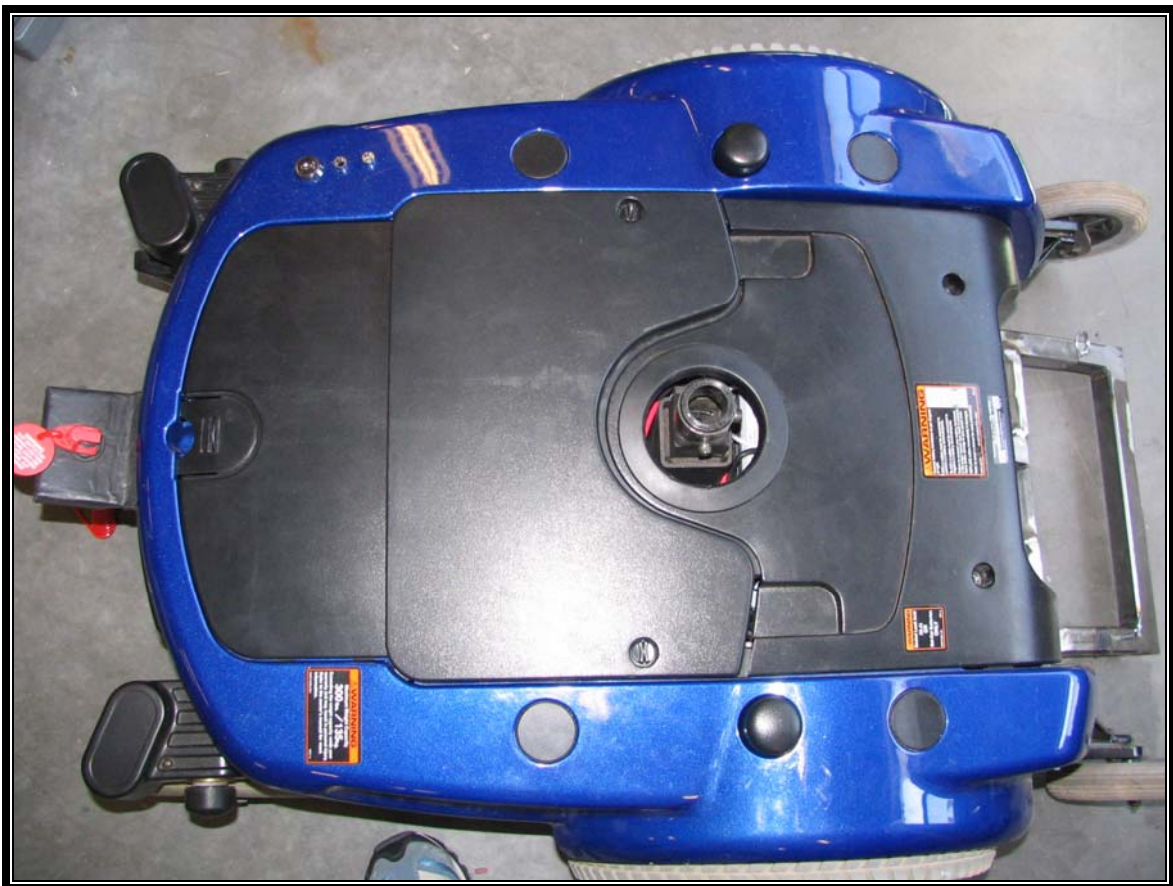


# Jazzy 1122 Wheelchair Trainer: Owner's Manual



## KEYED IGNITION

The keyed Ignition allows for more control and safety over your wheelchair trainer. With the trainer being inoperable without the key engaged you will be in full control of this system

To operate keyed ignition:

1. Insert key into ignition slot, see Figure 1 on the right
2. Turn 90 degrees to the right until green light indicator turns on, see Figure 2 on the right
3. To turn off, turn 90 degrees to the left until green light indicator turns off.

**WARNING: Key should not be removed when operating in motion. Key can only be removed in the OFF position**



Figure 1



Figure 2

## EMERGENCY KILL SWITCH

The emergency kill switch allows the aid control external control over the trainer. By attaching the cord of the kill switch to the body of the attending aid, they will be able to instantaneously slow down and stop the trainer in the case of an emergency. This device cuts power to the motors when pulled.

To operate emergency kill switch:

1. Inserting: To insert kill switch, hold three prong connector with large prong on top and two smaller prongs on bottom.
2. At an angle, push button on trainer down with connector and slide into place. See Figure 1.
3. Disengaging: To stop trainer in motion, pull on the tether cord until connector un-attaches from trainer. See Figure 2.
4. When disengaged blinking red light near keyed ignition will be visible. See Figure 3.



Figure 1

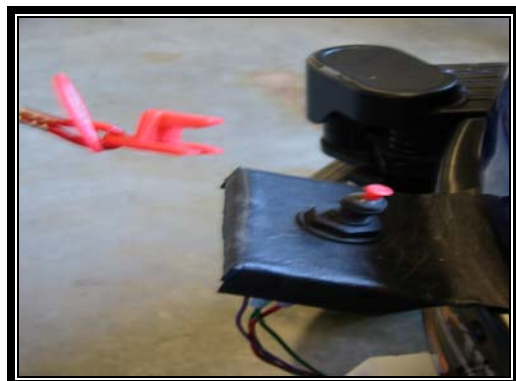


Figure 2

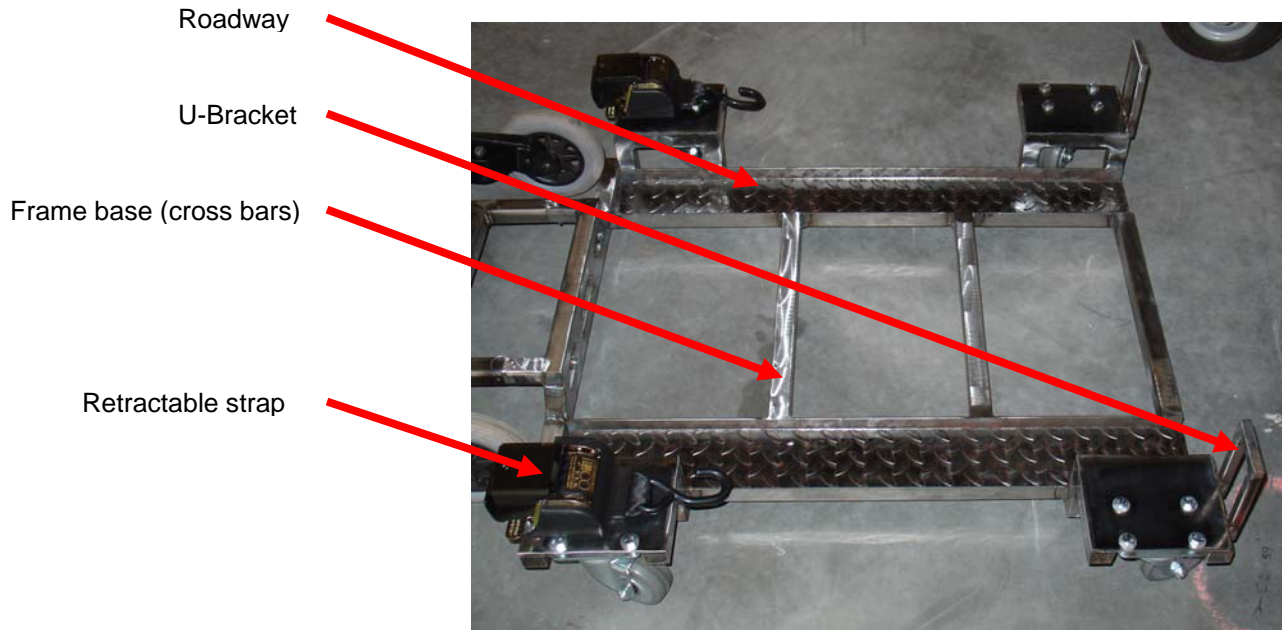
**WARNING: Emergency Kill Switch should always be engaged unless in the case of an emergency. Leave attached when not in use, blinking red indicator will tell blink with or without keyed ignition.**



Figure 3

# Wheelchair Trainer Base

## Parts Description



## BASE CONNECTION

The Jazzy 1122 base and the wheelchair trainer base can be reconnected for operation.

### Attaching wheelchair base:

1. Turn the power off.
2. Make sure Jazzy 1122 has the power drive engaged (i.e. Not in freewheel mode).
3. Align the wheelchair base mount to the custom mount of the Jazzy1122, see figure 1.
4. Insert cotter pin to connect Jazzy 1122 to wheelchair base, see figure 2.
5. Connect plug into the controller, see figure 3.
6. Wheelchair trainer is ready to operate.

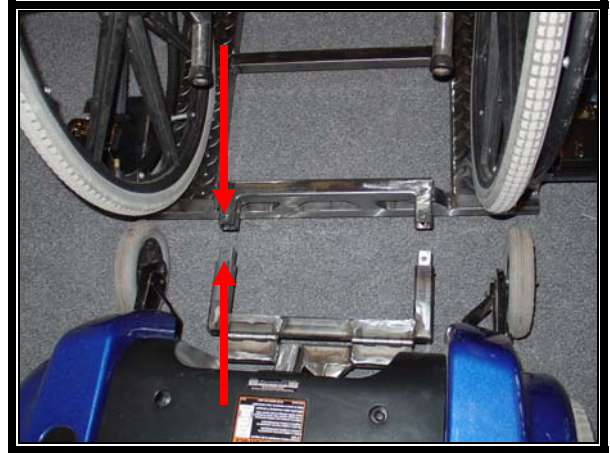


Figure 1

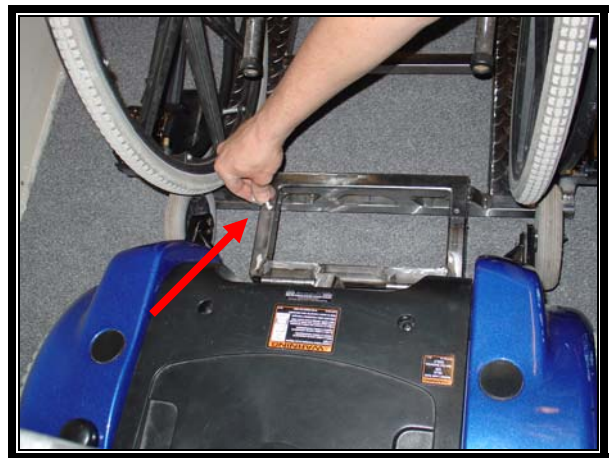


Figure 2



Figure 3

## BASE REMOVAL

The wheelchair base may be removed from the Jazzy 1122 base for elevator access.

To remove wheelchair base

1. Turn the power off.
2. Make sure Jazzy 1122 has the power drive disengaged (i.e. in freewheel mode).
3. Disconnect powered base from controller joystick, see figure 1.
4. Remove both cotter pins from mount, see figure 2.



Figure 1

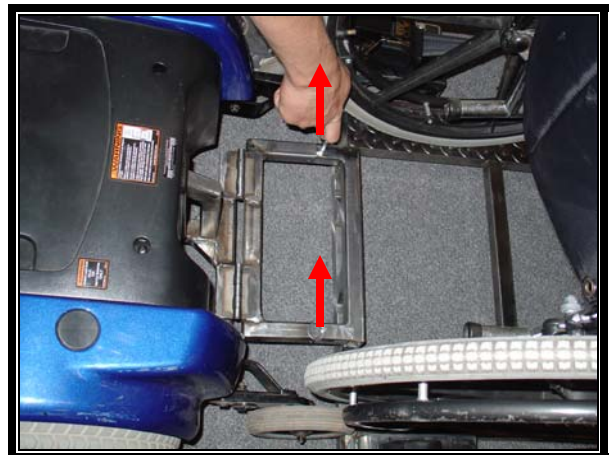
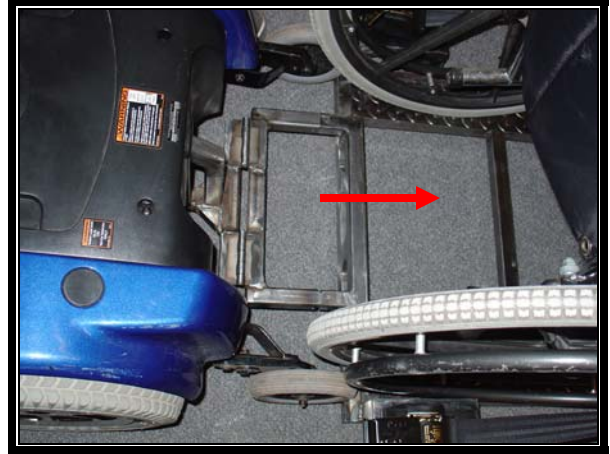


Figure 2

5. Move wheelchair trainer forward to remove, see figure 3 and 4.
6. The Jazzy 1122 base can now be maneuvered by the controller, see figure 5.



**Figure 3**



**Figure 4**



**Figure 5**

## SECURE WHEELCHAIR TO WHEELCHAIR BASE

For the safety of wheelchair occupant the wheelchair must be fully constrained to the wheelchair base.

To secure wheelchair:

1. Turn the power off.
2. Make sure Jazzy 1122 has the power drive engaged (i.e. Not in freewheel mode).
3. Fasten hook and loop fastener strap to right I bar (on the wheelchair) and the right U-bracket (on wheelchair base) located near the front wheels, see figure 2.
4. Repeat step 3, for the left side.
5. Press release button on retractable tie down strap to release hook, figure 3.



Figure 1



Figure 2



Figure 3



6. Hook right retractable tie downs to the frame on the right side of occupant's wheelchair, see figure 4.

7. Manually tighten retractable tie downs, see figure 5.

**CAUTION: DO NOT OVER TIGHTEN**

8. Make sure there is enough tension on strap, see figure 6.

9. Repeat step 5-8, for the left side.

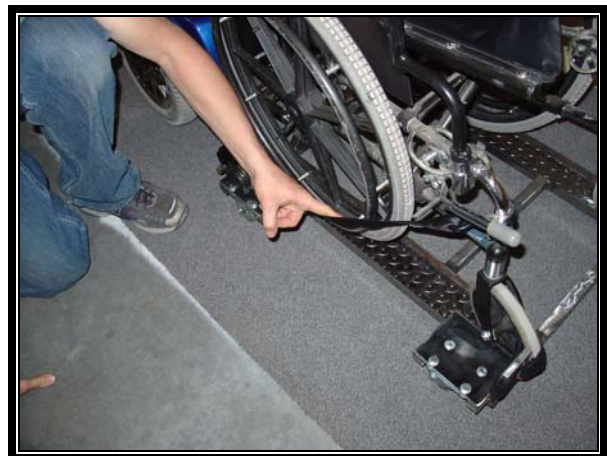
10. Check that chair is completely secure



**Figure 4**



**Figure 5**



**Figure 6**

11. The chair is now completely secured, figure 7.



**Figure 7**

## LOAD WHEELCHAIR BASE

Load the occupant onto the wheelchair trainer base for operation mode.

To load occupant onto base:

1. Turn the power off.
2. Make sure Jazzy 1122 is connected to wheelchair base for easier loading. See section on base connection.
3. Ensure the power drive is engaged on the Jazzy 1122 (i.e. Not in freewheel mode).
4. Align Wheelchair base and occupants wheelchair in a straight line, see figure 1.
5. Put one foot between frame of base and roll wheelchair base along the roadway of the wheelchair trainer, see figure 1.  
**CAUTION: Do not step on frame of wheelchair base.**
6. Grasp handle of occupants wheelchair, see figure 2.



Figure 1



Figure 2

7. Gently roll occupied wheelchair up onto the base lifting the rear wheels and then the front wheels onto the roadway.



**Figure 3**



**Figure 4**

## UNLOADING WHEELCHAIR

When unloading the wheelchair from the wheelchair trainer base, safety must be considered.

To unload occupant from wheelchair base:

1. Turn the power off.
2. Make sure Jazzy 1122 has the power drive engaged (i.e. Not in freewheel mode).
3. Press release button on retractable tie down to loosen strap, figure 1.
4. Remove hook from wheelchair frame.
5. Repeat steps 3 and 4 for other side of wheelchair base



Figure 1

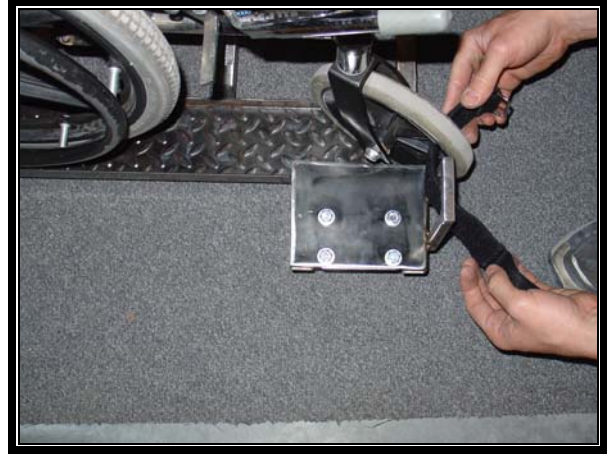


Figure 2



Figure 3

6. While holding occupied wheelchair, unfasten hook and loop strap from U-bracket and I bar near the front wheels, see figure 4.
7. Carefully push wheelchair forward using occupant's wheelchair handles slowly until wheelchair is fully rested on floor.



**Figure 4**



**Figure 5**



**Figure 6**

## CONVERT TO JAZZY 1122

The wheelchair trainer base can be converted back to a Jazzy 1122 power wheelchair as needed.

To make conversion to a Jazzy:

1. Turn the power off.
2. Open electrical compartment shroud, see figure 1.
3. Remove control harness plug, see figure 2.
4. Remove controller joystick from mount and tread controller cable through controller mount holder, see figure 3.



Figure 1

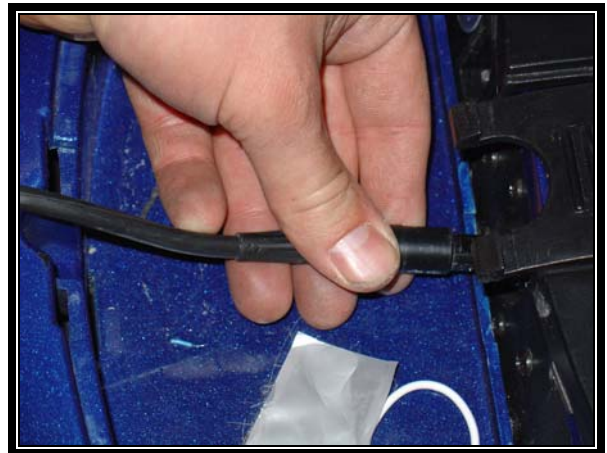


Figure 2



Figure 3

5. Remove control mount by a thumb screw at the base of the mount, see figure 4 and 5.
6. Remove wheelchair base as per base removal instructions, see figure 6.



**Figure 4**



**Figure 5**



**Figure 6**



7. Remove shroud, by removing the two screws located on the top front of the black panel. Lift the shroud, see figure 7.

8. Remove cotter pin connecting the mount to the powered base, see figure 8.

9. Lift wheelchair base mount and remove, see figure 9.



**Figure 7**



**Figure 8**

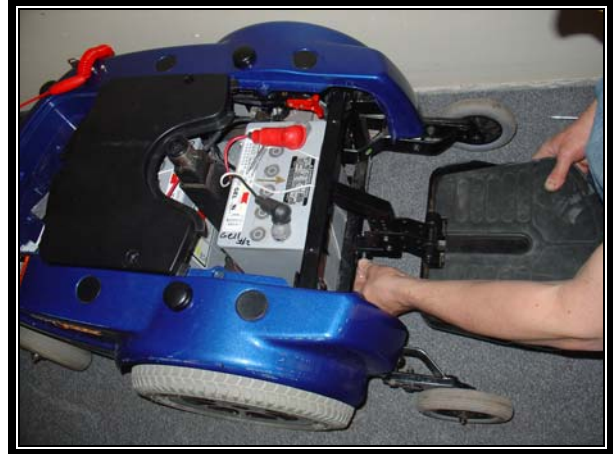


**Figure 9**

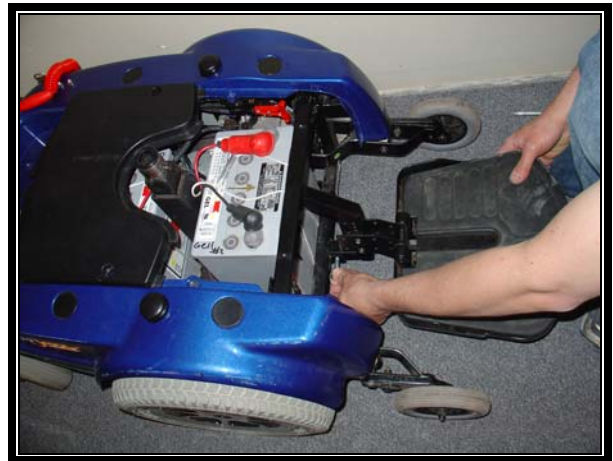
10. Replace footrest/footrest mount to Jazzy 1122 base, see figure 10 and 11.

11. Replace shroud and two screws.

12. Assemble the controller and seat following the Jazzy 1122 owner's manual, section IV.



**Figure 10**



**Figure 11**



**Figure 12**

13. Conversion completed, see figure 14.



**Figure 13**



**Figure 14**

## STORE WHEELCHAIR TRAINER BASE

When the Wheelchair trainer is not in use the base can be stored easily.

To store wheelchair trainer base:

1. Turn the power off.
2. Make sure Jazzy 1122 power drive is disengaged (i.e. in freewheel mode).
3. Make sure the base of the Jazzy 1122 and the wheelchair base are connected securely. See base connection section.
4. Lift front of the wheelchair base and use this as a handle to maneuver the Jazzy 1122 to a proper storage location, see figure 1 and 2.
5. For additional safety, engage the Jazzy 1122 powered drive (i.e. Not in freewheel mode).
6. The wheelchair trainer can now be stored until needed, by leaning the wheelchair base against the Jazzy 1122 base, see figure 3.
7. Secure wheelchair base to control bar using long hook and loop fastener.

**CAUTION: Do not over tighten strap.**



**Figure 1**



**Figure 2**



**Figure 3**

## Installation of the IR Communication Device

The IR Communication Device allows use of the IR Devices such a Dynavox.

Tools: None.

To install the IR Communication Device:

**WARNING: Installing the Communication Device the whole unit should be OFF.**

1. Power OFF from Joystick
2. Place key ignition to the OFF position.
3. Snap the Power connector, see figure 1.
4. Connect the green RC connector to the green label, see figure 2.
5. Connect both red and blue RC jacks to the appropriate color code labels on the Joystick side, see figure 3 and from the Communication Device, see figure 4 on the next page.

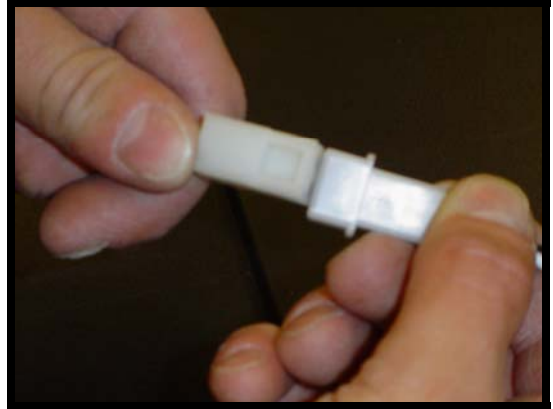


Figure 1



Figure 2



Figure 3

**CAUTION: Make sure connectors are tight and colors are match appropriately.**

6. Mount the IR Receiver Module to a Communication Device.
7. Turn the key switch to the ON position.
8. Power ON Jazzy 1122, power button located on the Joystick.

**WARNING: Safely warp louse wires away from user and moving parts.**

9. If indicators are free of errors, operate like normal.



**Figure 4**

## Removal of the IR Communication Device

The IR Communication Device allows use of the IR Devices such a Dynavox.

Tools: None.

Removal of the IR Communication Device:

**WARNING: Removing the Communication Device the whole unit should be OFF.**

1. Power OFF from Joystick
2. Place key ignition to the OFF position.
3. Squeeze and pull apart the power connector, see figure 1.
4. Disconnect the green RC connector from the green label, see figure 2.
5. Disconnect the red and blue RC connectors from the Joystick; see figure 3, and from the communication device.

6. Place key ignition to the ON position, LED will turn Green.

7. Power ON from Joystick.

The IR Communication Device is now disconnected.

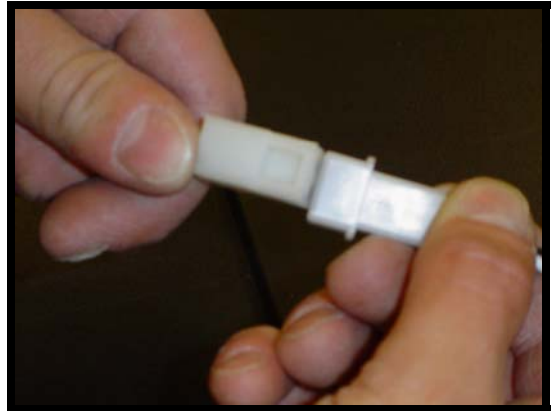


Figure 1



Figure 2



Figure 3

## Removal of Batteries

Remove the shell cover to disconnect the batteries. See Removal of shell in the manual.

Tools: None.

To remove the Batteries:

1. Once shell is remove disconnect Anderson connectors, see figure 1 and 2.

**CAUTION:** When removing batteries, watch out for wires and parts. A good snag can damage parts or rip wires out. See figure 3.

**WARNING: PULL FROM HANDLES ON BATTERY.**

2. Remove Batteries straight up, See figure 4.

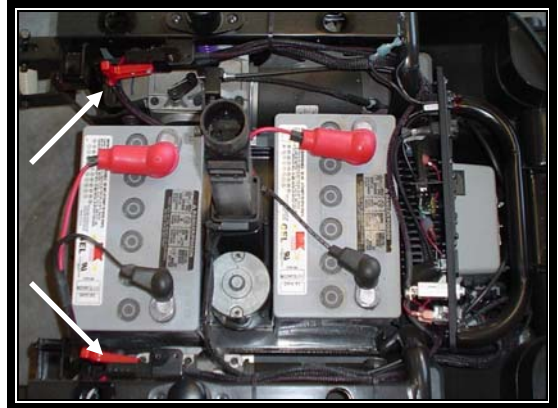


Figure 1

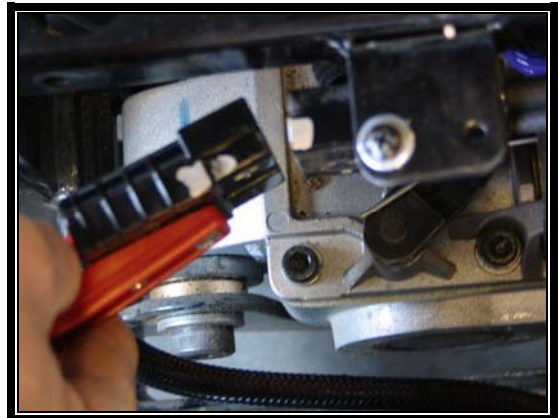


Figure 2



Figure 3



## Installing Batteries

Remove the shell cover install batteries. See Removal of shell in the manual.

Tools: None.

To install the Batteries:

**CAUTION:** When installing batteries, watch out for wires and parts. A good snag can damage parts or rip wires out. See figure 1.

1. See bottom of main unit to place appropriate Gel battery. Place appropriate Gel Battery straight in, arrows pointing out.

**WARNING:** Tuck away all wire from moving parts.

2. Locate the appropriate color coated Anderson connectors see figure 4.
3. Attach the Anderson connectors by firmly pushing connectors together, see figure 5.
4. Attach shell; see section to install shell in the Wheelchair Trainer manual.



Figure 1

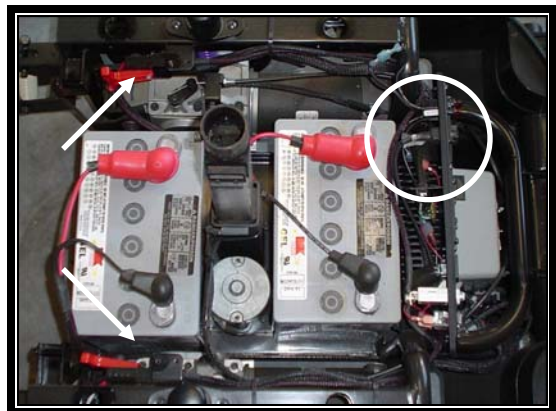


Figure 2

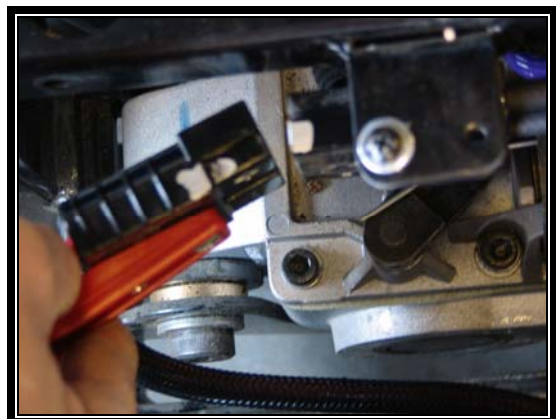


Figure 3



**WARNING**

Please do not push the base of the Jazzy 1122 by the control bar, see figure 1. The control bar is not a structural member.



Figure 1



**WARNING**

Do not step on the cross bars of the wheelchair trainer, see figure 2.

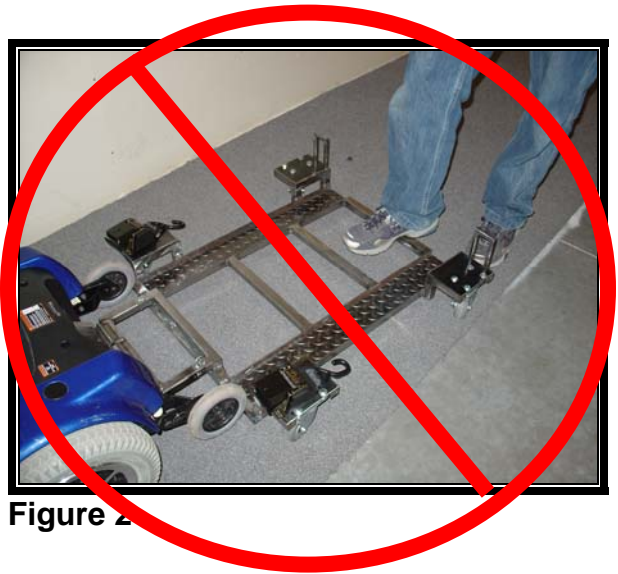


Figure 2

## TROUBLESHOOTING

In the case that your trainer is not operating properly follow these steps to determine the cause of the problem.

1. Circuit breaker: Some operations could potential cause the 50 Amp circuit breaker on the back of the Jazzy chair to become tripped. Push to reset. See Figure 1
2. Batteries not charging: The Ammeter on the back of the Jazzy chair is used to indicate the rate of charge being applied to the batteries. Check to make sure batteries are being charged See Ammeter on left side of Figure 1
3. Fuses: Your wheelchair trainer is equipped with two fuses.
  - a. The red fuse is used for charging and basic chair operations
  - b. The clear fuse is used for the ignition, communication system, and kill switch.If incorrect operation is occurring change fuse with new identical fuses. See Figure 2
4. Communication device: If the communication device is not operating, check to make sure that the correct drive control is plugged in. If not plugged in factory joystick will operate.



Figure 1



Figure 2



