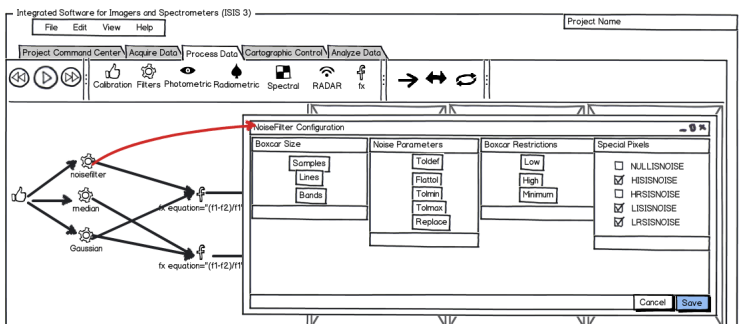
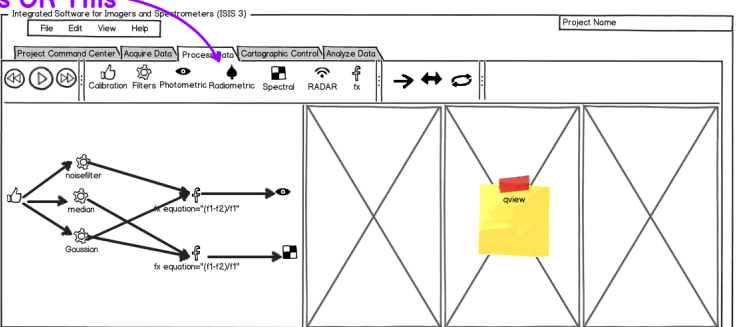


This OR This



The noisefilter configuration popup could as easily be the current GUI for noisefilter with the appropriately automatically generated input/output names...

Double clicking on one of the connecting lines would open up the pair of images that are connected by that line in our control network editing software so the tie points can be evaluated by a human. The colors indicate the quality of the matching/control points, and one can quickly and easily see, in two places, that there are three images that are not connected to the main network.