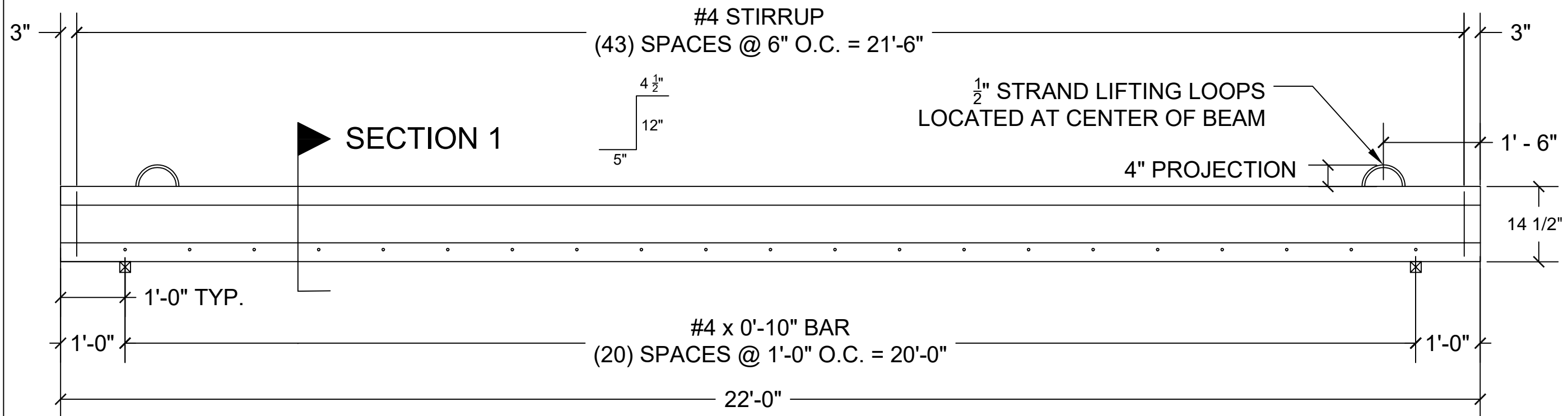


**SECTION 1**  
SCALE: 1" = 5"

**BILL OF MATERIALS**

MATERIAL	QUANTITY	UNIT	COMMENTS / CRITERIA
#4 STIRRUPS	44	EA	ASTM A615 (60 KSI)
#4 BAR AT 21'-9"	4	EA	ASTM A615 (60 KSI)
1/2" DIA. LOW RELAX STAND	4	EA	ASTM A416 (270 KSI)
#4 BAR AT 0'-10"	21	EA	ASTM A615 (60 KSI)
TPAC LW MIX CONCRETE	0.6051	CY	f <sub>ci</sub> = 5000 PSI f <sub>c</sub> (28 DAY) = 8000 PSI
4 X 8 CYLINDERS	6	EA	ASTM C31

TOTAL BEAM WEIGHT	2124 LBS
-------------------	----------



**ELEVATION**  
SCALE: 1" = 20"