



# GENERAL CONSTRUCTION AND DESIGN NOTES

A. THE FOLLOWING NOTES ARE TO APPLY ON APPLICABLE PLANS:

1. APPROVAL OF THESE PLANS BY THE ENGINEER IS FOR A ONE (1) YEAR PERIOD, SUBSEQUENT TO THE DATE OF APPROVAL. IF CONSTRUCTION WORK IS NOT STARTED WITHIN THE ONE (1) YEAR PERIOD, OR HAS BEEN DISCONTINUED FOR ANY REASON FOR LONGER THAN ONE (1) YEAR, THE PLANS SHALL BE RESUBMITTED FOR REVIEW AND RE-APPROVAL.

2. PLAN REVIEW BY THE OFFICIALS DOES NOT EXTEND TO MATERIAL QUANTITIES SHOWN ON THE PLANS.

3. A PUBLIC WORKS PERMIT, ISSUED BY THE NATIONAL PARK SERVICES, IS REQUIRED FOR ALL WORK IN NATIONAL PARK RIGHTS-OF-WAY OR EASEMENTS AND FOR CONSTRUCTION OF ANY IMPROVEMENTS INTENDED TO BECOME PUBLIC PROPERTY.

4. THE OFFICIALS SHALL BE NOTIFIED TWENTY-FOUR (24) HOURS PRIOR TO BEGINNING DIFFERENT PHASES OF CONSTRUCTION SO THAT INSPECTORS MAY BE SCHEDULED.

5. ALL MATERIALS AND WORKMANSHIP SHALL COMPLY WITH CURRENT "MAG UNIFORM STANDARD SPECIFICATIONS AND DETAILS FOR PUBLIC WORKS CONSTRUCTION," THE FEDERAL HIGHWAY ADMINISTRATION URBAN DESIGN MANUAL, AND WITH GENERALLY ACCEPTED ENGINEERING DESIGN AND CONSTRUCTION PRACTICE. ALL WORK AND MATERIALS, WHICH DO NOT CONFORM TO THE STANDARDS AND SPECIFICATIONS, ARE SUBJECT TO REMOVAL AND REPLACEMENT AT THE CONTRACTOR'S EXPENSE. THE CONTRACTOR IS RESPONSIBLE FOR REVIEWING AND UNDERSTANDING, WHICH MAKES MINOR MODIFICATIONS TO CERTAIN MAG SPECIFICATIONS AND DETAILS.

6. ANY WORK PERFORMED WITHOUT THE KNOWLEDGE AND APPROVAL OF THE ENGINEER OR HIS AUTHORIZED REPRESENTATIVE IS SUBJECT TO REMOVAL AND REPLACEMENT AT THE CONTRACTOR'S EXPENSE.

7. THE ENGINEER OR HIS AUTHORIZED REPRESENTATIVE MAY SUSPEND THE WORK BY WRITTEN NOTICE WHEN, IN HIS JUDGMENT, PROGRESS IS UNSATISFACTORY, WORK BEING DONE IS UNAUTHORIZED OR DEFECTIVE, WEATHER CONDITIONS ARE UNSUITABLE, OR THERE IS DANGER TO THE PUBLIC HEALTH OR SAFETY.

8. THE ENGINEER MAY ORDER ANY OR ALL MATERIALS USED IN THE WORK TO BE TESTED ACCORDING TO THE AMERICAN ASSOCIATION OF STATE HIGHWAY AND TRANSPORTATION OFFICIALS (AASHTO) AND THE AMERICAN SOCIETY FOR TESTING AND MATERIALS (ASTM) STANDARDS. THE CONTRACTOR SHALL, AT HIS EXPENSE, SUPPLY ALL SAMPLES REQUIRED FOR TESTING.

9. ACCESS THAT MEETS FIRE ACCESS SHALL BE IN PLACE AND APPROVED BEFORE AND AT ALL TIMES DURING ONSITE COMBUSTIBLE CONSTRUCTION AND/OR PRIOR TO ISSUANCE OF BUILDING PERMITS IN NEW SUBDIVISIONS. FIRE DEPARTMENT AND ENGINEERING SECTION APPROVAL IS REQUIRED FOR OBSTRUCTION OF ACCESS OR WATER SYSTEM SHUTDOWN.

10. THE CONTRACTOR SHALL BE RESPONSIBLE FOR MAINTENANCE OF THE STREETS AND OF PARTIALLY COMPLETED PORTIONS OF THE WORK UNTIL FINAL ACCEPTANCE OF THE WORK. THE CONTRACTOR SHALL SUBMIT TO THE ENGINEER FOR APPROVAL A CONSTRUCTION SCHEDULE FOR ANY STREETS REQUIRED TO BE CLOSED OR PARTIALLY CLOSED FOR THE CONSTRUCTION ACTIVITY. THE CONTRACTOR SHALL REOPEN THE STREETS NO LATER THAN THE OPENING DATE SHOWN ON THE CONSTRUCTION SCHEDULE OR UPON ORDER OF THE ENGINEER. THE REGULATION AND CONTROL OF CONSTRUCTION TRAFFIC SHALL BE AS DIRECTED BY THE ENGINEER OR HIS AUTHORIZED REPRESENTATIVE.

11. APPROVAL OF A PORTION OF THE WORK IN PROGRESS DOES NOT GUARANTEE ITS FINAL ACCEPTANCE. TESTING AND EVALUATION MAY CONTINUE UNTIL WRITTEN FINAL ACCEPTANCE OF A COMPLETE WORKABLE UNIT. ANY DEFECTS WHICH APPEAR IN THE WORK WITHIN ONE (1) YEAR FROM THE DATE OF ACCEPTANCE AND WHICH ARE DUE TO IMPROPER WORKMANSHIP OR INFERIOR MATERIALS SUPPLIED SHALL BE CORRECTED BY OR AT THE EXPENSE OF THE OWNER/DEVELOPER OR THE CONTRACTOR.

12. ACCEPTANCE OF COMPLETED PUBLIC IMPROVEMENTS WILL NOT BE GIVEN UNTIL DEFECTIVE OR UNAUTHORIZED WORK IS REMOVED, AND FINAL CLEAN-UP IS COMPLETE.

13. LOCATION OF UNDERGROUND UTILITIES BEFORE WORK IS BEGUN IS TO BE ACCOMPLISHED IN ACCORDANCE WITH A.R.S. SECTION 40-360.22.

14. IF WORK IS DONE ON PRIVATE PROPERTY IN RELATION TO A PROJECT CONSTRUCTED UNDER THESE STANDARDS, THE CONTRACTOR WILL PROVIDE THE OFFICIALS WITH WRITTEN AUTHORIZATION FROM THE PROPERTY OWNER TO DO SO.

15. THE ESTABLISHMENT AND USE OF TEMPORARY CONSTRUCTION YARDS SHALL CONFORM TO THE CURRENT ZONING CODE STANDARDS FOR TEMPORARY USES.

16. ALL EXCAVATED MATERIAL SHALL BE DISPOSED OF IN ACCORDANCE WITH APPLICABLE CODES AND REGULATIONS. THE CONTRACTOR SHALL OBTAIN ALL REQUIRED APPROVALS AND PERMITS AS DEEMED NECESSARY BY THE OFFICIALS TO DISPOSE OF EXCAVATED MATERIAL.

17. ALL CONSTRUCTION STAKING SHALL BE THE RESPONSIBILITY OF THE CONTRACTOR/DEVELOPER AND PERFORMED UNDER THE DIRECT SUPERVISION OF A REGISTERED LAND SURVEYOR OR CIVIL ENGINEER.

18. ALL TRAFFIC SIGN SHEETING SHALL BE TYPE VIII AS DESIGNED BY ASTM D4956-07E1 STANDARD SPECIFICATIONS FOR RETROREFLECTIVE SHEETING FOR TRAFFIC CONTROL, UNLESS SPECIFIED OTHERWISE ON THE CONSTRUCTION PLANS.

19. WHEN THE CONSTRUCTION PLANS SPECIFY GRAFFITI CONTROL ON BRIDGES OR OTHER STRUCTURES, THE CONTRACTOR SHALL SEAL THE STRUCTURE FIRST USING MONOCHEM AQUASEAL ME 12 AND THEN APPLY MONOCHEM

PERMASHIELD, SACRIFICIAL GRAFFITI CONTROL SYSTEM (OR APPROVED EQUAL).

20. ALL AREAS DISTURBED DURING CONSTRUCTION SHALL BE STABILIZED AND RESEDED IN ACCORDANCE WITH APPLICABLE CODES AND STANDARDS. IN THE EVENT THAT THE CONSTRUCTION ACTIVITY DISTURBS MORE THAN ONE (1) ACRE, A STORMWATER POLLUTION PREVENTION PLAN (SWPPP) SHALL BE PREPARED IN ORDER TO OBTAIN A CONSTRUCTION GENERAL PERMIT FROM ADEQ.

## WATER NOTES

ALL DESIGN, CONSTRUCTION, TESTING AND INSPECTION SHALL CONFORM TO THE ADEQ REQUIREMENTS; WATER DISTRIBUTION IN ACCORDANCE WITH BULLETINS 10 AND 8, AND SEWER COLLECTION IN ACCORDANCE WITH AAC TITLE 18. IN THE EVENT THE ADEQ REQUIREMENTS CONFLICT WITH THESE STANDARDS, THE MORE RESTRICTIVE SHALL APPLY.

A. ROUGH GRADING SHALL BE COMPLETED WITHIN ONE-TENTH (1/10) OF A FOOT OF PLAN GRADE AND APPROVED BY THE ENGINEER'S AUTHORIZED REPRESENTATIVE PRIOR TO INSTALLATION OF UNDERGROUND UTILITIES.

B. NO TRENCH SHALL BE FILLED WITH BEDDING MATERIAL OR BACKFILL UNTIL THE EXCAVATION AND PIPE LAYING, RESPECTIVELY, HAVE BEEN APPROVED BY THE ENGINEER'S AUTHORIZED REPRESENTATIVE.

C. A WATER PRESSURE TEST IS REQUIRED OF ALL WATER LINES AND A HYDROSTATIC OR AIR TEST IS REQUIRED OF ALL SEWER LINES AND MANHOLES. TESTS ARE TO BE CONDUCTED AFTER BACKFILLING IS COMPLETE AND COMPACTED ON ALL PUBLIC AND/OR PRIVATE UNDERGROUND UTILITIES.

D. WATER AND SEWER SERVICE LINES ARE TO BE MARKED AS SHOWN ON THE STANDARD SERVICE DETAILS.

E. WATER LINE DISINFECTION IS TO BE ACCOMPLISHED AS OUTLINED IN ARIZONA DEPARTMENT OF ENVIRONMENTAL QUALITY (ADEQ) "BULLETIN NO. 8."

F. WATER PIPE CLASSIFICATION SHALL BE CLASS 305 FOR A.W.M.A. C-900 PVC AND CLASS 350 FOR DUCTILE IRON UNLESS OTHERWISE APPROVED BY THE ENGINEER. C-900 SHALL CONFORM TO CAST-IRON-EQUIVALENT OUTSIDE DIAMETER AND HAVE ELASTOMERIC GASKETS AND COUPLINGS. ALL DUCTILE IRON PIPE SHALL BE POLYETHYLENE ENCASED IN ACCORDANCE WITH MAG SPECIFICATIONS.

G. ALL MATERIALS THAT COME INTO CONTACT WITH DRINKING WATER SHALL CONFORM TO NSF STANDARD 61 INCLUDING, BUT NOT LIMITED TO, GASKETS, LUBRICANTS, PIPE FITTINGS, AND VALVES (NSF-PW SEAL) (R18-4-119B).

H. ALL PUBLIC SANITARY SEWER LINES AND PRIVATE SEWER SERVICE LINES WITHIN A PUBLIC UTILITY EASEMENT OR RIGHTS-OF-WAY WILL BE INSPECTED PRIOR TO ACCEPTANCE BY THE OFFICIALS.

I. WATER AND SEWER MAINS SHALL BE SEPARATED IN ORDER TO PROTECT PUBLIC WATER SYSTEMS FROM POSSIBLE CONTAMINATION. ALL DISTANCES ARE MEASURED PERPENDICULARLY FROM THE OUTSIDE OF THE SEWER MAIN TO THE OUTSIDE OF THE WATER MAIN. SEPARATION REQUIREMENTS ARE AS FOLLOWS:

1. A WATER MAIN SHALL NOT BE PLACED:

- a. WITHIN SIX (6) FEET, HORIZONTAL DISTANCE, AND LESS THAN TWO (2) FEET, VERTICAL DISTANCE, ABOVE THE TOP OF A SEWER MAIN UNLESS EXTRA PROTECTION IS PROVIDED. EXTRA PROTECTION SHALL CONSIST OF CONSTRUCTING THE SEWER MAIN WITH MECHANICAL JOINT DUCTILE IRON PIPE OR WITH SLIP-JOINT DUCTILE IRON PIPE IF JOINT RESTRAINT IS PROVIDED. ALTERNATE EXTRA PROTECTION SHALL CONSIST OF ENGAGING BOTH THE WATER AND SEWER MAINS IN AT LEAST SIX (6) INCHES OF CONCRETE FOR AT LEAST TEN (10) FEET BEYOND THE AREA COVERED BY THIS SUBSECTION.

- b. WITHIN TWO (2) FEET HORIZONTALLY AND TWO (2) FEET BELOW THE SEWER MAIN, WHEN A WATER MAIN IS PLACED BELOW A SEWER MAIN, EXTRA PROTECTION IS ALWAYS REQUIRED REGARDLESS OF THE VERTICAL SEPARATION.

2. NO WATER PIPE SHALL PASS THROUGH OR COME INTO CONTACT WITH ANY PART OF A SEWER MANHOLE. THE MINIMUM HORIZONTAL SEPARATION BETWEEN WATER MAINS AND MANHOLES SHALL BE SIX (6) FEET, MEASURED FROM THE CENTER OF THE MANHOLE.

3. THE MINIMUM SEPARATION BETWEEN FORCE MAINS OR PRESSURE SEWERS AND WATER MAINS SHALL BE TWO (2) FEET VERTICALLY AND SIX (6) FEET HORIZONTALLY UNDER ALL CONDITIONS. WHERE A SEWER FORCE MAIN CROSSES ABOVE OR LESS THAN SIX (6) FEET BELOW A WATER LINE, THE SEWER MAINS SHALL BE ENCASED IN AT LEAST SIX (6) INCHES OF CONCRETE OR CONSTRUCTED USING MECHANICAL JOINT DUCTILE IRON PIPE FOR TEN (10) FEET ON EITHER SIDE OF THE WATER MAIN.

4. EVEN WHEN EXTRA PROTECTION IS UTILIZED, THE MINIMUM CLEARANCE BETWEEN WATER AND SEWER SHALL BE ONE (1) FOOT.

5. THE SEPARATION REQUIREMENTS DO NOT APPLY TO BUILDING, PLUMBING, OR INDIVIDUAL HOUSE SERVICE CONNECTIONS.

J. WHEN HYDROSTATIC TESTING IS PERFORMED, SEWER LINES SHALL BE TESTED FOR INFILTRATION/EXFILTRATION IN ACCORDANCE WITH ADEQ ENGINEERING BULLETIN NO. 11. MANHOLES SHALL BE TESTED BY FILLING THE MANHOLE WITH WATER. THE APPLICANT SHALL ENSURE THAT THE DROP IN WATER LEVEL DOES NOT EXCEED ONE-THOUSANDTH (0.001) OF THE TOTAL MANHOLE VOLUME IN ONE (1) HOUR. WHEN AIR TESTING IS PERFORMED, SEWER LINES SHALL BE TESTED IN ACCORDANCE WITH ASTM F1417-92. MANHOLES SHALL BE TESTED IN ACCORDANCE WITH ASTM C1244.

K. SEWER PIPE SHALL BE SDR 35, ASTM

D3034 FOR PVC PIPE, OR CLASS 150 DIP LINED WITH PROTECTO 401 CERAMIC EPOXY OR HDPE ASTM F894. ALL DUCTILE IRON PIPELINES SHALL BE POLYETHYLENE ENCASED IN ACCORDANCE WITH MAG SPECIFICATIONS. SPECIAL DESIGN CONSIDERATIONS MAY REQUIRE A HIGHER CLASS RATING OF DIP.

L. NO WATER SETTLING OF TRENCH FILL MATERIAL IS ALLOWED.

M. ALL WATER AND SEWER DESIGN AND CONSTRUCTION SHALL CONFORM TO THE CURRENT ARIZONA DEPARTMENT OF ENVIRONMENTAL QUALITY (ADEQ) REQUIREMENTS. WHEN ADEQ REQUIREMENTS ARE IN CONFLICT WITH THESE STANDARDS, THE MORE RESTRICTIVE SHALL APPLY.

N. TRACER WIRES AND TAPES SHALL BE INSTALLED PRIOR TO TESTING THE WATER OR SEWER MAIN AS REQUIRED. (STRIP WIRE TWO (2) INCHES AT TERMINATION OF THE SERVICE.)

O. WATER VALVES SHALL AND MANHOLES BE ADJUSTED IN ACCORDANCE WITH MARICOPA ASSOCIATION OF GOVERNMENTS.

P. ONE HUNDRED PERCENT (100%) OF THE SEWER LINE SHALL BE TESTED FOR UNIFORM SLOPE BY REMOTE CAMERA AND TESTED FOR SHORT-TERM DEFLECTION.

Q. WHEN A SEWER SERVICE IS REQUIRED TO BE ABANDONED, IT SHALL BE ABANDONED AT THE PROPERTY LINE AND CAPPED USING THE APPROPRIATE MATERIALS (PVC, CLAY, OR CONCRETE).

2. WHEN AN EXISTING WATER SERVICE IS REQUIRED TO BE ABANDONED, IT SHALL BE AS ADJACENT FINISHED LANDSCAPE GRADES. CORP. STOP SHALL BE REMOVED AND THE MAIN CLAMPED WITH AN APPROVED FULL CIRCLE REPAIR CLAMP.

R. SEWER SERVICE LOCATIONS SHALL BE IDENTIFIED BY BRANDING A "W" ON THE TOP OR FACE OF CURB.

S. SEWER SERVICE LOCATIONS SHALL BE IDENTIFIED BY BRANDING AN "S" ON THE TOP OR FACE OF THE CURB.

PAVING NOTES

A. EXACT POINT OF MATCHING TERMINATION AND OVERLAY, IF NECESSARY, SHALL BE DETERMINED IN THE FIELD BY THE ENGINEER OR HIS AUTHORIZED REPRESENTATIVE. WHEN A LONGITUDINAL JOINT ASSOCIATED WITH A TRENCH PATH, PAVEMENT MATCHUP OR OTHER OCCURS ON A STREET THAT INCLUDES A BIKE LANE, THE JOINT SHALL BE LOCATED OUTSIDE THE BIKE LANE.

B. NO JOB WILL BE CONSIDERED COMPLETE UNTIL:

1. ALL CURBS, PAVEMENTS, SIDEWALKS, CATCH BASINS, STORM DRAINS, AND MANHOLES HAVE BEEN CLEANED OF ALL DIRT AND DEBRIS;

2. SURVEY MONUMENTS ARE INSTALLED AND STAMPED;

3. ALL FRAMES, COVERS, AND VALVE BOXES ARE ADJUSTED TO GRADE.

C. NO PAVING CONSTRUCTION SHALL BE STARTED UNTIL ALL UTILITY LINES ARE COMPLETED AND APPROVED UNDER PROPOSED PAVED AREAS.

D. BASE COURSE WILL NOT BE PLACED UNTIL SUBGRADE HAS BEEN APPROVED BY THE ENGINEER OR HIS AUTHORIZED REPRESENTATIVE.

E. THE LOCATION OF ALL WATER VALVES, FIRE HYDRANTS, AND MANHOLES MUST AT ALL TIMES DURING CONSTRUCTION BE REFERENCED AND MADE ACCESSIBLE TO THE OFFICIALS.

F. UTILITY FACILITIES IN CONFLICT WITH THIS WORK WILL BE RELOCATED BY THE PERMITTEE OR THE UTILITY OWNER. THIS ACTIVITY SHALL BE COORDINATED WITH THE OWNER OF THE UTILITY TO PREVENT ANY UNNECESSARY INTERRUPTION OF SERVICE TO EXISTING CUSTOMERS.

G. EXISTING STREET NAME SIGNS, TRAFFIC SIGNS AND DEVICES ASSOCIATED WITH THE PROJECT SHALL BE MAINTAINED DURING CONSTRUCTION AND RELOCATED BY THE CONTRACTOR AS SHOWN ON THE APPROVED PLANS.

H. ANY CHANGES OR ADDITIONS TO PAVEMENT MARKINGS CAUSED BY PAVEMENT OVERLAY, CHIP SEAL, OR INSTALLATION OF UNDERGROUND FACILITIES SHALL BE SHOWN ON THE APPROVED PLANS.

I. ON PROJECTS WHERE THE CONTRACTOR CAUSES EXCESSIVE DAMAGE TO AN EXISTING PAVED STREET OR THERE ARE MULTIPLE STREET CUTS (MAXIMUM OF FOUR (4) IN FIVE HUNDRED (500) FEET) AN ASPHALT OVERLAY SHALL BE REQUIRED.

J. A PRIME COAT IS NOT REQUIRED UNLESS SO SPECIFIED IN THE SOILS AND PAVEMENT REPORT AND/OR SHOWN ON THE PLANS.

K. ALL CURB AND GUTTER, SIDEWALK, DRIVEWAYS, AND SIDEWALK RAMPS SHALL BE CONSTRUCTED ON A MINIMUM THREE (3) INCHES OF AGGREGATE BASE COURSE (ABC). THE ABC SHALL BE CONSTRUCTED IN ACCORDANCE WITH MAG SECTION 310, AND SHALL BE COMPACTED TO NINETY-FIVE PERCENT (95%) RELATIVE DENSITY. ALL PRECAST STRUCTURES SUCH AS MANHOLE BASES, CATCH BASINS, AND BOX CULVERTS SHALL BE CONSTRUCTED ON A MINIMUM OF THREE (3) INCHES OF ABC.

L. PERMANENT PAVEMENT MARKINGS.

1. LONGITUDINAL PAVEMENT MARKINGS SHALL BE INSTALLED IN ACCORDANCE WITH MANUAL ON UNIFORM TRAFFIC CONTROL DEVICES (MUTCD).

2. TRANSVERSE PAVEMENT MARKINGS SUCH AS STOP BARS, CROSSWALKS, ARROWS, AND LEGENDS SHALL BE INSTALLED IN ACCORDANCE WITH MANUAL ON UNIFORM TRAFFIC CONTROL DEVICES (MUTCD).

M. TEMPORARY PAVEMENT MARKINGS.

1. TEMPORARY PAVEMENT MARKINGS, WHEN APPROVED, SHALL BE INSTALLED IN ACCORDANCE WITH MANUAL ON UNIFORM TRAFFIC CONTROL DEVICES (MUTCD).

NOTES:

1. THE USE OF TEMPORARY MARKINGS IS STRONGLY DISCOURAGED AND MAY ONLY BE USED WITH PRIOR APPROVAL. WHEN IT IS USED, THE CONTRACTOR MUST BE AVAILABLE TO

RESTRIPE AS NEEDED UNTIL THE PERMANENT MARKINGS CAN BE INSTALLED.

2. WHEN IT IS IMPRACTICABLE FOR THE CONTRACTOR TO PROVIDE PERMANENT MARKINGS, THE PUBLIC WORKS DEPARTMENT MAY INSTALL THE MARKINGS ON BEHALF OF THE CONTRACT PROVIDED THE FEE FOR THE WORK IS AGREED UPON AND PAID FOR IN ADVANCE.

N. THE MAXIMUM THICKNESS OF A SINGLE LIFT OF PAVEMENT SHALL BE FOUR (4) INCHES.

LANDSCAPING NOTES

ADJACENT SITE IMPROVEMENTS, PAVEMENT CONSTRUCTION, IRRIGATION INSTALLATION AND FINISH GRADING SHALL BE COMPLETED PRIOR TO PLANTING WORK. DO NOT PLANT WHEN CONDITIONS ARE NOT SUITABLE FOR DIGGING, MIXING, RAKING AND/OR GRADING. PLANTING NEEDS TO OCCUR DURING THE MONTHS THAT IRRIGATION SYSTEMS ARE IN OPERATION.

WHEN ADEQ REQUIREMENTS ARE IN CONFLICT WITH THESE STANDARDS, THE MORE RESTRICTIVE SHALL APPLY.

1. SOIL EXCAVATED FROM THE PLANTING PIT SHALL BE TYPICALLY CONSIDERED ACCEPTABLE AS BACKFILL MATERIAL FOR PLANTING.

2. ALL CONTAINERS SHALL BE REMOVED PRIOR TO PLANT INSTALLATION IN A MANNER THAT DOES NOT DISTURB THE POTTED SOIL OR ROOT BALL.

3. SET THE ROOT BALL ON SIX (6) INCHES OF FIRM PLANTING SOIL, PLUMB AND IN THE CENTER OF THE PIT WITH THE ROOT BALL CROWN SLIGHTLY ABOVE THE SAME ELEVATION THAT DOES NOT DISTURB THE POTTED SOIL OR ROOT BALL. REMOVE ANY WIRE, TWINE, BURLAP, OR OTHER MATERIAL FROM THE UPPER ONE-THIRD (1/3) OF THE ROOT BALL OF BALLED AND BURLAPPED STOCK. WIRE BASKETS AND SYNTHETIC BURLAP SHALL BE COMPLETELY REMOVED AFTER THE ROOT BALL HAS BEEN PLACED IN ITS FINAL LOCATION.

4. ONCE PLANT IS SET, PLACE BACKFILL MATERIAL AROUND BASE AND SIDES OF ROOT BALL AND WORK EACH LAYER TO SETTLE BACKFILL AND ELIMINATE VOIDS. WHEN BACKFILLING IS TWO-THIRDS (2/3) COMPLETE, WATER THOROUGHLY. PLACE THE REMAINDER OF THE BACKFILL AND REPEAT WATERING UNTIL NO MORE IS ABSORBED. PLACE THE FINAL LAYER OF BACKFILL AND WATER.

5. ALL DECIDUOUS TREES SHALL BE WRAPPED FROM THE GROUND LINE UP TO AND INCLUDING THE FIRST PRIMARY CROTCH FORMED BY THE FIRST MAJOR BRANCH. WRAPPING SHALL BE DONE AFTER THE PLANT HAS BEEN INSTALLED.

6. TWO (2) TO THREE (3) INCHES OF SPECIFIED MULCH SHALL BE PLACED IN THE AREA DISTURBED BY EXCAVATION OF THE PLANTING WELL.

B. GROUND COVER INSTALLATION.

1. PRIOR TO PLANTING ACTIVITIES, COMPLETELY REMOVE EXISTING WEEDS, INCLUDING ROOTS, IMMEDIATELY PRIOR TO INSTALLATION. CULTIVATE GROUND COVER AREAS TO A DEPTH OF SIX (6) INCHES AND GRADE SMOOTHLY AND UNIFORMLY. PLANT GROUND COVER SO THE ROOT CROWN IS AT OR SLIGHTLY ABOVE THE BED'S FINISH GRADE. AFTER PLANTING OF GROUND COVER AND PRIOR TO MULCHING, SPREAD PRE-EMERGENT WEED CONTROL OVER PLANTING BED SOIL SURFACE IN ACCORDANCE WITH MANUFACTURER'S WRITTEN DIRECTIONS. INSTALL THE SPECIFIED MULCH TO A DEPTH OF TWO (2) INCHES OVER THE ENTIRE GROUND COVER BED.

C. LANDSCAPE COMPLETION.

1. PRUNE DEAD OR DAMAGED BRANCHES, MAKING ALL CUTS AT BRANCH COLLAR. MAINTAIN THE NATURAL HABIT, SHAPE AND SPECIFIED SIZE. REMOVE ALL TAGS, LABELS, AND OTHER MATERIAL.

2. TRANSVERSE PAVEMENT MARKINGS SUCH AS STOP BARS, CROSSWALKS, ARROWS, AND LEGENDS SHALL BE INSTALLED IN ACCORDANCE WITH MANUAL ON UNIFORM TRAFFIC CONTROL DEVICES (MUTCD).

M. TEMPORARY PAVEMENT MARKINGS.

1. TEMPORARY PAVEMENT MARKINGS, WHEN APPROVED, SHALL BE INSTALLED IN ACCORDANCE WITH MANUAL ON UNIFORM TRAFFIC CONTROL DEVICES (MUTCD).

NOTES:


1. THE USE OF TEMPORARY MARKINGS IS STRONGLY DISCOURAGED AND MAY ONLY BE USED WITH PRIOR APPROVAL. WHEN IT IS USED, THE CONTRACTOR MUST BE AVAILABLE TO

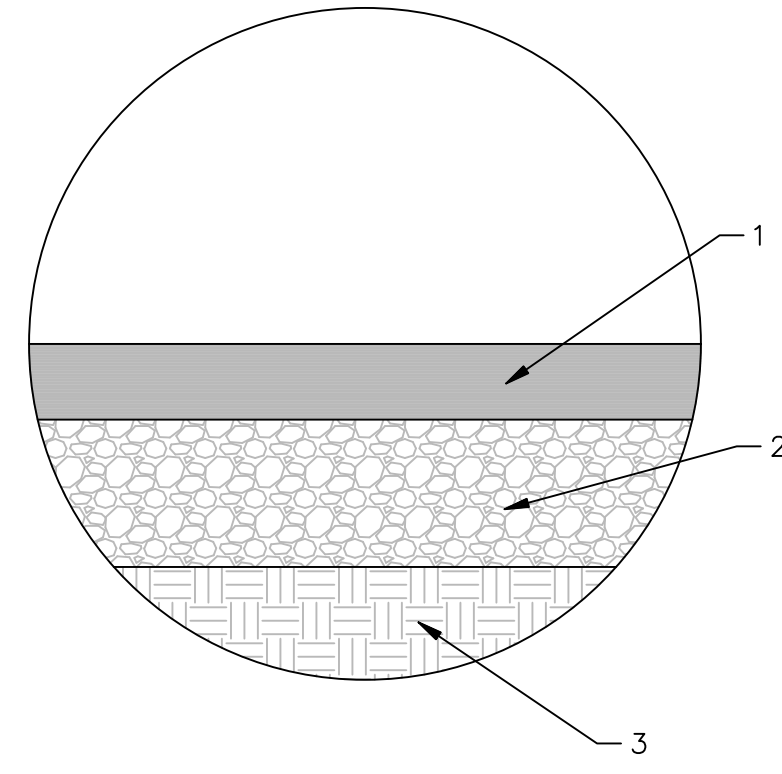
SIGN SCHEDULE						
KEYNOTE NUMBER	MUTCD SIGN CODE	SIZE (IN)	SIGN DESCRIPTION	QUANTITY	DIRECTION - SIGN IS VISIBLE FROM THIS DIRECTION OF TRAVEL	# OF POSTS (/EA)
251	R2-1	24X30	'SPEED LIMIT 15 MPH'	1	WESTBOUND	1
252	R7-1	12X18	'NO PARKING ANYTIME'	2	WESTBOUND	1
253	R1-1	30X30	'STOP'	1	NORTHBOUND	1
254	R3-1 MODIFIED	12X18	'NO RIGHT TURN BUS ONLY'	1	NORTH/WESTBOUND	1
255	N/A	12X18	'ADDITIONAL PARKING'	1	WESTBOUND	1
256	R6-1R	12X36	'ONE-WAY' (RIGHT)	1	WESTBOUND	1
257	R6-1L	12X36	'ONE-WAY' (LEFT)	2	EASTBOUND	1
258	D9-6	12X18	RESERVED PARKING SYMBOL OF ACCESSIBILITY	8	WESTBOUND	1
259	N/A	12X18	'15 MINUTE PARKING - LOADING & UNLOADING ZONE'	1	EASTBOUND	1
260	R5-1	30X30	'DO NOT ENTER'	2	SOUTHBOUND	1
261	N/A	14X10	'RESTRICTED AREA - EMPLOYEE ONLY'	3	SOUTHBOUND	1
262	N/A	12X18	'BUS AND RV PARKING ONLY'	4	NORTHBOUND	1
263	N/A	12X18	'MOTORCYCLE PARKING ONLY'	1	NORTHBOUND	1

QUANTITIES		
DEMOLITION	UNITS	QUANTITY
101 CLEAR AND GRUB	SY	5135
102 REMOVE AND DISPOSE EXISTING ASPHALT	SY	550
103 REMOVE AND DISPOSE EXISTING CURB AND GUTTER	LF	20
NEW CONSTRUCTION	UNITS	QUANTITY
200 EARTHWORK (NET FILL)	CY	660
211 TYPE A ASPHALT PAVEMENT (4" AC/ 8" ABC)	SY	4355
212 TYPE A CONCRETE PAVEMENT (9" PCC/ 12" ABC)	SF	2900
213 TYPE A CONCRETE SIDEWALK (6" PCC/ 4" ABC)	SF	2300
214 TYPE A CURB AND GUTTER	LF	850
215 LANDSCAPING PER GRADING PLAN	SF	1450
216 CROSSWALK PAVEMENT MARKINGS	LF	250
217 4" WHITE PAINTED PARKING LINE PER DETAIL 3.04	LF	1600
218 CONVERT NORMAL STALLS TO ADA PARKING	EA	6
220 INSTALL SIDEWALK RAMP MAG STD 236-2	EA	1
221 INSTALL 4" THICK 1/4" MINUS DECOMPOSED GRANITE	SF	607
222 MOTORCYCLE PARKING SPOT PER DETAIL 3.04	EA	1
251 INSTALL AND FURNISH MUTCD PER SIGN SCH.	EA	1
252 INSTALL AND FURNISH MUTCD PER SIGN SCH.	EA	1
253 INSTALL AND FURNISH MUTCD PER SIGN SCH.	EA	1
254 INSTALL AND FURNISH MUTCD PER SIGN SCH.	EA	1
255 INSTALL AND FURNISH MUTCD PER SIGN SCH.	EA	1
256 INSTALL AND FURNISH MUTCD PER SIGN SCH.	EA	1
257 INSTALL AND FURNISH MUTCD PER SIGN SCH.	EA	1
258 INSTALL AND FURNISH MUTCD PER SIGN SCH.	EA	1
259 INSTALL AND FURNISH MUTCD PER SIGN SCH.	EA	1
260 INSTALL AND FURNISH MUTCD PER SIGN SCH.	EA	1
261 INSTALL AND FURNISH MUTCD PER SIGN SCH.	EA	1
262 INSTALL AND FURNISH MUTCD PER SIGN SCH.	EA	1
263 INSTALL AND FURNISH MUTCD PER SIGN SCH.	EA	1
DRAINAGE	UNITS	QUANTITY
501 CHANNEL CUT INTO GRADE	LF	705
502 18" CORRUGATED HDPE (SMOOTH INTERIOR)	LF	60
503 DOUBLE HEADWALL PER MAG STD 501-22	EA	2
SWPPP	UNITS	QUANTITY
700 Straw Rolls	LF	602
701 Rock Dams	CY	4.75

PLOTTED: May 10, 2018 - 1:00pm

FILE: \\EGRSHARES\homes\NAU\yr26\Documents\CENE\_486\CAD\COVER\_CN.dwg <<C3D\_Imperial>>

DRAWING NO.	GN	OF	8
MONTIEZUMA CASTLE ARIZONA			
PARKING LOT ADDITION AND REDESIGN			
GENERAL NOTES			
JOB NO:	51118	DATE:	Feb-2018
SCALE:	N/A	DRAWN:	RNL/JLR
DESIGN:	MTE	CHECKED:	MTE
PRELIMINARY NOT FOR CONSTRUCTION, BIDDING OR RECORDING			
3600 S. LAS VEGAS BLVD LAS VEGAS, NV 89109			
			
NO.	DESCRIPTION	DATE	BY

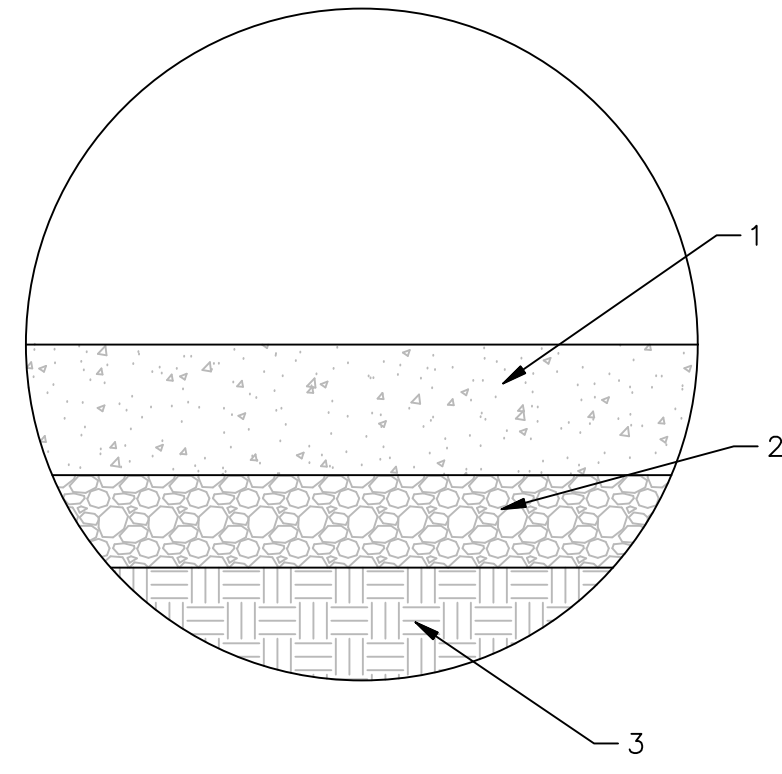


**KEYNOTES**

- 4" THICK ASPHALT CONCRETE (3/4" MIX) PER MAG SPEC. 321 DETAILS AND SPECS.
- 8" THICK ABC PER MAG SPEC. 702 DETAILS AND SPECS. 100% COMPACTION.
- NATIVE SUBGRADE SCARIFIED TO A MIN. DEPTH OF 8", MOISTURE CONDITIONED TO OPTIMUM TO +4% ABOVE OPTIMUM PER MAG SPEC. 301. 95% COMPACTION

**NOTES:**  
ASPHALT PAVEMENT SECTIONS ARE BASED ON THE GEOTECHNICAL EVALUATION FOR MONTEZUMA CASTLE NATIONAL MONUMENT PARKING LOT ADDITION PREPARED BY OTHERS.

3.01 ASPHALT PAVEMENT SECTION  
DT NTS

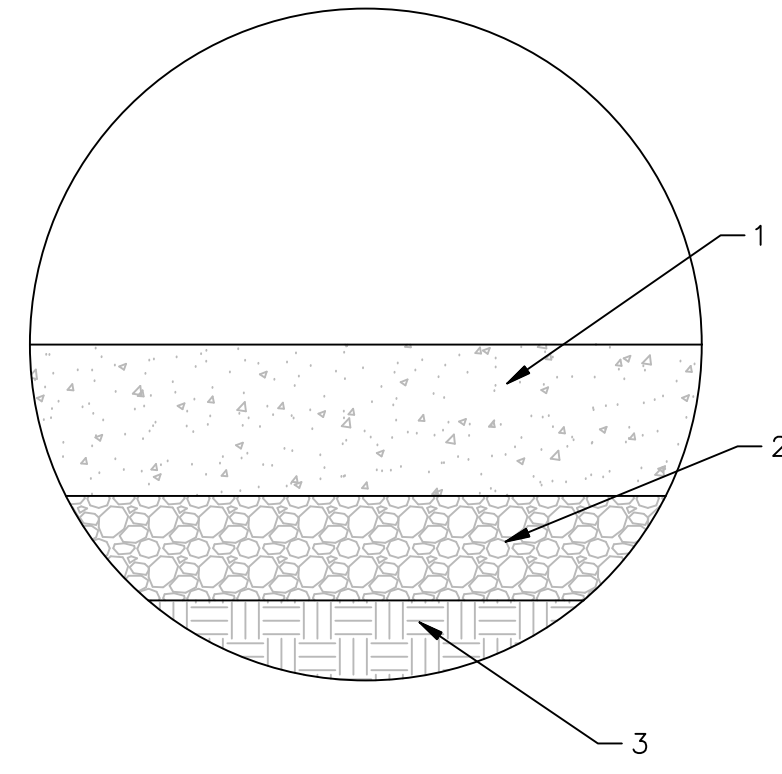


**KEYNOTES**

- 6" PORTLAND CEMENT CONCRETE (PCC), 4000 PSI PER PAVING NOTES SHEET ON - GENERAL NOTES.
- 4" THICK ABC PER MAG SPEC. 702 AND TO MAG UNIFORM DETAILS AND SPECS. 95% COMPACTION.
- NATIVE SUBGRADE SCARIFIED TO A MIN. DEPTH OF 8", MOISTURE CONDITIONED TO OPTIMUM TO +4% ABOVE OPTIMUM PER MAG SPEC. 301. 95% COMPACTION

**NOTES:**  
- CONCRETE PAVEMENT SECTIONS ARE BASED ON THE GEOTECHNICAL EVALUATION FOR MONTEZUMA CASTLE NATIONAL MONUMENT PARKING LOT ADDITION PREPARED BY OTHERS.  
- WIDTH OF SIDEWALK NOTED ON PLANS

3.02 CONCRETE SIDEWALK SECTION  
DT NTS

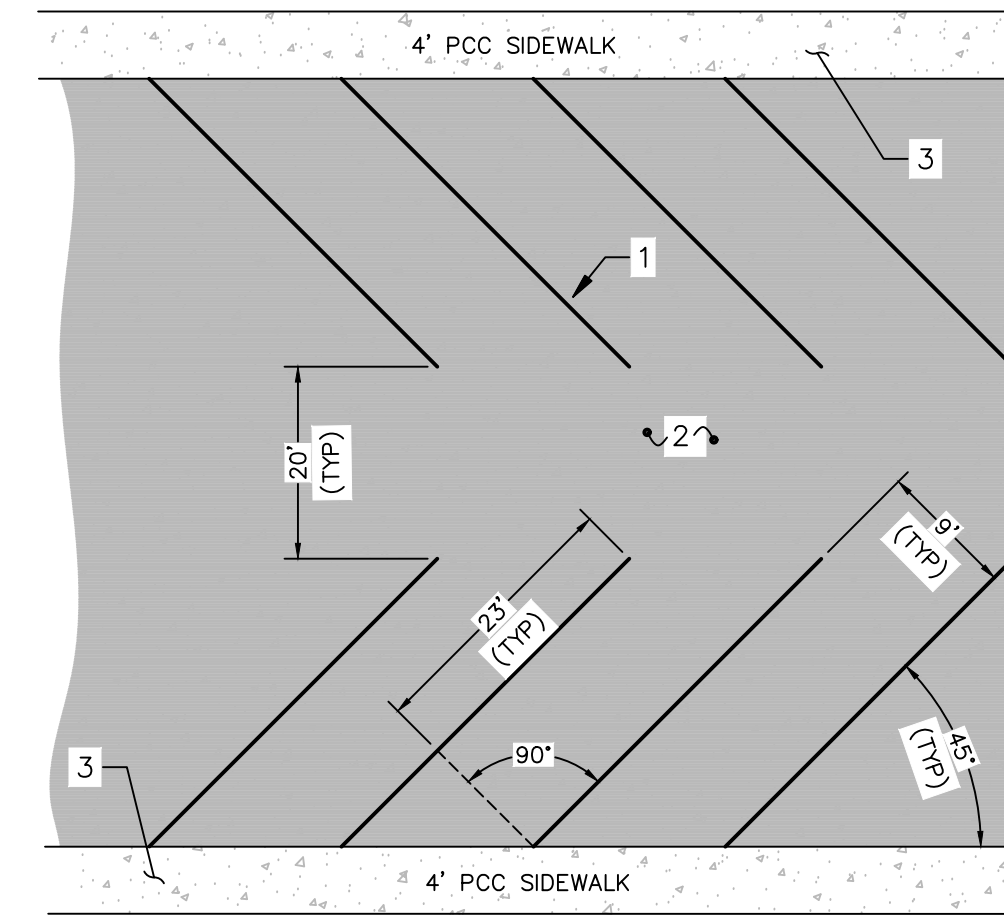


**KEYNOTES**

- 9" PORTLAND CEMENT CONCRETE, 4000 PSI PER PAVING NOTES SHEET ON - GENERAL NOTES.
- 12" THICK ABC PER MAG SPEC. 702 AND TO MAG UNIFORM DETAILS AND SPECS. 95% COMPACTION.
- NATIVE SUBGRADE SCARIFIED TO A MIN. DEPTH OF 8", MOISTURE CONDITIONED TO OPTIMUM TO +4% ABOVE OPTIMUM PER MAG SPEC. 301. 95% COMPACTION

**NOTES:**  
- CONCRETE PAVEMENT SECTIONS ARE BASED ON THE GEOTECHNICAL EVALUATION FOR MONTEZUMA CASTLE NATIONAL MONUMENT PARKING LOT ADDITION PREPARED BY OTHERS.  
- BUS PARKING PAD IS 10' X 55'.

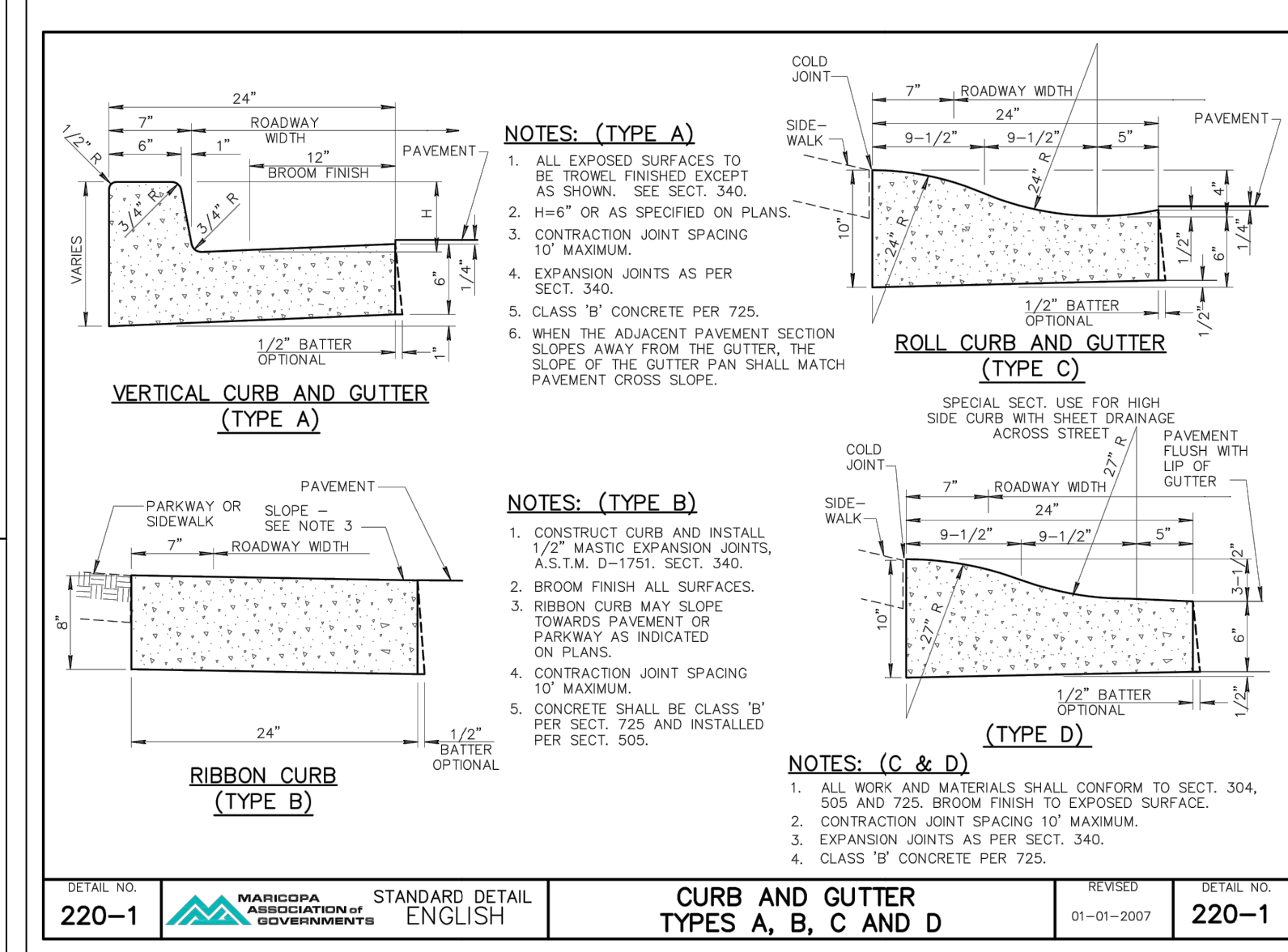
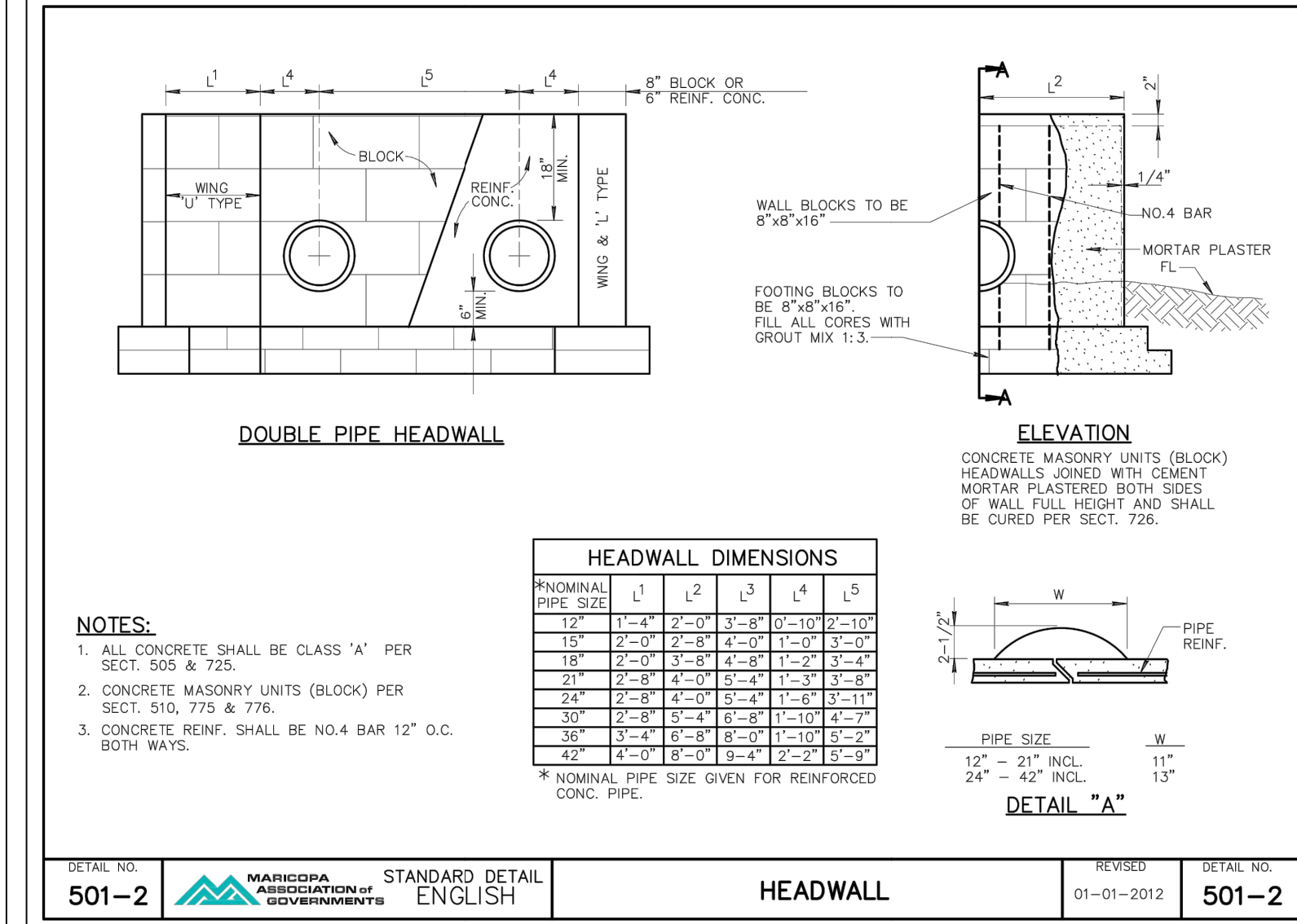
3.03 CONCRETE BUS PARKING PAD SECTION  
DT NTS



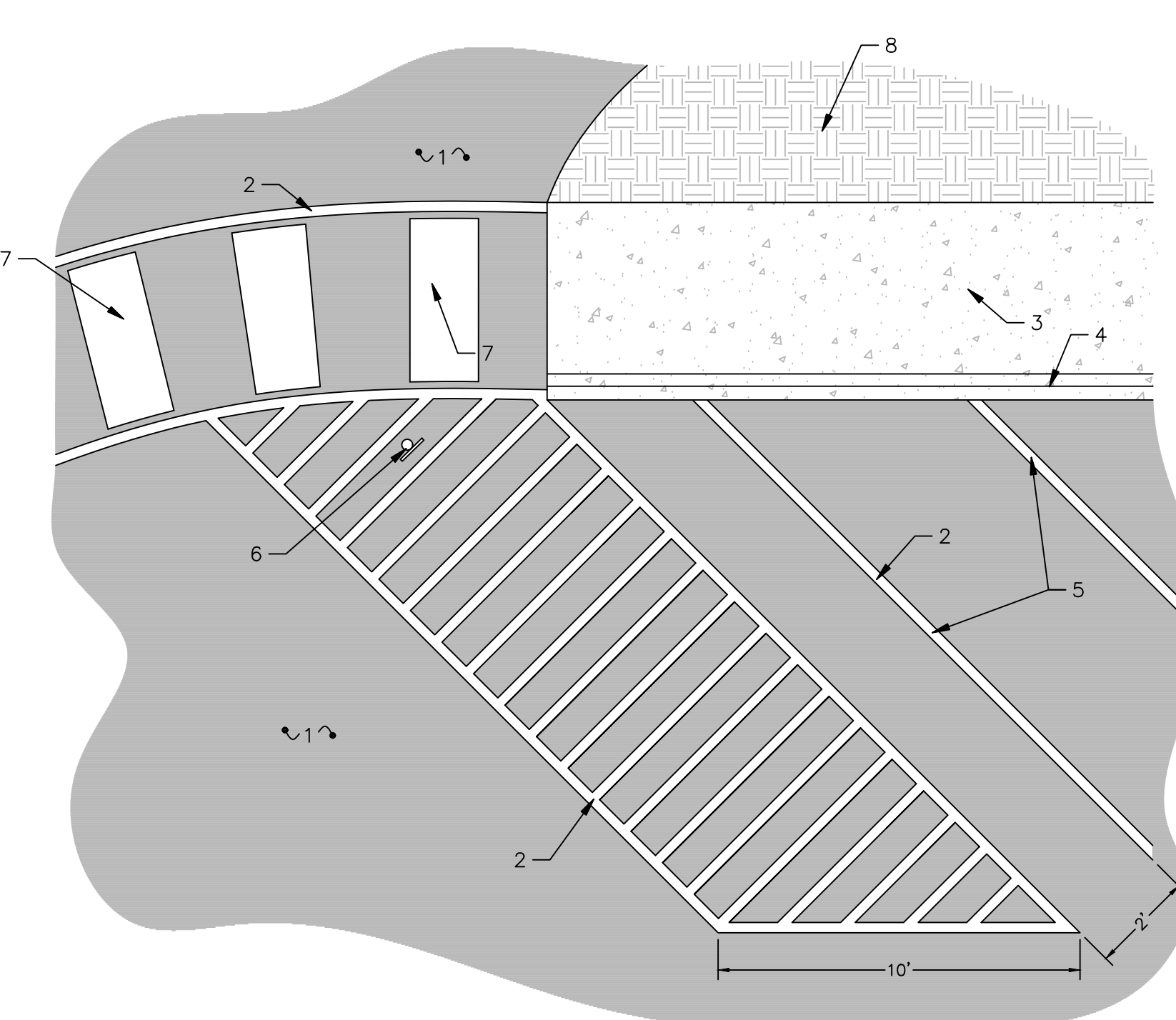
**KEYNOTES**

- 4" THICK WHITE PAINTED LINE TO BE PLACED ON NEW PAVEMENT FOLLOWING ALIGNMENT PROVIDED IN DETAIL AND HORIZONTAL CONTROL.
- NEW 4" ASPHALT CONCRETE ON 8" A.B.C. PER DETAIL 3.01 ON SHEET DT - DETAILS.
- NEW 6" PCC SIDEWALK ON 4" A.B.C. PER DETAIL 3.02 ON SHEET DT - DETAILS.

3.04 TYPICAL PARKING LOT SPOT DETAIL  
DT NTS



3.06 CURB AND GUTTER TYPES A, B, C AND D  
DT NTS

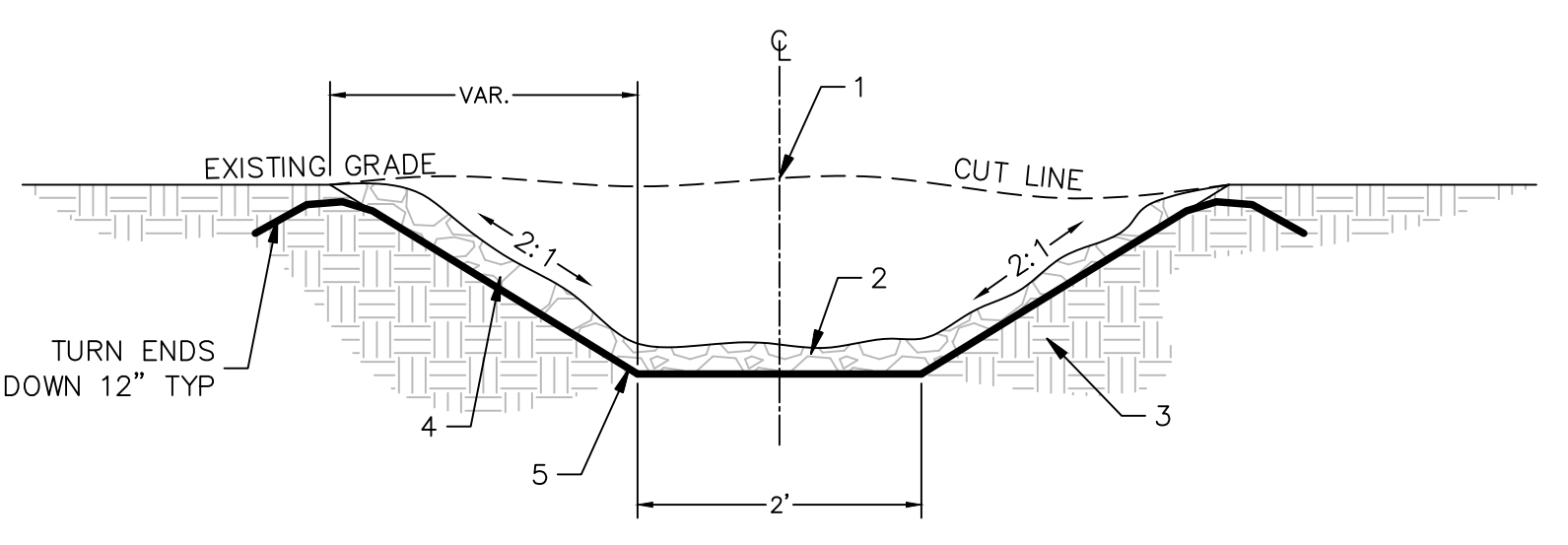


**KEYNOTES**

- PARKING LOT PER NEW CONSTRUCTION, IMPROVEMENT SHEETS, AND DETAIL 3.01 ON THIS SHEET.
- 4" THICK WHITE PAINT STRIPING PER MUTCD STANDARDS
- PROPOSED 4" PCC SIDEWALK PER DETAIL 3.02 ON THIS SHEET. ALIGNMENT OF SIDEWALK PROVIDED ON HORIZONTAL CONTROL SHEET.
- PROPOSED CURB AND GUTTER PER MAG STANDARD DETAILS ON THIS SHEET.
- PARKING STALLS PER DETAIL 3.04 ON THIS SHEET.
- NEW "MOTORCYCLE PARKING ONLY" SIGN PER SIGN SCHEDULE ON SHEET GN.
- NEW CROSS WALK PER MUTCD STANDARDS AND SPECIFICATIONS.
- EXISTING LANDSCAPE TO STAY PER IMPROVEMENT SHEETS

**SPECIFICATIONS:**  
MOTORCYCLE PARKING SPOT TO BE SAME LENGTH AND SIZE AS NORMAL PARKING SPOT WITH MADE MODIFICATIONS ABOVE. THE PARKING IS TO HAVE A 2 FOOT OFFSET FROM NORMAL PARKING STALL WITH A 10 FOOT DISTANCE AS SHOWN IN DETAIL. STRIPING WITHIN PARKING LOT TO MEET MUTCD STANDARDS ON FILLED SPOTS AND/ OR LOCAL CODES.

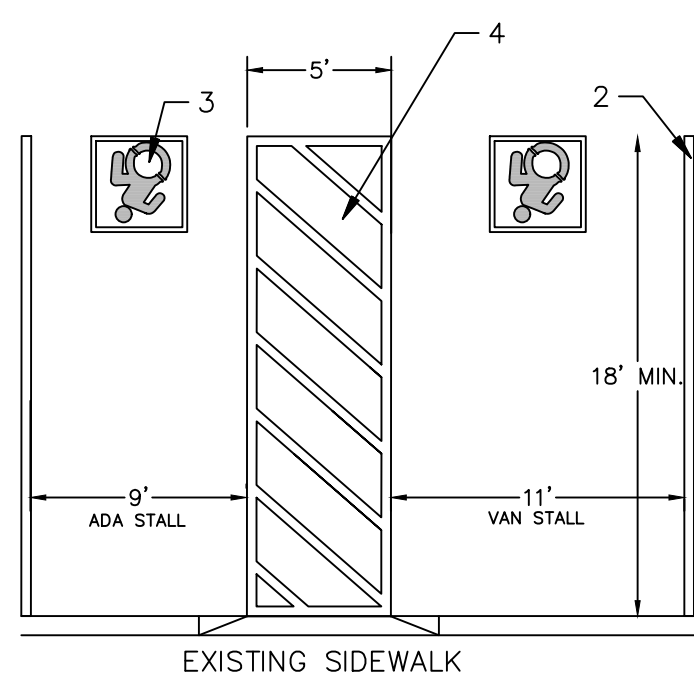
3.05 MOTORCYCLE PARKING SPOT  
DT NTS



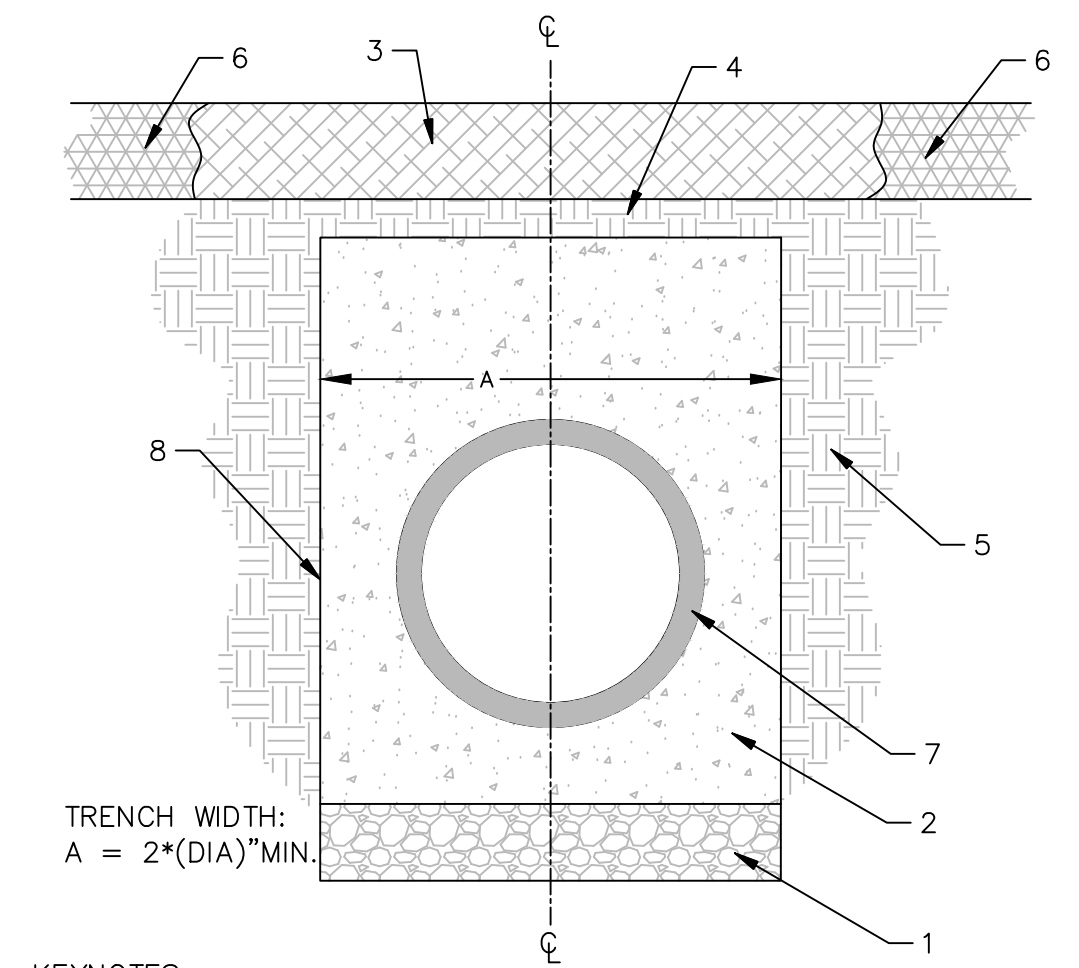
**KEYNOTES**

- CENTERLINE OF CHANNEL TO BE CONTROL - SEE HORIZONTAL CONTROL SHEET. SIZE OF CHANNEL TO BE CONSISTENT WITH 2:1 SIDE SLOPE MATCH TO GRADE WITH 2 FOOT BOTTOM WIDTH CENTERED ALONG CENTERLINE.
- CHANNEL TO BE CUT INTO GRADE WITH NO EXTRUDING GRADE ABOVE CHANNEL THAT WILL PREVENT RUNOFF FROM EXISTING GRADE FROM REACHING THE INSIDE OF THE CHANNEL.
- NATURAL GRADE TO BE COMPACTED TO 95% RELATIVE DENSITY PRIOR TO CHANNEL IMPROVEMENTS.
- RIPP RAP TO MEET ASTM C127 STANDARDS AND PROVIDE A D50 = 8" NO LARGER THAN 12" IN SIZE AND TO BE PLACED IN A WAY THAT DOES NOT IMPEDE FLOWS.
- GEO-SYNTHETIC FABRIC SUCH AS MIRAFI 140N FILTER FABRIC OR APPROVED EQUAL MUST BE PLACED BELOW RIPRAP AND ANCHORED TO GROUND USING INDUSTRY STANDARDS

3.06 CHANNEL CROSS SECTION  
DT NTS



3.07 ADA TYPICAL DETAIL  
DT NTS

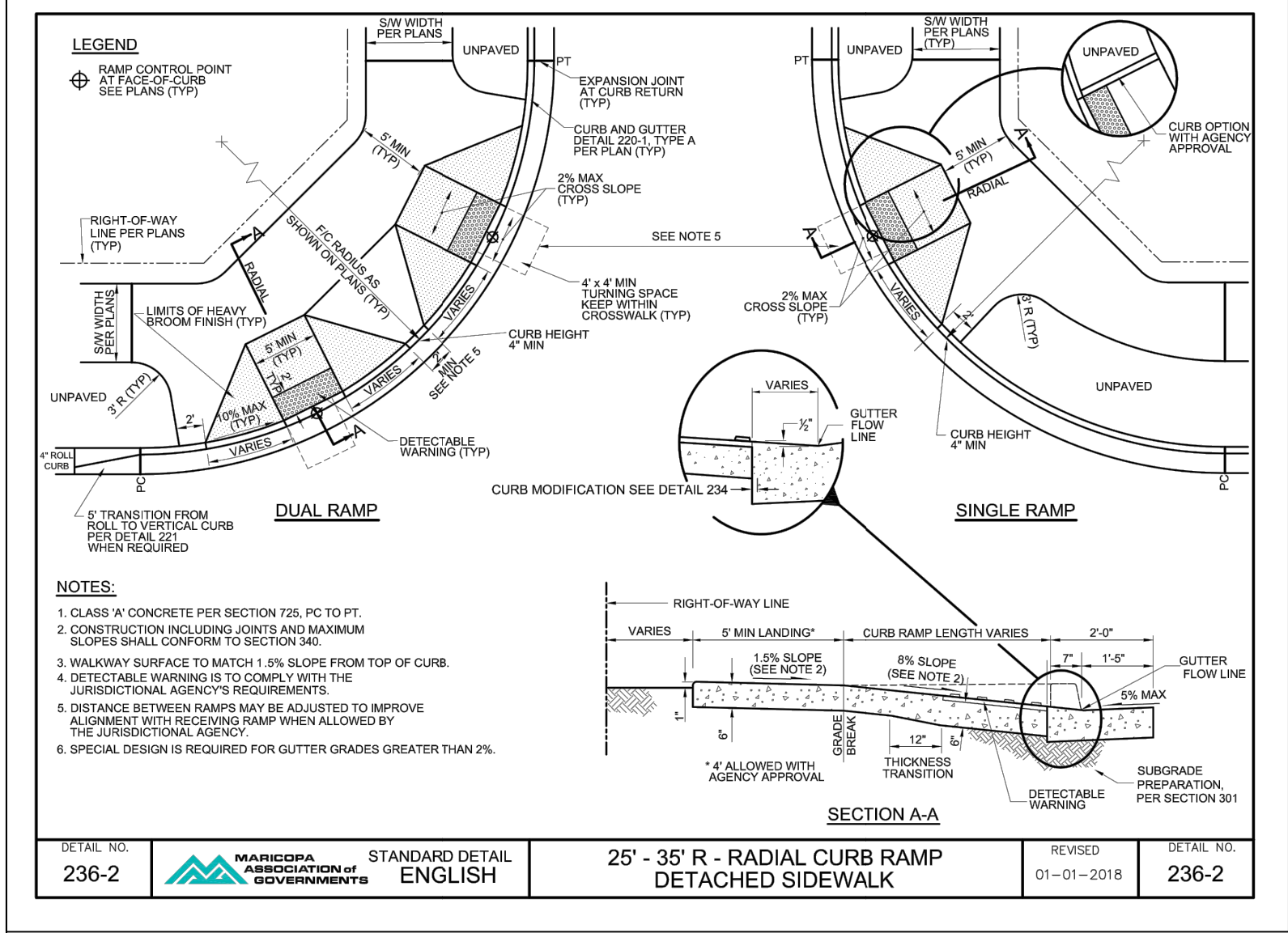


**KEYNOTES**

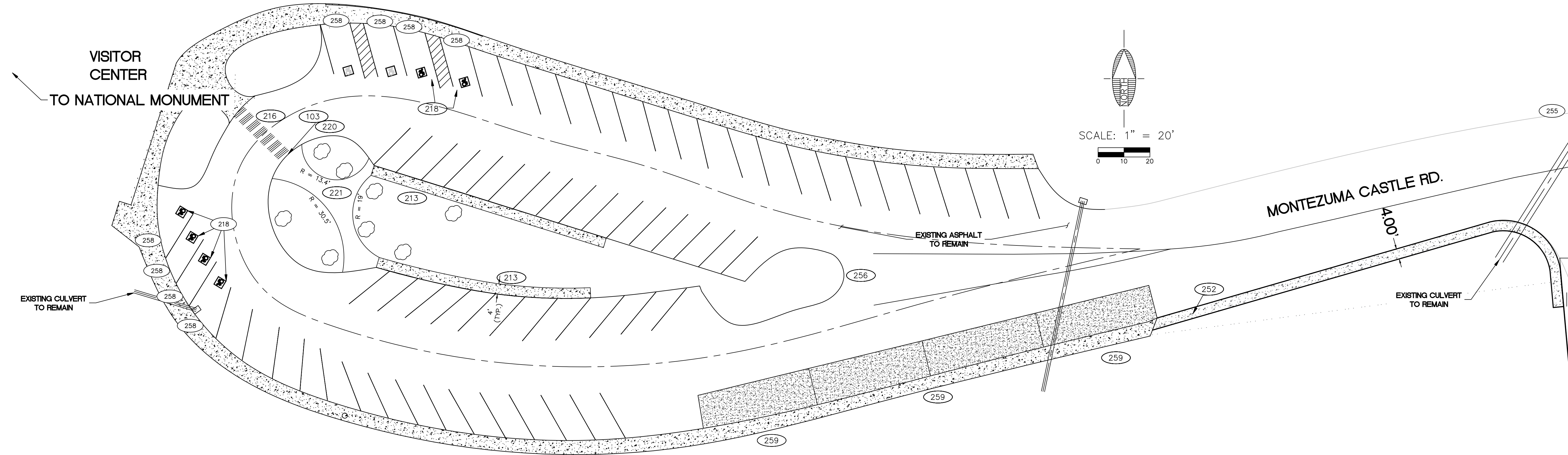
- STANDARD BEDDING: GRANULAR MATERIAL, 3/4" MAX. COMPACTED TO 95% CLSM BEDDING; 1 SACK CONTROLLED LOW STRENGTH MATERIAL (CLSM) PER MAG STANDARD SPECIFICATION SECTION 604 SHALL BE USED IN LOCATIONS WHERE TRENCH WIDTH IS LESS THAN THE MINIMUM DIMENSIONS SHOWN IN TABLE A.
- STORM DRAIN TO BE CONCRETE ENCASED WITH TYPE A CONCRETE WITH A COMPRESSIVE STRENGTH OF 4000 PSI WITH 5% AIR ENTRAINMENT. PROFILE PROVIDED IN IMPROVEMENT SHEET.
- EXISTING ROAD MATERIAL TO BE REPLACED WITH NEW OR SIMILAR MATERIAL COMPACTED TO 95% RELATIVE DENSITY.
- NATIVE MATERIAL, 8" MIN. 24" MAX COMPACTED TO 95%.
- UNDISTURBED NATIVE MATERIAL.
- UNDISTURBED MAINTENANCE ROAD.
- STORM DRAIN PIPE.
- TRENCH WALL. PROVIDE TRENCH PROTECTION AND SHORING AS REQUIRED.

**NOTES:**  
TRENCH SECTIONS ARE BASED ON THE GEOTECHNICAL EVALUATION FOR MONTEZUMA CASTLE NATIONAL MONUMENT PARKING LOT ADDITION PREPARED BY OTHERS.

3.08 TRENCH DETAIL  
DT NTS



3.09 25' - 35' R - RADIAL CURB RAMP DETACHED SIDEWALK  
DT NTS



DEMO

103 REMOVE AND DISPOSE OF EXISTING CURB AND GUTTER.

NEW CONSTRUCTION

- 213 TYPE A CONCRETE SIDEWALK (6" PCC/4" ABC) PER DETAIL 3.02, SHEET DT
- 216 CROSSWALK PAVEMENT MARKING PER MUTCD.
- 218 (6 EA.) CONVERT STANDARD STALLS TO ADA PARKING STALL. MARKINGS PER DETAIL 307., SHEET DT.
- 220 INSTALL SIDEWALK RAMP PER MAG STD.236-2 ON SHEET DT.
- 221 INSTALL 4" THICK OF 1/4" MINUS DECOMPOSED GRANITE ON 95% COMPACTED SUBGRADE.
- 251 INSTALL SPEED LIMIT 15 MPH SIGN AND POST PER SIGN SCHEDULE ON SHEET GN.
- 252 INSTALL NO PARKING ANYTIME SIGN AND POST PER SIGN SCHEDULE ON SHEET GN.
- 253 INSTALL STOP SIGN AND POST PER SIGN SCHEDULE ON SHEET GN.
- 254 INSTALL NO RIGHT TURN BUS ONLY SIGN AND POST PER SIGN SCHEDULE ON SHEET GN.
- 255 INSTALL ADDITIONAL PARKING SIGN AND POST PER SIGN SCHEDULE ON SHEET GN.
- 256 INSTALL ONE-WAY (RIGHT) SIGN AND POST PER SIGN SCHEDULE ON SHEET GN.
- 257 INSTALL ONE-WAY (LEFT) SIGN AND POST PER SIGN SCHEDULE ON SHEET GN.
- 258 INSTALL RESERVED PARKING SYMBOL OF ACCESSIBILITY SIGN AND POST PER SIGN SCHEDULE ON SHEET GN.
- 259 INSTALL 15 MINUTE PARKING - LOADING & UNLOADING ZONE SIGN AND POST PER SIGN SCHEDULE ON SHEET GN.
- 260 INSTALL DO NOT ENTER SIGN AND POST PER SIGN SCHEDULE ON SHEET GN.
- 261 INSTALL RESTRICTED AREA - EMPLOYEE ONLY SIGN AND POST PER SIGN SCHEDULE ON SHEET GN.
- 262 INSTALL BUS AND RV PARKING ONLY SIGN AND POST PER SIGN SCHEDULE ON SHEET GN.
- 263 INSTALL MOTORCYCLE PARKING ONLY SIGN AND POST PER SIGN SCHEDULE ON SHEET GN.

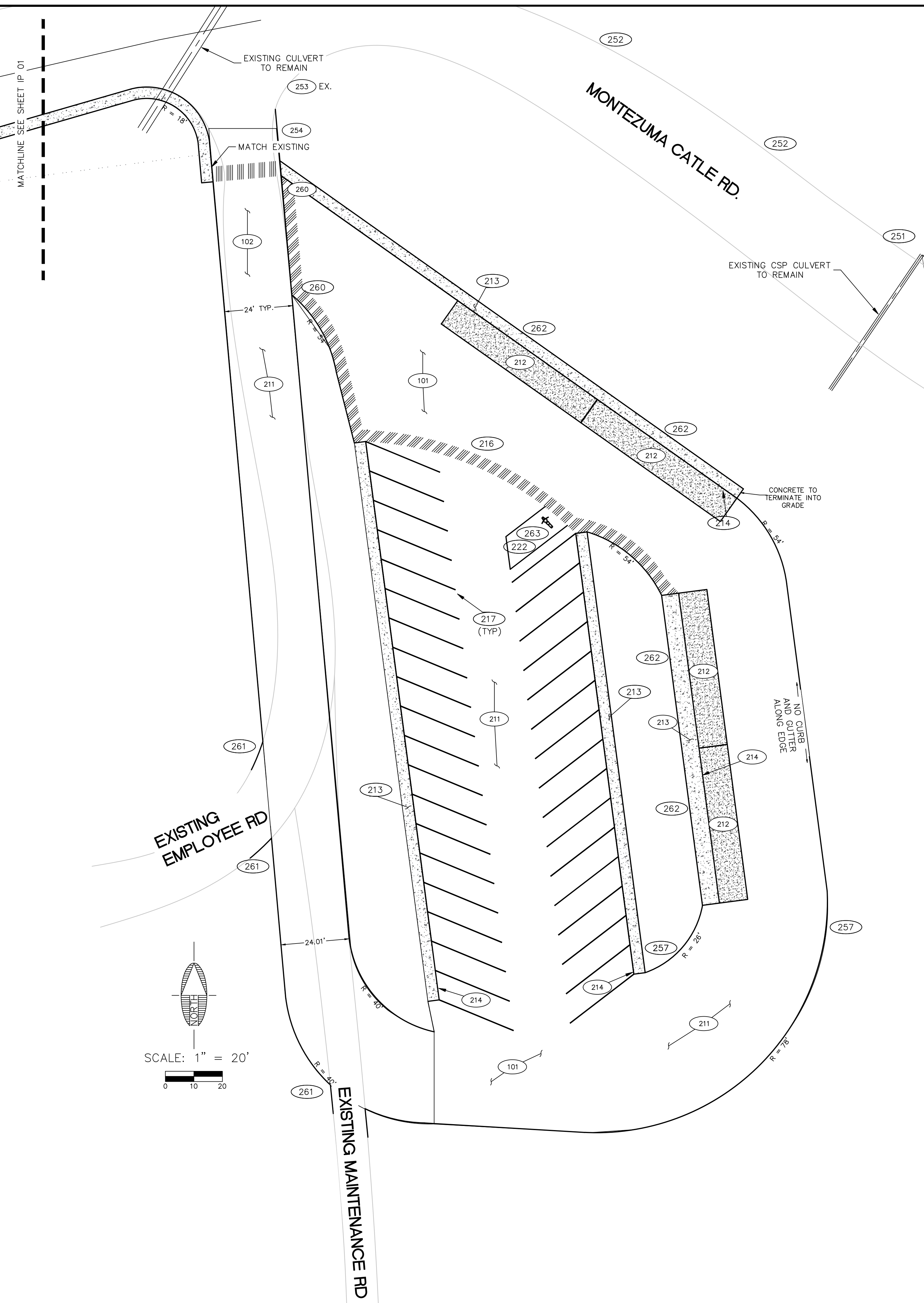
NOTES

1. OWNER TO PROVIDE MULTIPLE PICNIC TABLES AND TO BE INSTALLED BY CONTRACTOR UNLESS STATED OTHERWISE BY OWNER. CONTRACTOR TO COORDINATE WITH OWNER.
2. NEW SIDEWALK TO FOLLOW PARALLEL TO EX. ROAD. IF ADDITIONAL ASPHALT IS REQUIRED CONTRACTOR SHALL SAWCUT 1' FROM EDGE AND MATCH EXISTING PAVEMENT THICKNESS.
3. EX. PARKING STALLS MAY NOT REPRESENT ACTUAL PARKING STALL LINES.
4. ALL EX. PARKING STALL STRIPING TO REMAIN THE SAME UNLESS DENOTED BY NEW CONSTRUCTION.
5. ALL SIDEWALK, CURB, GUTTER, CATCH BASINS, STORMWATER DRAINAGE TO REMAIN.
6. NO CHANGE TO PAVEMENT MARKINGS ARE MADE ON THIS SHEET.
7. REMOVE LANDSCAPE AS NECESSARY TO INSTALL NEW SIDEWALK AND D.G.. ALL TREE REMOVALS ARE PROHIBITED UNLESS APPROVED BY OWNER AND ENGINEER.
8. NEW CONSTRUCTION SHALL NOT IMPEED ON EXISTING PARKING OR PUBLIC FROM SAFELY AND EFFICIENTLY REACHING CUSTOMER SERVICE DESK.
9. CONTRACTOR TO LOCATE UTILITIES. ANYTHING SHOWN IS APPROXIMATE.
10. TREE LOCATION IS APPROXIMATE.
11. EXISTING SIGNS ARE TO REMAIN UNLESS NOTED IN DEMOLITION NOTES.

JOB NO.: 51118 DATE: May-2018 SCALE: N/A DRAWN: RNJ/JJR DESIGN: MTE CHECKED: MTE	PRELIMINARY NOT FOR CONSTRUCTION, BIDDING OR RECORDING	3600 S. LAS VEGAS BLVD LAS VEGAS, NV 89109	MTE	DRAWING NO. IP1 SHEET NO. 4 OF 8	MONTEZUMA CASTLE ARIZONA PARKING LOT ADDITION AND REDESIGN IMPROVEMENTS
---	--	---	-----	-------------------------------------	--

PLOTTED: May 10, 2018-12:27pm

FILE: \\VEGRSHARES\homes\NAU\m26\Documents\CENH\_486\CAD\IMPROVEMENTS.dwg <<C3D\_import.dwg>>



**DEMO**

101 CLEAR AND GRUB WITH IN PARKING LOT IMPROVEMENT  
102 REMOVE AND DISPOSE ASPHALT SAWCUT EX. ASPHALT WHERE NEW AC WILL MATCH TO.

**NEW CONSTRUCTION**

- 211 TYPE A ASPHALT PAVEMENT (4" AC/8" ABC) PER DETAIL 3.01, SHEET DT
- 212 TYPE A CONCRETE PAVEMENT (9" PCC/12" ABC) PER DETAIL 3.03, SHEET DT
- 213 TYPE A CONCRETE SIDEWALK (6" PCC/4" ABC) PER DETAIL 3.02, SHEET DT
- 214 TYPE A CURB AND GUTTER PER MAG STD. DET. 220-1.
- 215 LANDSCAPING PER EXISTING, GRADING PLAN (SHEET GD), LANDSCAPE ARCHITECT AND OWNER.
- 216 CROSSWALK PAVEMENT MARKING PER THE MUTCD.
- 217 4" THICK WHITE PAINTED PARKING LINE PER DETAIL 3.04, SHEET DT
- 222 MOTORCYCLE PARKING PER DETAIL 3.05, SHEET DT.
- 251 INSTALL SPEED LIMIT 15 MPH SIGN AND POST PER SIGN SCHEDULE ON SHEET GN.
- 252 INSTALL NO PARKING ANYTIME SIGN AND POST PER SIGN SCHEDULE ON SHEET GN.
- 253 INSTALL STOP SIGN AND POST PER SIGN SCHEDULE ON SHEET GN.
- 254 INSTALL NO RIGHT TURN BUS ONLY SIGN AND POST PER SIGN SCHEDULE ON SHEET GN.
- 255 INSTALL ADDITIONAL PARKING SIGN AND POST PER SIGN SCHEDULE ON SHEET GN.
- 256 INSTALL ONE-WAY (RIGHT) SIGN AND POST PER SIGN SCHEDULE ON SHEET GN.
- 257 INSTALL ONE-WAY (LEFT) SIGN AND POST PER SIGN SCHEDULE ON SHEET GN.
- 258 INSTALL RESERVED PARKING SYMBOL OF ACCESSIBILITY SIGN AND POST PER SIGN SCHEDULE ON SHEET GN.
- 259 INSTALL 15 MINUTE PARKING - LOADING & UNLOADING ZONE SIGN AND POST PER SIGN SCHEDULE ON SHEET GN.
- 260 INSTALL DO NOT ENTER SIGN AND POST PER SIGN SCHEDULE ON SHEET GN.
- 261 INSTALL RESTRICTED AREA - EMPLOYEE ONLY SIGN AND POST PER SIGN SCHEDULE ON SHEET GN.
- 262 INSTALL BUS AND RV PARKING ONLY SIGN AND POST PER SIGN SCHEDULE ON SHEET GN.
- 263 INSTALL MOTORCYCLE PARKING ONLY SIGN AND POST PER SIGN SCHEDULE ON SHEET GN.

**DRAINAGE**

- CHANNEL CONSTRUCTION NOTES ARE CALLED OUT ON SHEET GD. NO QUANTITIES TAKEN FROM THIS SHEET.

**NOTES**

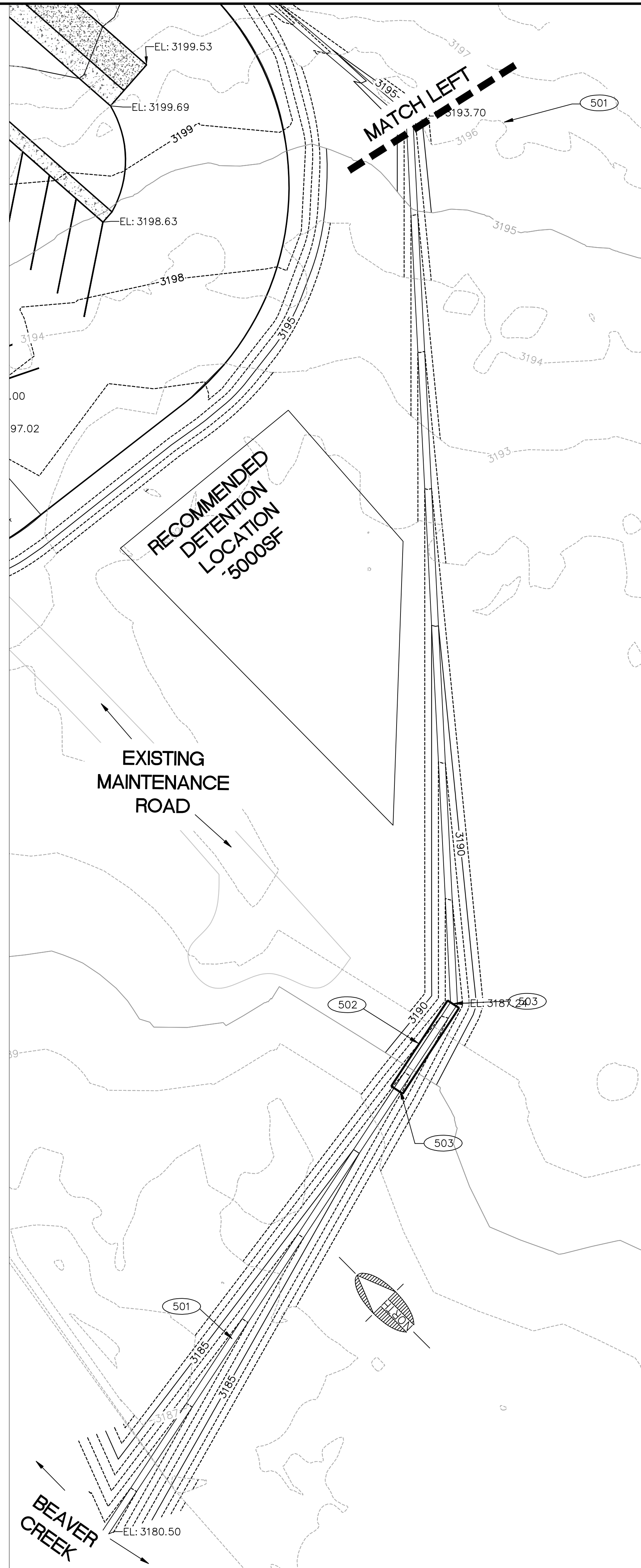
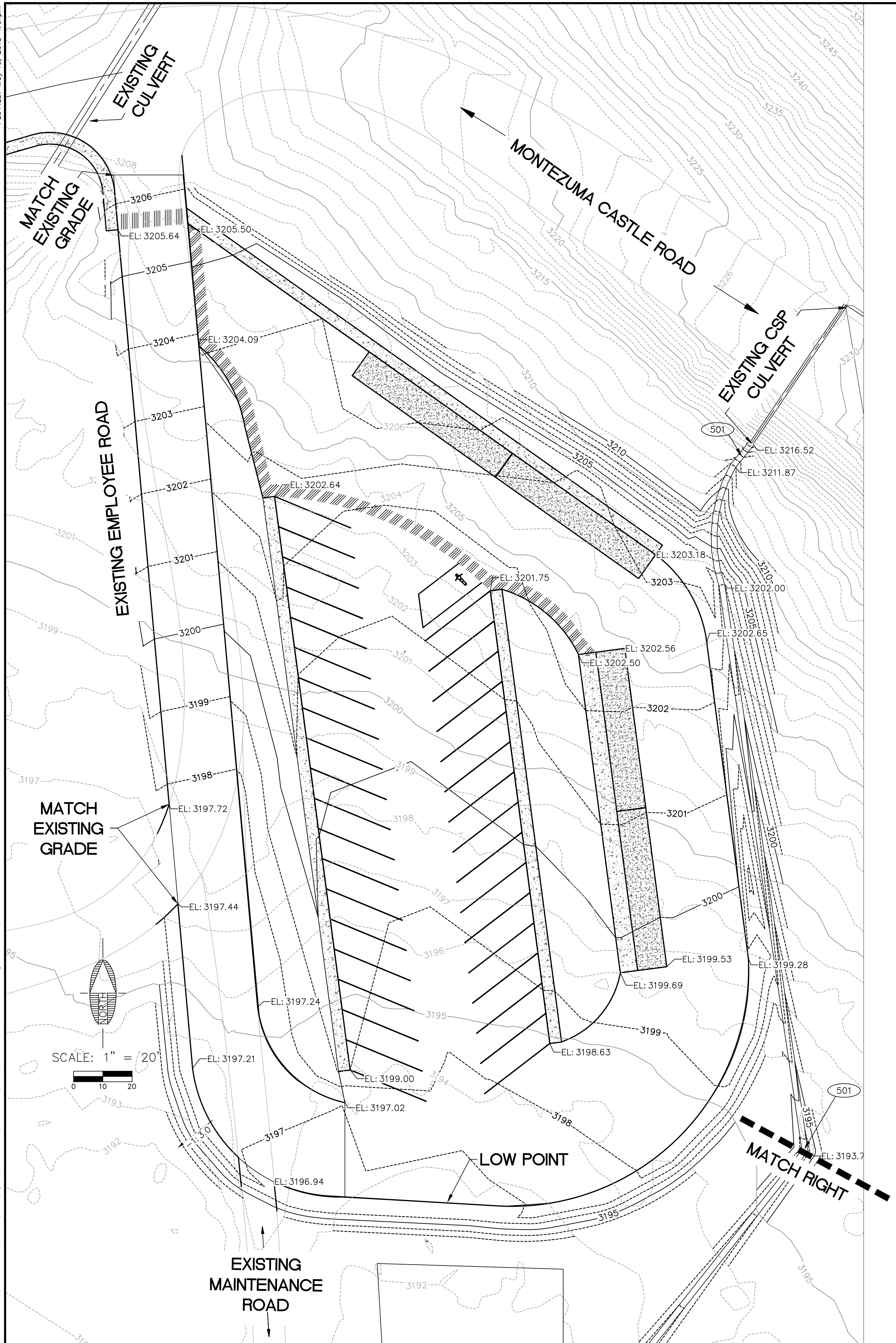
- LANDSCAPE AREA TO REMAIN EX. LANDSCAPE. DO NOT REMOVE WITHIN AREA. ALL TREES WITHIN AREA TO REMAIN UNLESS NOTED BY OWNER.
- PARKING STALLS TO BE INSTALLED PER DETAIL 3.04 SHT DT.
- ALL EXISTING SIDEWALK, CURB, GUTTER, CATCH BASINS, STORMWATER DRAINAGE TO REMAIN.
- NEW CONSTRUCTION SHALL NOT IMPEDE ON EXISTING PARKING OR PUBLIC FROM SAFELY AND EFFICIENTLY REACHING CUSTOMER SERVICE DESK.

\*\* EX. CONTOURS MAY NOT DEPICT ACTUAL CONDITIONS. \*\*

DRAWING NO. <b>IP2</b>	SHEET NO. OF 5 8
MONTEZUMA CASTLE ARIZONA	
PARKING LOT ADDITION AND REDESIGN	
<b>IMPROVEMENTS</b>	
JOB NO.: 51118	DATE: May-2018
SCALE: N/A	DRAWN: RN/JJR
DESIGN: MTE	CHECKED: MTE
<b>PRELIMINARY</b> NOT FOR CONSTRUCTION, BIDDING OR RECORDING	
3600 S. LAS VEGAS BLVD LAS VEGAS, NV 89109	
NO. DESCRIPTION	DATE

PLOTTED: May 10, 2018 - 11:01pm

FILE: \\VEGRSHARES\homes\NANU\m28\Documents\CENE 488\CAD\GRADING AND DRAINAGE.dwg <<C3D Imperial>>



**NEW CONSTRUCTION**

501 - CHANNEL TO BE CONSTRUCTED PER DETAIL 3.06 ON SHEET DT. HORIZONTAL CONTROL IS CALLED OUT ON SHEET HC.

502 - (2) 18" CORRUGATED HDPE (SMOOTH INTERIOR) STORMWATER PIPE TO BE INSTALLED AT 5% SLOPED TO THE SOUTHEAST PER TRENCH DETAIL 3.08 ON SHEET DT AND HORIZONTAL CONTROL ON SHEET HC.

503 - DOUBLE HEADWALL PER MAG STANDARD 501-2 ON BOTH SIDES OF STORMWATER PIPE. GRADE BOTTOM WIDTH OF CHANNEL TO ACCEPT (2) 18" HDPE INLETS. HEADWALLS TO BE AT MIN. 10' FROM EXISTING MAINTENANCE ROAD.

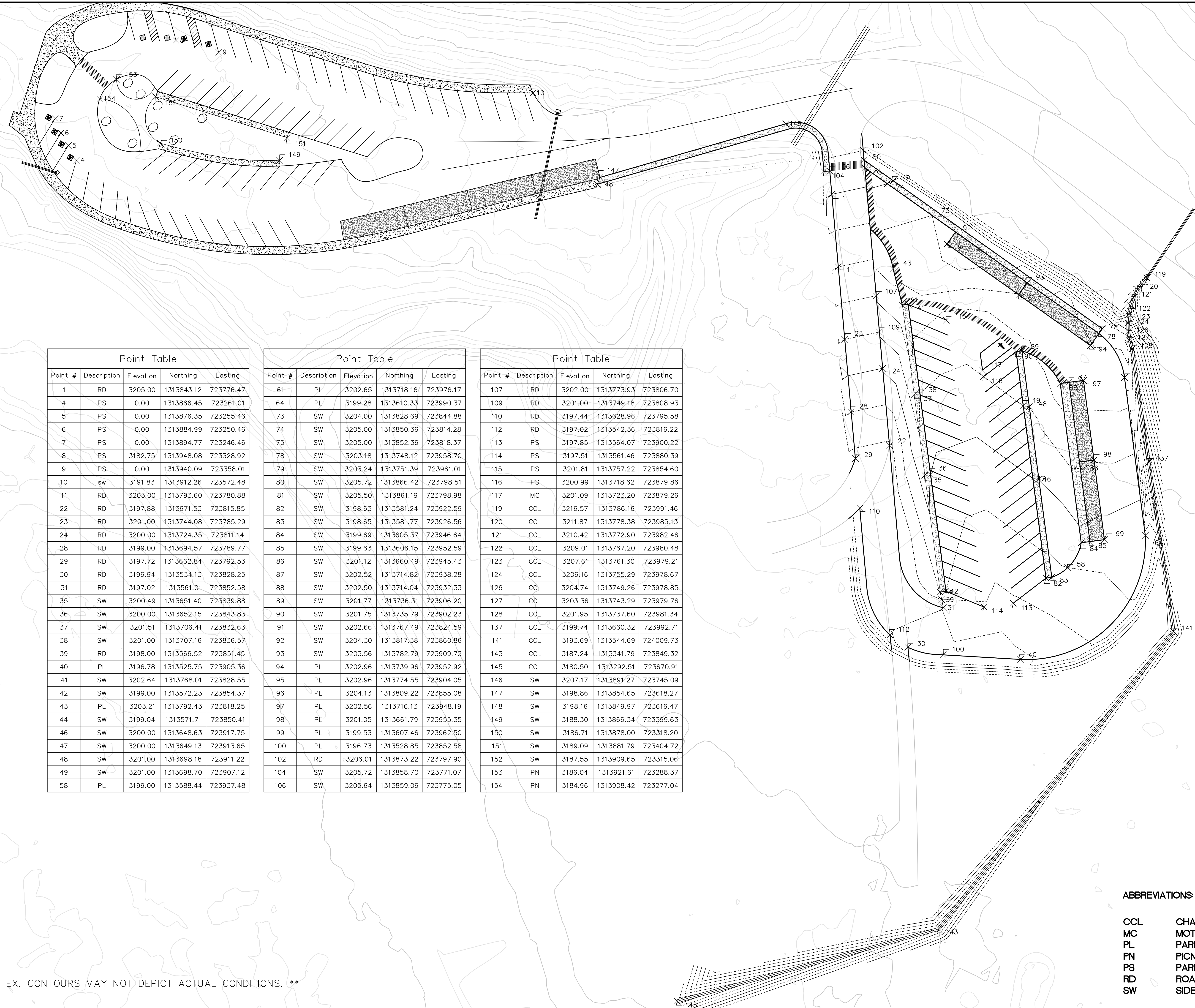
**NOTES:**

- NEW PARKING LOT TO BE GRADED WHERE LOWEST POINT IS THE SOUTHERN SIDE AND DRAIN INTO RECOMMENDED DETENTION BASIN PER HYDROLOGY AND HYDRAULICS REPORT PREPARED BY M.T.E.
- CONTRACTOR TO PROVIDE ALTERNATIVE ROUTE DURING CONSTRUCTION WHEN ROAD IS CLOSED IN CASE OF EMERGENCY.
- MAINTENANCE ROAD SURFACE TO BE REPLACED WITH SIMILAR OR NEW MATERIAL APPROVED BY THE OWNER/ENGINEER AND SURFACE WILL NOT CHANGE IN ALIGNMENT OR ELEVATION.
- EXISTING CSP CULVERT UNDER MONTEZUMA CASTLE ROAD TO REMAIN.
- TRENCH POSITION APPROXIMATE AND BASED ON ROAD ALIGNMENT OF EXISTING MAINTENANCE ROAD.

DRAWING NO. <b>GD</b>	SHEET NO. OF <b>6 8</b>	PROJECT MONTEZUMA CASTLE ARIZONA	JOB NO. 51118	DATE Feb-2018	SCALE N/A	DRAWN RNJ/JR	DESIGN MTE	CHECKED MTE
				PRELIMINARY NOT FOR CONSTRUCTION, BIDDING OR RECORDING				
NO. DESCRIPTION		DATE		BY				

PLOTTED: May 10, 2018-12:32pm

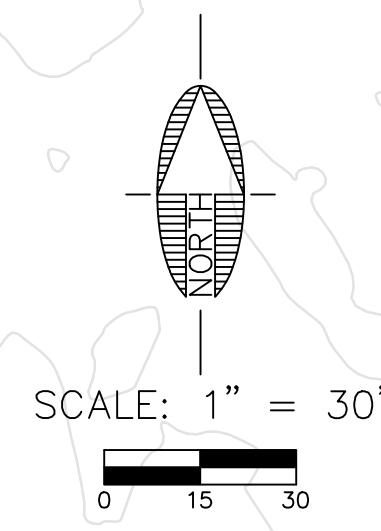
FILE: \\VEGSHARES\homes\NAU\m26\Documents\CENR\486\CAD\HORIZONTAL CONTROL.dwg <<c3d... Imperial>



Point #	Description	Elevation	Northing	Eastings
1	RD	3205.00	1313843.12	723776.47
4	PS	0.00	1313866.45	723261.01
5	PS	0.00	1313876.35	723255.46
6	PS	0.00	1313884.99	723250.46
7	PS	0.00	1313894.77	723246.46
8	PS	3182.75	1313948.08	723328.92
9	PS	0.00	1313940.09	723358.01
10	sw	3191.83	1313912.26	723572.48
11	RD	3203.00	1313793.60	723780.88
22	RD	3197.88	1313671.53	723815.85
23	RD	3201.00	1313744.08	723785.29
24	RD	3200.00	1313724.35	723811.14
28	RD	3199.00	1313694.57	723789.77
29	RD	3197.72	1313662.84	723792.53
30	RD	3196.94	1313534.13	723828.25
31	RD	3197.02	1313561.01	723852.58
35	SW	3200.49	1313651.40	723839.88
36	SW	3200.00	1313652.15	723843.83
37	SW	3201.51	1313706.41	723832.63
38	SW	3201.00	1313707.16	723836.57
39	RD	3198.00	1313566.52	723851.45
40	PL	3196.78	1313525.75	723905.36
41	SW	3202.64	1313768.01	723828.55
42	SW	3199.00	1313572.23	723854.37
43	PL	3203.21	1313792.43	723818.25
44	SW	3199.04	1313571.71	723850.41
46	SW	3200.00	1313648.63	723917.75
47	SW	3200.00	1313649.13	723913.65
48	SW	3201.00	1313698.18	723911.22
49	SW	3201.00	1313698.70	723907.12
58	PL	3199.00	1313588.44	723937.48

Point #	Description	Elevation	Northing	Eastings
61	PL	3202.65	1313718.16	723976.17
64	PL	3199.28	1313610.33	723990.37
73	SW	3204.00	1313828.69	723844.88
74	SW	3205.00	1313850.36	723814.28
75	SW	3205.00	1313852.36	723818.37
78	SW	3203.18	1313748.12	723958.70
79	SW	3203.24	1313751.39	723961.01
80	SW	3205.72	1313866.42	723798.51
81	SW	3205.50	1313861.19	723798.98
82	SW	3198.63	1313581.24	723922.59
83	SW	3198.65	1313581.77	723926.56
84	SW	3199.69	1313605.37	723946.64
85	SW	3199.63	1313606.15	723952.59
86	SW	3201.12	1313660.49	723945.43
87	SW	3202.52	1313714.82	723938.28
88	SW	3202.50	1313714.04	723932.33
89	SW	3201.77	1313736.31	723906.20
90	SW	3201.75	1313735.79	723902.23
91	SW	3202.66	1313767.49	723824.59
92	SW	3204.30	1313817.38	723860.86
93	SW	3203.56	1313782.79	723909.73
94	PL	3202.96	1313739.96	723952.92
95	PL	3202.96	1313774.55	723904.05
96	PL	3204.13	1313809.22	723855.08
97	PL	3202.56	1313716.13	723948.19
98	PL	3201.05	1313661.79	723955.35
99	PL	3199.53	1313607.46	723962.50
100	PL	3196.73	1313528.85	723852.58
102	RD	3206.01	1313873.22	723797.90
104	SW	3205.72	1313858.70	723771.07
106	SW	3205.64	1313859.06	723775.05

Point #	Description	Elevation	Northing	Eastings
107	RD	3202.00	1313773.93	723806.70
109	RD	3201.00	1313749.18	723808.93
110	RD	3197.44	1313628.96	723795.58
112	RD	3197.02	1313542.36	723816.22
113	PS	3197.85	1313564.07	723900.22
114	PS	3197.51	1313561.46	723880.39
115	PS	3201.81	1313757.22	723854.60
116	PS	3200.99	1313718.62	723879.86
117	MC	3201.09	1313723.20	723879.26
119	CCL	3216.57	1313786.16	723991.46
120	CCL	3211.87	1313778.38	723985.13
121	CCL	3210.42	1313772.90	723982.46
122	CCL	3209.01	1313767.20	723980.48
123	CCL	3207.61	1313761.30	723979.21
124	CCL	3206.16	1313755.29	723978.67
126	CCL	3204.74	1313749.26	723978.85
127	CCL	3203.36	1313743.29	723979.76
128	CCL	3201.95	1313737.60	723981.34
137	CCL	3199.74	1313660.32	723992.71
141	CCL	3193.69	1313544.69	724009.73
143	CCL	3187.24	1313341.79	723849.32
145	CCL	3180.50	1313292.51	723670.91
146	SW	3207.17	1313891.27	723745.09
147	SW	3198.86	1313854.65	723618.27
148	SW	3198.16	1313849.97	723616.47
149	SW	3188.30	1313866.34	723399.63
150	SW	3186.71	1313878.00	723318.20
151	SW	3189.09	1313881.79	723404.72
152	SW	3187.55	1313909.65	723315.06
153	PN	3186.04	1313921.61	723288.37
154	PN	3184.96	1313908.42	723277.04

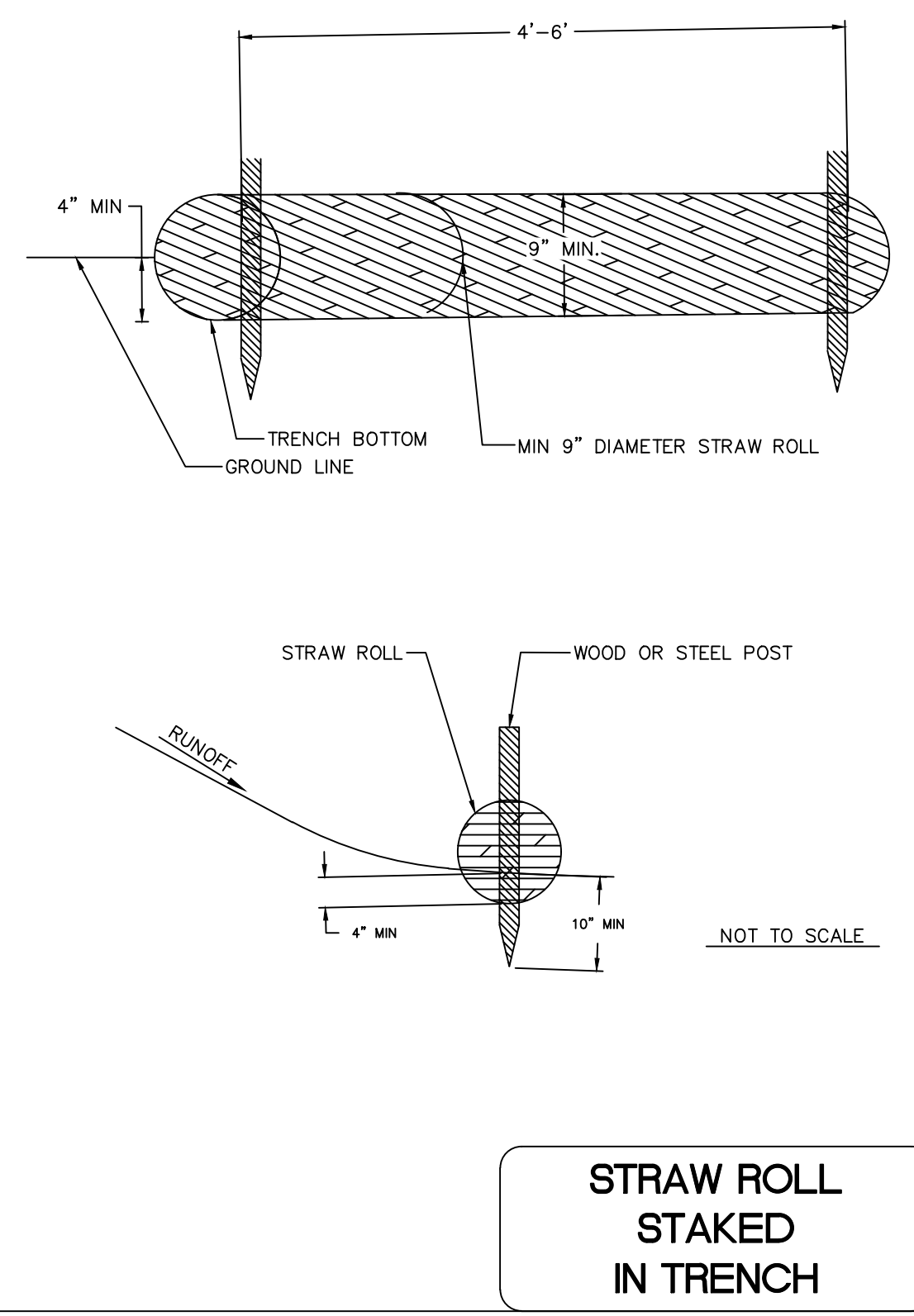
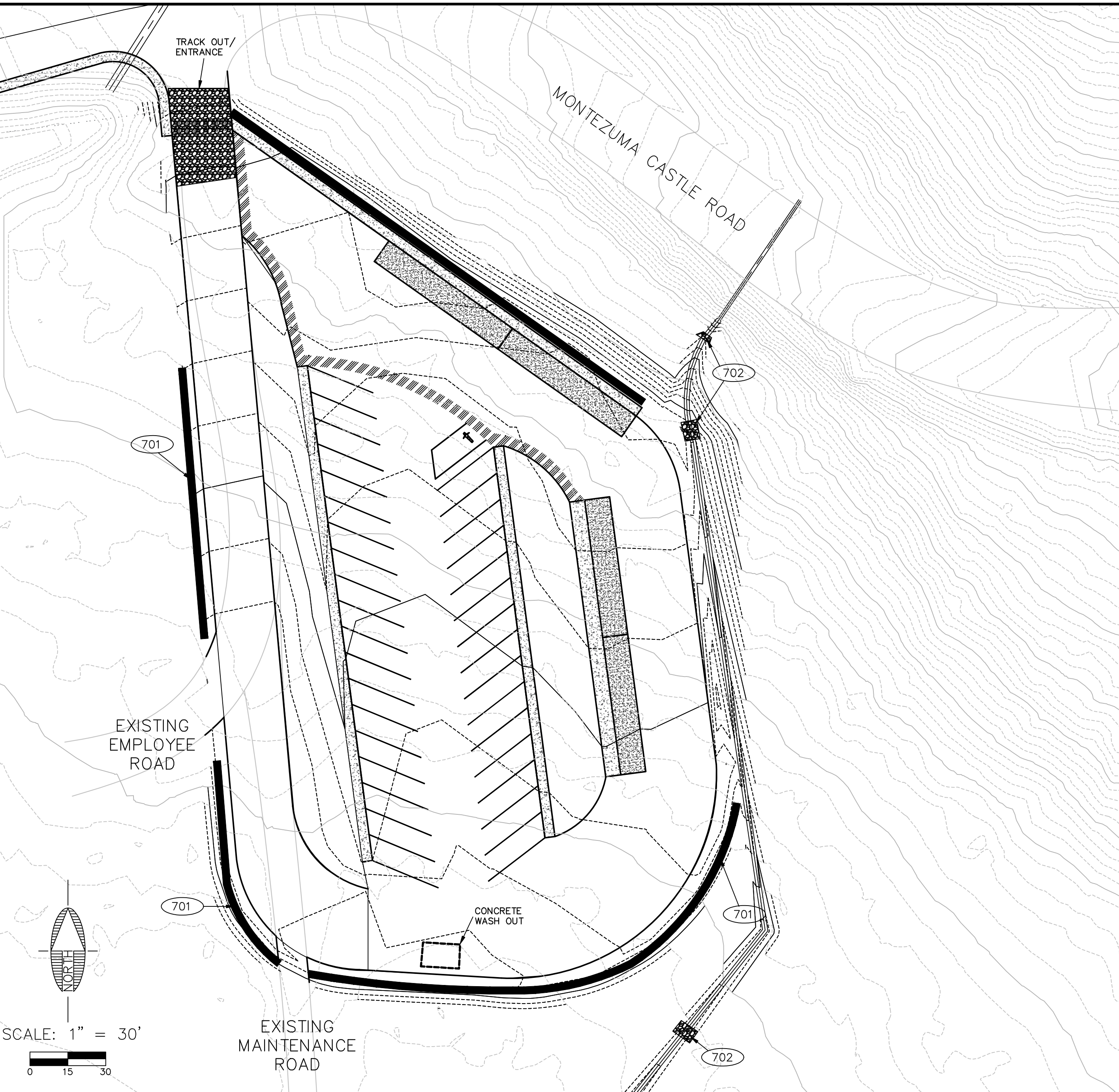


\*\* EX. CONTOURS MAY NOT DEPICT ACTUAL CONDITIONS. \*\*

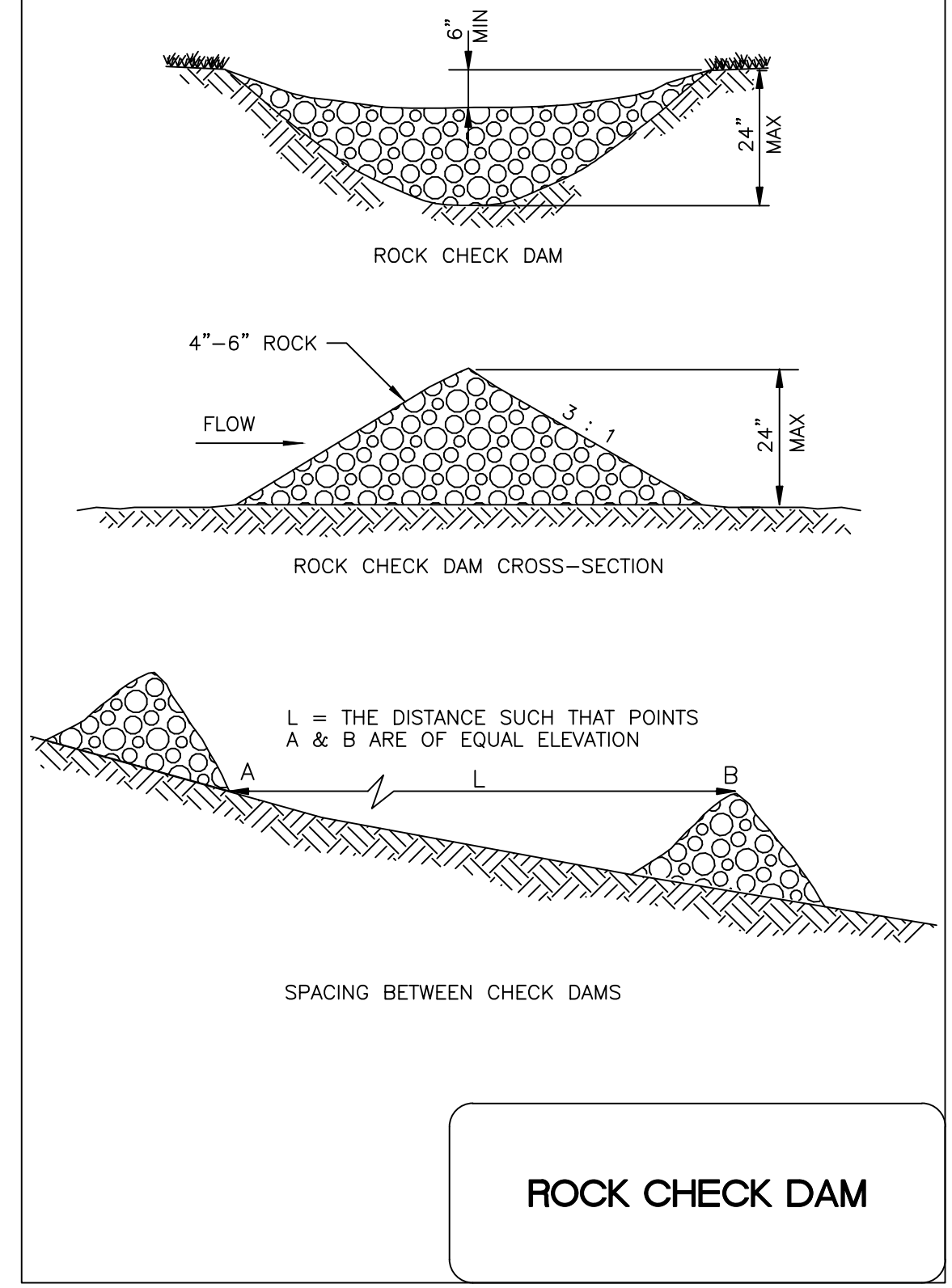
- ABBREVIATIONS:
- CCL CHANNEL CENTERLINE
  - MC MOTORCYCLE
  - PL PARKING LOT
  - PN PICNIC
  - PS PARKING STALL
  - RD ROAD
  - SW SIDEWALK

DRAWING NO. <b>HC</b>	MONTEZUMA CASTLE ARIZONA	PARKING LOT ADDITION AND REDESIGN	HORIZONTAL CONTROL	JOB NO.: 51118 DATE: Feb-2018 SCALE: N/A DRAWN: RN/JJR DESIGN: MTE CHECKED: MTE	<b>PRELIMINARY</b> NOT FOR CONSTRUCTION, BIDDING OR RECORDING	3600 S. LAS VEGAS BLVD LAS VEGAS, NV 89109		NO. DESCRIPTION DATE BY	7 OF 8
--------------------------	-----------------------------	-----------------------------------	--------------------	--	---	---	--	----------------------------	--------

PLOTTED: May 10, 2018-12:58pm



**STRAW ROLL STAKED IN TRENCH**



**ROCK CHECK DAM**

**SWPPP CONSTRUCTION NOTES**

701 – INSTALL STRAW WATTLES PER DETAIL OF THIS SHEET

702 – INSTALL ROCK CHECK DAMS PER DETAIL ON THIS SHEET

**EROSION & SEDIMENT CONTROL STANDARD NOTES**

1. THE CONTRACTOR MUST NOTIFY BLUE STAKE AT 1-800-STAKE-IT AT LEAST 24 HOURS PRIOR TO THE START OF CONSTRUCTION IN ACCORDANCE WITH APPLICABLE COUNTY ORDINANCES AND POLICIES.
2. ALL EROSION CONTROL MEASURES SHOWN ON THE APPROVED PLAN MUST BE IN PLACE AND INSPECTED AND APPROVED BY THE PRIOR TO CLEARING, STRIPPING OF TOPSOIL OR GRADING.
3. THE CONTRACTOR SHALL POST A SIGN AT THE MAIN ENTRANCE TO THE CONSTRUCTION SITE CONTAINING THE AZPDES AUTHORIZATION NUMBER AND/OR COPY OF NOTICE OF INTENT AUTHORIZATION, CONSTRUCTION SITE OPERATOR CONTACT NAME AND TELEPHONE NUMBER, A BRIEF PROJECT DESCRIPTION, AND THE LOCATION OF THE APPROVED STORM WATER POLLUTION PREVENTION PLAN. THE SIGN SHALL ALSO DISPLAY THE NAME, CONTACT INFORMATION, AND QUALIFICATIONS OF THE PERSONNEL PERFORMING ROUTINE INSPECTIONS.
4. THE CONTRACTOR'S REPRESENTATIVE IS RESPONSIBLE FOR THE INSTALLATION OF ANY ADDITIONAL EROSION CONTROL MEASURES NECESSARY TO PREVENT EROSION AND SEDIMENTATION.
5. ALL DISTURBED AREAS ARE TO DRAIN TO APPROVED SEDIMENT CONTROL MEASURES AT ALL TIMES DURING LAND DISTURBING ACTIVITIES AND DURING SITE DEVELOPMENT UNTIL COMPLETE AND ADEQUATE STABILIZATION IS ACHIEVED.
6. WATER MUST BE PUMPED INTO AN APPROVED FILTERING DEVICE DURING DEWATERING OPERATIONS.
7. THE CONTRACTOR'S REPRESENTATIVE SHALL INSPECT AND DOCUMENT ALL EROSION AND SEDIMENT CONTROL MEASURES DAILY AND AFTER EACH SIGNIFICANT RAINFALL. THE FOLLOWING ITEMS WILL BE CHECKED IN PARTICULAR:
  - A. GRAVEL OUTLETS WILL BE CHECKED REGULARLY FOR SEDIMENT BUILDUP WHICH WILL PREVENT DRAINAGE. IF THE GRAVEL IS CLOGGED BY SEDIMENT, IT SHALL BE REMOVED AND CLEANED OR REPLACED.
  - B. SILT FENCE AND SEDIMENT BARRIERS WILL BE CHECKED REGULARLY FOR UNDERMINING OR DETERIORATION OF THE FABRIC. SEDIMENT SHALL BE REMOVED WHEN THE LEVEL OF SEDIMENT DEPOSITION REACHES HALF WAY TO THE TOP OF THE BARRIER.
  - C. SEEDED AND SODDED AREAS WILL BE CHECKED REGULARLY TO ENSURE THAT A GOOD STAND IS MAINTAINED. AREAS SHOULD BE FERTILIZED AND RESEDED OR SODDED AS NEEDED.
8. INSPECTION FORMS SHALL BE COMPLETED BY THE CONTRACTOR'S INSPECTOR WITH THE MINIMUM FOLLOWING INFORMATION: INSPECTION DATE, FILE AND QUALIFICATIONS OF EACH INSPECTOR, WEATHER INFORMATION FOR PERIOD SINCE LAST INSPECTION, LOCATION OF DISCHARGE OF SEDIMENT OR OTHER POLLUTANTS, LIST OF BMPs THAT NEED TO BE MAINTAINED OR INADEQUATE, LIST ADDITIONAL NEEDED BMPs, CORRECTIVE ACTION REQUIRED, SOURCES OF ALL NON-STORMWATER AND CONTROL MEASURES, DATES WHEN MAJOR GRADING ACTIONS OCCURRED, POLLUTANT DISCHARGE STATUS OF STORAGE AREAS, AND DATES WHEN CONSTRUCTION ACTIVITIES CEASED.
9. CONTRACTOR IS RESPONSIBLE FOR MAINTAINING INSPECTION RECORDS FOR AT LEAST THREE (3) YEARS FOLLOWING THE COMPLETION OF PROJECT.
10. THE SWPPP SHALL BE MODIFIED BY THE CONTRACTOR WITHIN 7 CALENDAR DAYS FOLLOWING THE INSPECTION OF AN INADEQUATE BMP WHEN NEEDED. BMPs SHALL BE MODIFIED OR ADDED AS SOON AS PRACTICABLE AFTER THE BMP HAS BEEN DETERMINED INADEQUATE.
11. PERMANENT SOIL STABILIZATION SHALL BE APPLIED TO DENUDED AREAS WITHIN SEVEN (7) DAYS AFTER FINAL GRADE IS REACHED AND ALL WORK COMPLETED ON ANY PORTION OF THE SITE. TEMPORARY SOIL STABILIZATION SHALL BE APPLIED WITHIN SEVEN (7) DAYS TO DENUDED AREAS THAT MAY NOT BE AT FINAL GRADE BUT WILL REMAIN UNDISTURBED FOR LONGER THAN FOURTEEN (14) DAYS. ROADS AND PARKING AREAS SHALL BE STABILIZED AS SOON AS PRECIPITATION OR IRRIGATION IS AVAILABLE.
12. ALL TEMPORARY EROSION AND SEDIMENT CONTROL MEASURES WILL BE REMOVED WITHIN 30 DAYS AFTER ADEQUATE SITE STABILIZATION AND AFTER THE TEMPORARY MEASURES ARE NO LONGER NEEDED, AS AUTHORIZED BY THE INSPECTORS. TRAPPED SEDIMENT AND THE DISTURBED SOIL AREAS RESULTING FROM THE DISPOSITION OF TEMPORARY MEASURES WILL BE PERMANENTLY STABILIZED TO PREVENT FURTHER EROSION AND SEDIMENTATION.
13. WHEN SEDIMENT IS TRANSPORTED ONTO A PAVED ROAD SURFACE, THE ROAD WILL BE CLEANED THOROUGHLY AT THE END OF EACH DAY. SEDIMENT WILL BE REMOVED FROM THE ROADS BY SHOULDERING, SWEEPING AND TRANSPORTED TO A SEDIMENT CONTROL DISPOSAL AREA. STREET WASHING WILL BE ALLOWED ONLY AFTER SEDIMENT IS REMOVED IN THIS MANNER.
14. AREAS WHICH ARE NOT TO BE DISTURBED WILL BE CLEARLY MARKED BY FLAGS, SIGNS, ETC.
15. FLOOD PLAIN LIMITS SHALL BE CLEARLY MARKED IN THE FIELD BY FLAGS, SIGNS, ETC.
16. TREE SAVE AREAS SHALL BE CLEARLY MARKED IN THE FIELD BY ORANGE SAFETY FENCE.
17. ORANGE SAFETY FENCE MUST BE INSTALLED AROUND ALL SILT TRAPS AND SEDIMENT BASINS.
18. SEEDING AND MULCHING SHALL BE IN ACCORDANCE WITH THE STANDARDS.
19. THE SWPPP SHALL BE MODIFIED BY THE CONTRACTOR WITHIN 15 BUSINESS DAYS FOLLOWING ANY CHANGE IN DESIGN, CONSTRUCTION OPERATION, OR MAINTENANCE THAT HAS A SIGNIFICANT EFFECT ON DISCHARGE OR NOT PREVIOUSLY ASSESSED IN THE SWPPP.
20. THE SWPPP SHALL BE MODIFIED BY THE CONTRACTOR WITHIN 15 BUSINESS DAYS IF IT IS DETERMINED THAT DISCHARGE IS CAUSING OR CONTRIBUTING TO WATER QUALITY EXCEEDENCES OR THE SWPPP IS INEFFECTIVE.

**EROSION CONTROL MEASURES**

ALL VEGETATIVE AND STRUCTURAL EROSION AND SEDIMENT CONTROL PRACTICES SHALL BE CONSTRUCTED AND MAINTAINED ACCORDING TO MINIMUM STANDARDS AND SPECIFICATIONS ESTABLISHED HEREIN.

**STRUCTURAL PRACTICES**

1. SILT FENCE BARRIER: SILT FENCE SEDIMENT BARRIERS WILL BE INSTALLED DOWNSLOPE OF AREAS WITH MINIMAL GRADES TO FILTER SEDIMENT LADEN RUNOFF FROM SHEET FLOW AS INDICATED ON THE PLANS.
2. A TEMPORARY CONSTRUCTION ENTRANCE SHALL BE INSTALLED WHERE THE ACCESS AREA INTERSECTS WITH EXISTING ROADS DURING MUDDY CONDITIONS. DRIVERS OF CONSTRUCTION VEHICLES WILL BE REQUIRED TO WASH THEIR WHEELS BEFORE ENTERING THE HIGHWAY.
3. STORM DRAIN INLET & SPILLWAY PROTECTION: ALL STORM SEWER INLETS AND SPILLWAYS SHALL BE PROTECTED DURING CONSTRUCTION. SEDIMENT-LADEN WATER SHALL BE FILTERED BEFORE ENTERING THE STORM SEWER INLETS AND CULVERTS.

**VEGETATIVE PRACTICES**

1. TOP SOILING (STOCKPILE) TOPSOIL WILL BE STRIPPED FROM AREAS TO BE GRADED AND STOCKPILED FOR LATER USE. STOCKPILE LOCATIONS ARE TO BE STABILIZED WITH TEMPORARY VEGETATION. PRIOR TO LAND DISTURBING ACTIVITIES, THE CONTRACTOR SHALL SUBMIT A SUPPLEMENTARY EROSION & SEDIMENT PLAN TO THE OWNER COVERING THE STOCKPILE AREA WHICH MAY HAVE TO BE APPROVED BY THE PLAN APPROVING AUTHORITY BEFORE ANY ACTIVITY COMMENCES.
2. TEMPORARY SEEDING ALL DENUDED AREAS WHICH WILL BE LEFT DORMANT FOR EXTENDED PERIODS OF TIME SHALL BE SEEDING WITH FAST GERMINATING TEMPORARY VEGETATION IMMEDIATELY FOLLOWING GRADING. SELECTION OF THE SEED MIXTURE WILL DEPEND ON THE TIME OF YEAR IT IS APPLIED.
3. GRASS AREAS THAT ARE DISTURBED DURING CONSTRUCTION SHALL BE REPLACED WITH SOD BY THE CONTRACTOR. THE SOD GRASS TYPE SHALL MATCH THE EXISTING AND SHALL BE MAINTAINED BY THE CONTRACTOR UNTIL THE SOD IS STABILIZED.

**Construction Sequence**

1. INSTALL INLET PROTECTION
2. PAVEMENT REMOVAL AND INSTALL HAY BALES
3. INSTALL CONSTRUCTION ENTRANCE
4. DRAINAGE INFRASTRUCTURE/UTILITIES
5. SITE CONSTRUCTION
6. PERMANENT REVEGETATION/SLOPE STABILIZATION
7. SCHEDULED MONITORING AND MAINTENANCE

**GENERAL NOTES FOR EROSION CONTROL**

1. A STANDBY CREW FOR EMERGENCY WORK SHALL BE AVAILABLE AT ALL TIMES DURING THE RAINY SEASON. NECESSARY MATERIALS SHALL BE AVAILABLE ON SITE AND STOCKPILED AT CONVENIENT LOCATIONS TO FACILITATE RAPID CONSTRUCTION OF TEMPORARY DEVICES OR TO REPAIR ANY DAMAGED EROSION CONTROL MEASURES, ESPECIALLY WHEN RAIN IS IMMINENT.
2. DEVICES SHALL NOT BE MOVED OR MODIFIED WITHOUT APPROVAL OF THE INSPECTOR.
3. ALL PROTECTIVE DEVICES SHOWN SHALL BE IN PLACE AT THE END OF EACH DAY.
4. AFTER A RAIN STORM, ALL SILT AND DEBRIS SHALL BE REMOVED FROM CHECK BERMS AND DESILTING BASINS. ANY GRADED SLOPE SURFACE PROTECTION MEASURE DAMAGED DURING A RAIN STORM SHALL BE IMMEDIATELY REPAIRED.
5. FILL SLOPES AT THE CONSTRUCTION SITE PERIMETER MUST DRAIN AWAY FROM THE TOPS OF THE SLOPES AT THE END OF EACH DAY.
6. A COPY OF THE PROJECTS STORM WATER POLLUTION PROTECTION PLAN (SWPPP) SHALL BE MAINTAINED AT THE CONSTRUCTION SITE AND ALWAYS AVAILABLE FOR REVIEW.
7. PROTECT ALL STORM DRAINAGE STRUCTURES FROM SEDIMENT CLOGGING BY PROVIDING INLET PROTECTION AT ALL OPENINGS.
8. AVOID PAVING DURING WET WEATHER.
9. STORE MATERIALS AWAY FROM DRAINAGE COURSES TO PREVENT CONTACT WITH STORM WATER.
10. PLACE DRIP PANS OR ABSORBENT MATERIALS UNDER CONSTRUCTION EQUIPMENT WHEN NOT IN USE.
11. CLEAN UP SPILLS WITH ABSORBENT MATERIALS.
12. OLD ASPHALT MUST BE DISPOSED OF PROPERLY.
13. KEEP WORK SITE CLEAN AND ORDERLY DAILY.
14. PROPERLY STORE PAINTS AND SOLVENTS.
15. PERMANENTLY MARK STORM DRAIN STRUCTURES IN A MANNER APPROVED BY THE CONSTRUCTION INSPECTOR TO MINIMIZE INADVERTENT DISPOSAL OF RESIDUAL PAINTS, SOLVENTS, OR ANY OTHER POLLUTANT.
16. ALLOW MATERIAL DELIVERY AND STORAGE ONLY IN DESIGNATED AREAS AND AVOID TRANSPORT NEAR DRAINAGE PATHS AND WATERWAYS.
17. MINIMIZE THE USE OF HAZARDOUS MATERIALS ON SITE.
18. CLEAN UP LEAKS AND SPILLS IMMEDIATELY.
19. USE WATERTIGHT DUMPSTERS FOR TRASH AND CONSTRUCTION WASTE.
20. COLLECT SITE TRASH AS NEEDED, ESPECIALLY DURING RAINY OR WINDY CONDITIONS.
21. ARRANGE FOR REGULAR WASTE COLLECTION BEFORE CONTAINERS OVERFLOW.
22. DO NOT ALLOW BRUSHES OR PAINT CONTAINERS TO BE CLEANED OUT IN THE DIRT, STREET, GUTTER, OR STORM DRAINS.
23. STORE AND COVER DRY AND WET MATERIALS FROM CONCRETE PLACEMENT AWAY FROM DRAINAGE AREAS.
24. PERFORM WASHOUT OF CONCRETE TRUCKS IN DESIGNATED AREAS ONLY. WASHOUT AREAS SHALL BE AWAY FROM STORM DRAINS, OPEN DITCHES, OR STREETS.
25. TEMPORARY SANITARY FACILITIES SHALL BE MAINTAINED IN GOOD WORKING ORDER BY A LICENSED SERVICE.
26. CONTRACTOR SHALL BE RESPONSIBLE FOR UPDATING HIS PLAN THROUGHOUT CONSTRUCTION AND INDICATE ANY AND ALL REVISIONS / UPDATES ON THIS PLAN.
27. CONTRACTOR SHALL CONDUCT HIS OPERATIONS IN SUCH A MANNER THAT STORM WATER WILL BE CONTAINED WITHIN THE PROJECT OR CHANNLED INTO THE STORM DRAIN SYSTEM PROVIDED THAT IT IS FREE FROM POLLUTANTS AND DEBRIS.
28. CITY APPROVAL OF PLANS DOES NOT RELIEVE THE DEVELOPER FROM CORRECTING ERRORS OR OMISSIONS DISCOVERED DURING CONSTRUCTION. CONFORMANCE WITH THE REQUIREMENTS OF THIS PLAN SHALL IN NO WAY RELIEVE THE DEVELOPER FROM HIS RESPONSIBILITIES TO THE SITE AND ADJACENT PROPERTIES. TEMPORARY EROSION CONTROL SHALL CONSIST OF, BUT NOT BE LIMITED TO, CONSTRUCTING SUCH FACILITIES AND TAKING SUCH MEASURES AS ARE NECESSARY TO PREVENT, CONTROL AND ABATE WATER, MUD AND EROSION DAMAGE TO PUBLIC AND PRIVATE PROPERTY AS A RESULT OF THE CONSTRUCTION OF THIS PROPERTY.
29. CLEARING AND GRUBBING SHOULD BE LIMITED TO AREAS THAT WILL RECEIVE IMMEDIATE GRADING. EROSION CONTROL MEASURES WILL BE REQUIRED TO PROTECT AREAS WHICH HAVE BEEN CLEARED AND GRUBBED. THESE MEASURES MAY INCLUDE BUT NOT BE LIMITED TO: GRADED DITCHES, SAND OR GRAVEL BAGS, BARRIERS AND SILT FENCING. CARE SHALL BE EXERCISED TO PRESERVE VEGETATION BEYOND LIMITS OF GRADING AND PREVENT SEDIMENT DISCHARGE WHILE CONSTRUCTION IN THIS AREA IS ACTIVE.
30. SEDIMENT CONTROL SHALL BE USED AT THE TOE OF ANY ERODIBLE SLOPE.
31. CONTRACTOR SHALL IMMEDIATELY RESTORE ANY DAMAGED EROSION CONTROL MEASURE WITHIN THE PROJECT BOUNDARY.
32. FACES OF FINISHED CUT AND FILL SLOPES SHALL BE PREPARED AND MAINTAINED TO CONTROL AGAINST EROSION. THESE PERMANENT CONTROL MEASURES MAY CONSIST OF ADEQUATE SEEDING, PLANTING AND JUTE MATTING. THE PROTECTION FOR THE SLOPES SHALL BE INSTALLED AS SOON AS PRACTICABLE AND PRIOR TO CALLING FOR FINAL APPROVAL.
33. AFTER A RAIN STORM, ALL SILT AND DEBRIS SHALL BE REMOVED FROM STREETS, CHECK BERMS AND BASINS.
34. CONTRACTOR / SUBCONTRACTOR TRAINING IN SEDIMENT AND EROSION CONTROL IN ACCORDANCE WITH AZPDES.
35. THE PERMITTEE AND CONTRACTOR SHALL BE RESPONSIBLE, AND TAKE NECESSARY PRECAUTIONS, TO PREVENT PUBLIC TRESPASS ONTO AREAS WHERE IMPOUNDED WATER CREATES A HAZARDOUS CONDITION.

**GENERAL NOTES**

1. ALL CONSTRUCTION SHALL CONFORM TO MAG STANDARDS, AZPDES STANDARDS AND SPECIFICATIONS AND GENERALLY ACCEPTED CONSTRUCTION PRACTICE.
  2. THESE PLANS REPRESENT A REASONABLE EFFORT TO IMPLEMENT THE MOST CURRENT BEST MANAGEMENT PRACTICES (BMPs) IN MITIGATING STORM WATER POLLUTION DURING CONSTRUCTION. THE EFFECTIVENESS OF THE MITIGATION MEASURES DEPICTED IN THESE PLANS DEPEND IN PART ON PROPER INSTALLATION, IMPLEMENTATION, MAINTENANCE, AND REPAIR OF THE DEVICES SELECTED.
- MAINTENANCE:  
IN GENERAL, ALL EROSION & SEDIMENT CONTROL MEASURES WILL BE CHECKED DAILY AND AFTER EACH SIGNIFICANT RAINFALL. REFER TO THE ATTACHED EROSION & SEDIMENT CONTROL STANDARD NOTES FOR DETAILED MAINTENANCE AND REVEGETATION / STABILIZATION REQUIREMENTS.

FILE: D:\CAD\X-SWPPP.dwg <<CCID:imperial>>

DRAWING NO.	SWP	SHEET NO. OF	8
	MONTEZUMA CASTLE ARIZONA		8
PARKING LOT ADDITION AND REDESIGN			
SWPPP			
JOB NO.	5111B	DATE	Feb-2018
SCALE	N/A	DRAWN	RN/JJR
DESIGN	MTE	CHECKED	MTE
PRELIMINARY NOT FOR CONSTRUCTION, BIDDING OR RECORDING			
3600 S. LAS VEGAS BLVD LAS VEGAS, NV 89109			
NO.	DESCRIPTION	DATE	BY